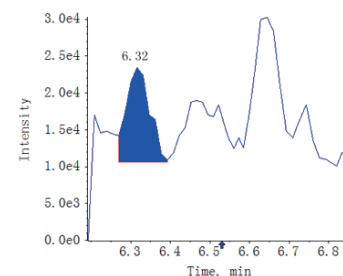
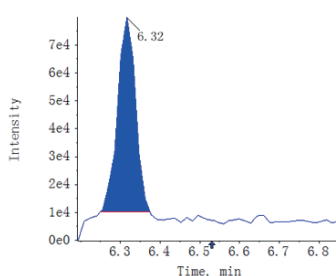
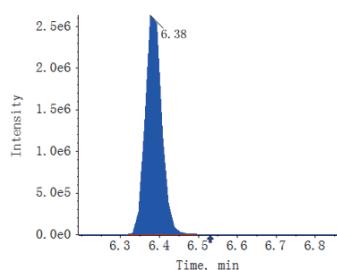
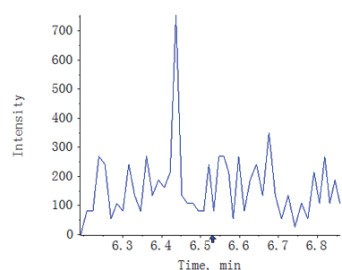


Plant Hormone Analysis



Plant hormones are highly dynamic chemical messengers that play essential roles in the regulation of plant physiological processes. Therefore, analysis and monitoring of plant hormones forms a valuable tool in plant performance improvement and new crop trait development.

Lifasible provides mass spectrometry-based approaches that ensure continuous and accurate detections of plant hormones. Mass spectrometry-based methods are highly sensitive approaches that allow accurate identification and quantification of plant hormones.



Package	Classification	Substance
Hormone Family Bucket	Auxin	IAA, ME-IAA, IBA, ICA, ICAld, IPA, IAA-Glc, IAA-Glu, IAN, IAA-Leu-Me, IAA-Leu, IAA-Phe, IAA-Gly, OxIAA, IAA-Val, IAM, TRA, ILA, IA, TRP, etc.
	CK	IP, tZ, cZ, DZ, IPR, tZR, cZR, DHZ7G, DHZR, iP9G, iP7G, cZ9G, BAP, tZOG, mT, pT9G, pT, mTR, BAPR, K, KR, pTR, mT9G, BAP7G, K9G, 2MeSiP, etc.
	JA	MEJA, JA, H2JA, JA-ILE, OPDA, JAPhe, JA-Val, OPC-4, OPC-6
	Others	SA, SAG, ABA, ABA-GE, ACC, ST, 5DS, etc.
Gibberellin Family	GA (18)	GA1, GA3, GA4, GA5, GA6, GA7, GA8, GA9, GA12, GA15, GA19, GA20, GA24, GA29, GA34, GA44, GA51, GA53
Brassinosteroid Family	BR	BL, 24-epiBL, 28-norBL, 28-homoBL, CS, 6-deoxoCS, 28-norCS, 28-homoCS, 6-deoxo-24-epiCS, TY, 28-norTE
Melatonin	Melatonin	Melatonine

We also offer phytohormone-targeted metabolomics services for 108 compounds. Feel free to contact us for more information on cooperation.

Phone: 1-631-356-5138

Fax: 1-631-910-2166

Email: info@lifasible.com

Address: SUITE 209, 17 Ramsey Road,

Shirley, NY 11967

