

**KRISHGEN BioSystems**

OUR REAGENTS, YOUR RESEARCH

# ANTIBODY-DRUG CONJUGATE ELISA

FOR SENSITIVE, VALIDATED RESULTS THAT  
SUPPORT REGULATORY REQUIREMENTS

**FOR  
PHARMACOKINETICS  
AND MONITORING  
ADC THERAPIES**

Krishgen's range of KRIBIOLSA Antibody Drug Conjugates (ADCs) ELISA kits are meticulously designed to facilitate precise and sensitive detection and quantification of ADCs – a groundbreaking class of therapeutic agents at the forefront of targeted cancer therapy.

Learn more about our products:

[www.krishgen.biz](http://www.krishgen.biz)

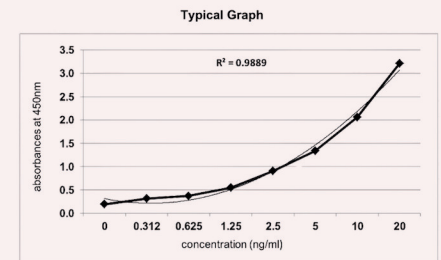
[kbiinfo@krishgen.com](mailto:kbiinfo@krishgen.com)



With an increasing number of ADC-based therapies advancing through clinical trials, robust and reliable assays are indispensable for assessing the pharmacokinetics and pharmacodynamics of these innovative drugs. Our ELISA kits serve as a critical tool for monitoring ADC concentrations in patient samples, evaluating drug exposure, and elucidating the correlation between ADC levels and clinical outcomes. Antibody Drug Conjugates also need meticulous investigation into the biodistribution, internalization, and release kinetics, mechanism of action and optimizing therapeutic potential.

Krishgen's highly specific assays are developed for pharmaco-kinetic analysis and therapeutic drug monitoring, offering reproducible and reliable results.

- Fully validated assays for robust, sensitive results
- Validated as per international guidelines ICH M10 for bioassay validation
- Break-apart wells, shipped at 2-8 deg C with a lyophilized standard
- Consistent lot-to-lot with intra- and inter- assay precision <10%
- Recovery: 85 – 120%
- Sample Type: Serum (100 ul), EDTA/Heparin/Citrate Plasma (100 ul)
- The kit uses a biosimilar research grade standard / calibrator. The standard / calibrator has been validated against WHO/NIBSC standard and/or against commercially sourced innovator drug where available.



**AVAILABLE ELISA FOR ANTIBODY-DRUG CONJUGATES:**

Description	Pack Size
KRIBIOLISA™ Certolizumab Pegol (CIMZIA) Inhibition ELISA	KRIBIOLISA™ Dapirolizumab Pegol ELISA
KRIBIOLISA™ Trastuzumab Emtansine (KADCYLA) ELISA	KRIBIOLISA™ Denintuzumab Mafodotin ELISA
KRIBIOLISA™ Intact Brentuximab Vedotin ELISA	KRIBIOLISA™ Depatuzizumab Mafodotin ELISA
KRIBIOLISA™ Anatumomab Mafenatox ELISA	KRIBIOLISA™ Disitamab Vedotin ELISA
KRIBIOLISA™ Azintuzumab Vedotin ELISA	KRIBIOLISA™ Enapotamab Vedotin ELISA
KRIBIOLISA™ Belantamab Mafodotin ELISA	KRIBIOLISA™ Enfortumab Vedotin (PADCEV) ELISA
KRIBIOLISA™ Citatuzumab Bogatox ELISA	KRIBIOLISA™ Gemtuzumab Ozogamicin ELISA
KRIBIOLISA™ Ladiratuzumab Vedotin ELISA	KRIBIOLISA™ Muromonab-Cd3 ELISA
KRIBIOLISA™ Lupartumab Amadotin ELISA	KRIBIOLISA™ Naptumomab Estafenatox ELISA
KRIBIOLISA™ Lulizumab Pegol ELISA	KRIBIOLISA™ Patrimumab Deruxtecan ELISA
KRIBIOLISA™ Moxetumomab Pasudotox ELISA	KRIBIOLISA™ Pinatuzumab Vedotin ELISA
KRIBIOLISA™ Sacituzumab Govitecan (TRODELVY) ELISA	KRIBIOLISA™ Polatuzumab Vedotin (POLIVY) ELISA
KRIBIOLISA™ Cergutuzumab Amunaleukin ELISA	KRIBIOLISA™ Samrotamab Vedotin ELISA
KRIBIOLISA™ Clivatuzumab Tetraxetan ELISA	KRIBIOLISA™ Telisotuzumab Vedotin ELISA
KRIBIOLISA™ Cofetuzumab Pelidotin ELISA	KRIBIOLISA™ Tisotumab Vedotin ELISA
KRIBIOLISA™ Vadastuximab Talirine ELISA	KRIBIOLISA™ Vorsetuzumab Mafodotin ELISA
KRIBIOLISA™ Aprutumab Ixadotin ELISA	KRIBIOLISA™ Anetumab Corixetan ELISA

