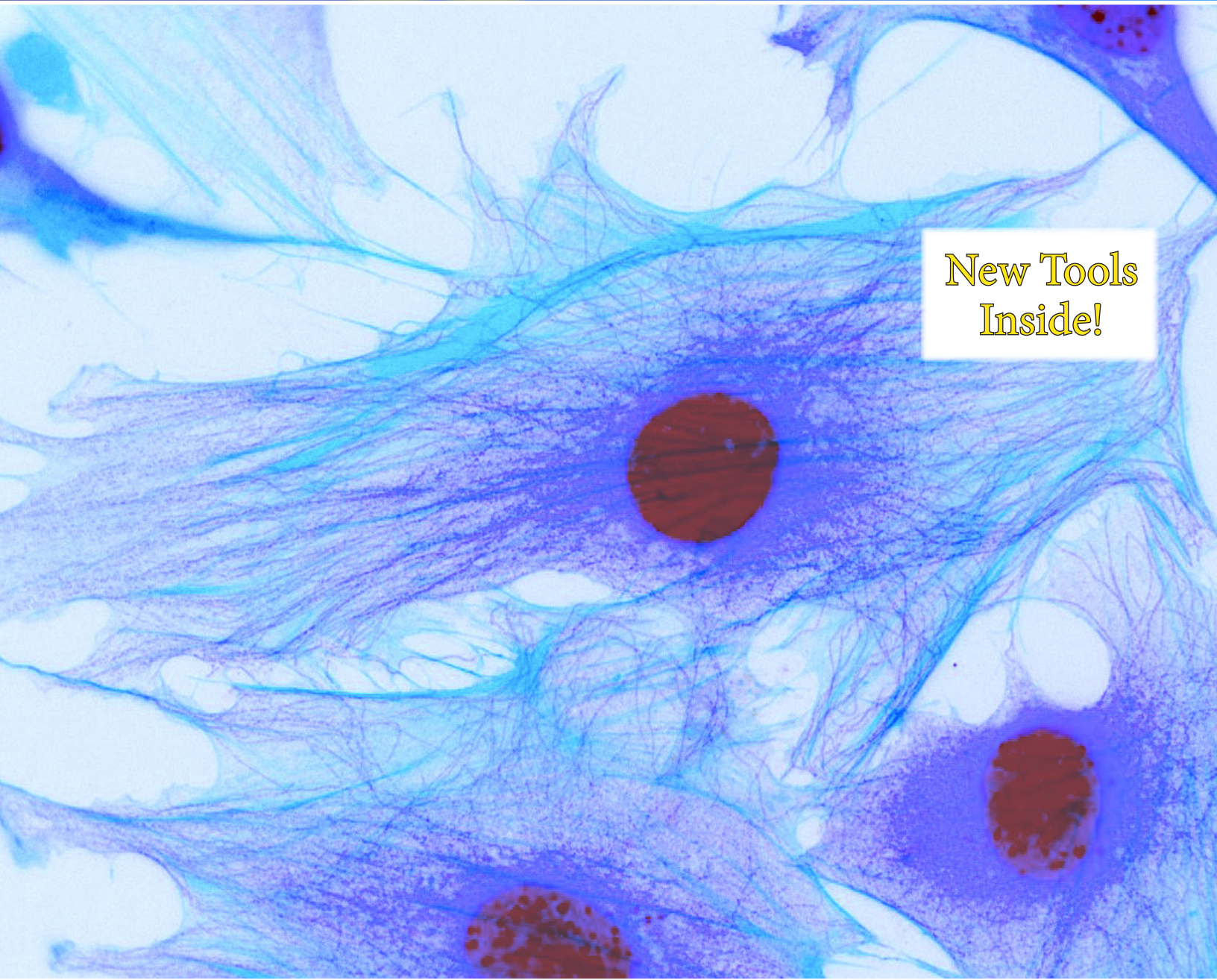


Acetyl-Lysine Investigation and Discovery.. Simplified

Toolkits for Acetyl-Lysine Detection and Visualization



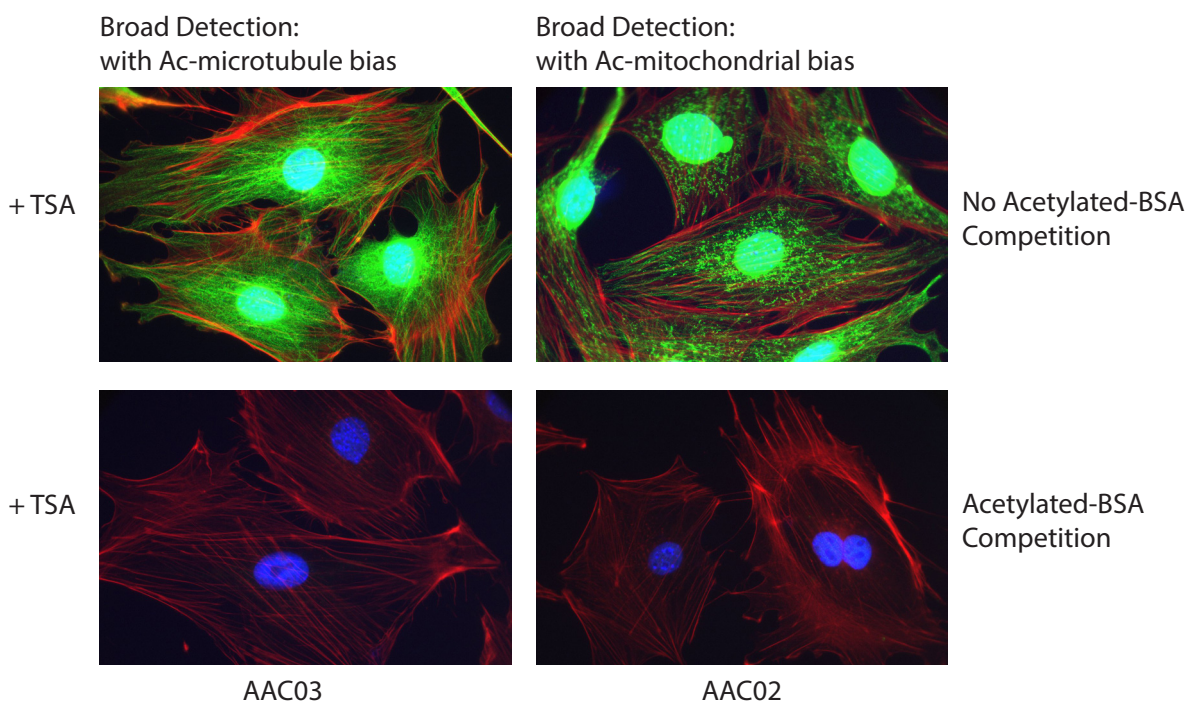
New Tools
Inside!



Signal-Seeker Tools
by **Cytoskeleton, Inc.**

Unique IF Tools for Acetyl-Lysine Research

Lysine acetylation is a critical post-translational modification that has been shown to play a fundamental role in epigenetic histone regulation. Recent acetylome studies indicate that acetyl-lysine regulation expands well beyond histones, and can target thousands of proteins and many different cellular processes. Many of these acetylome studies often link changes in global acetylation to disease progression. Of interest, changes in the acetylated microtubule network as well as mitochondrial proteins have been linked to many disease pathologies. Signal-Seeker's two newly developed acetyl-lysine antibodies have been validated for use in immunofluorescence.



Acetylated proteins (green): AAC02 or AAC03 (1:500), anti-mouse 488
 Actin (Red): Rhodamine Phalloidin
 Nucleus (Blue): DAPI

NEW Acetyl-Lysine Products

	Description	Amount	Item #
NEW Format	Signal-Seeker™ Acetyl-Lysine Detection Kit	30 assays	BK163
NEW Format	Signal-Seeker™ Acetyl-Lysine Detection Kit	15 assays	BK163-S
NEW	Signal-Seeker™ Acetyl-Lysine Detection Kit AAC03-Beads	30 assays	BK164
NEW Format	Acetyl-Lysine Affinity Beads	40 assays	AAC04-beads
	Acetyl-Lysine Control Beads	10 assays	CIG02-beads
	Acetyl-Lysine Mouse Antibody (3C6.08.20)	1 x 200 µl	AAC01
	Acetyl-Lysine Mouse Antibody (7B5A1)	2 x 100 µl	AAC02
NEW	Acetyl-Lysine Affinity Beads - AAC02	40 assays	AAC02-beads
	Acetyl-Lysine Mouse Antibody (19C4B2.1)	2 x 100 µl	AAC03
NEW	Acetyl-Lysine Affinity Beads - AAC03	40 assays	AAC03-beads
	Acetyl-Lysine Mouse Antibody-HRP labeled	1 x 100 µl	AAC03-HRP



Scan Here for Extensive Citation List

Robust Acetyl-Lysine Detection Tools

Enrichment of Total Acetylated Proteins

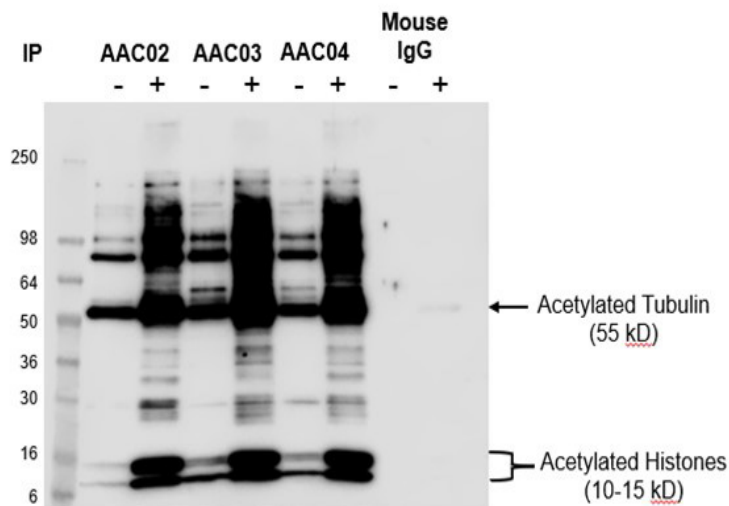


Fig 2 Enrichment of Total Acetylated Proteins. AAC02, AAC03, and AAC04 acetyl lysine enrichment beads (50µl bead slurry) were used to IP acetylated proteins from Cos-7 cells either treated (+) or untreated (-) with deacetylase inhibitors [TSA (1µM) and nicotinamide (16mM)] for 6 hours. The total profile of enriched acetylated proteins were eluted and analyzed by western blot with an AAC03-HRP antibody (1:3000). Mouse IgG beads are used as a control for non-specific binding (Cat # CIG02).

NEW Bead and Kit Formats For Versatile and Precise Acetylated Protein Detection

Key Features

- Optimized Kits For First-Time Acetyl Lysine Investigators
- Analyze acetylation of endogenous or transfected proteins in cell or tissue samples
- Most complete acetylated protein profile
- Stoichiometric analysis results in deeper mechanistic insight
- Check out the NEW additions to the highly cited Signal™ Seeker Toolbox (below)



Scan Here To Learn More

Superior Acetylated Protein Enrichment

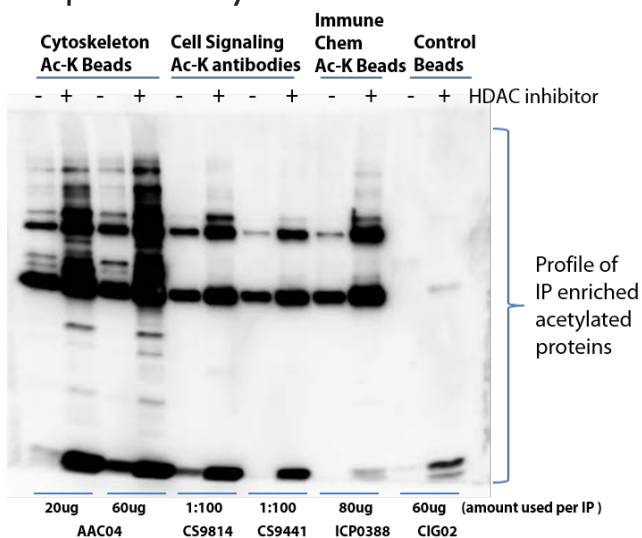
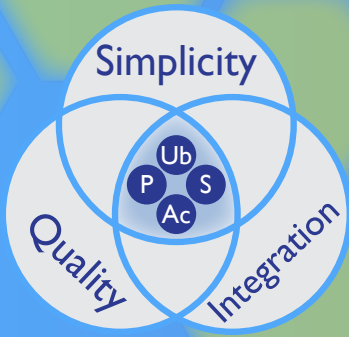


Figure 3 Signal-Seeker™ Acetyl-Lysine Affinity Beads outperforms other acetyl-lysine affinity beads: Various acetyl-lysine affinity reagents were used to IP acetylated proteins from Cos-7 cells either treated (+) or untreated (-) with TSA (1µM) and nicotinamide (1mM) for 6 hours. IPs were performed according to the manufacturer's instructions. Western blot was performed using AAC03-HRP antibody (1:3000).

Applications

Application	Product	Validation Data
Western Blot	Acetyl-Lysine Mouse Antibody-HRP labeled, Cat. # AAC03-HRP	Yes
	Acetyl-Lysine Mouse Antibody (7B5A1), Cat. # AAC02	Yes
	Acetyl-Lysine Mouse Antibody (19C4B2.1), Cat. # AAC03	Yes
	Acetyl-Lysine Mouse Antibody (3C6.08.20), Cat. # AAC01	Yes
Immunofluorescence	Acetyl-Lysine Mouse Antibody (7B5A1), Cat. # AAC02	Yes
	Acetyl-Lysine Mouse Antibody (19C4B2.1), Cat. # AAC03	Yes
	Acetyl-Lysine Mouse Antibody (3C6.08.20), Cat. # AAC01	Yes
Immunoprecipitation	Signal-Seeker™ Acetyl-Lysine Detection Kit, Cat. # BK163	Yes
	Signal-Seeker™ Acetyl-Lysine Detection Kit AAC03-Beads, Cat. # BK164	Yes
	Acetyl-Lysine Affinity Beads, Cat. # AAC04-beads	Yes
	Acetyl-Lysine Mouse Antibody (7B5A1), Cat. # AAC02	Yes
	Acetyl-Lysine Affinity Beads - AAC02 Cat. # AAC02-Beads	Yes
	Acetyl-Lysine Mouse Antibody (19C4B2.1), Cat. # AAC03	Yes
Chromatin IP	Acetyl-Lysine Affinity Beads - AAC03 Cat. # AAC03-Beads	Yes
	Acetyl-Lysine Mouse Antibody (3C6.08.20), Cat. # AAC01	Yes
	Acetyl-Lysine Mouse Antibody (7B5A1), Cat. # AAC02	Yes
	Acetyl-Lysine Mouse Antibody (19C4B2.1), Cat. # AAC03	Yes
	Acetyl-Lysine Mouse Antibody (3C6.08.20), Cat. # AAC01	Yes

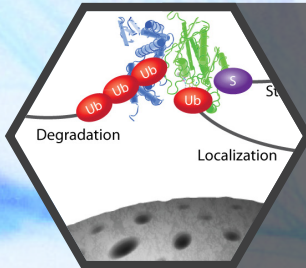
*Recommended products for each application are highlighted in **blue**



Ordering information
for USA and Canada:
Online - cytoskeleton.com
Phone - 303.322.2254
Fax - 303.322.2257

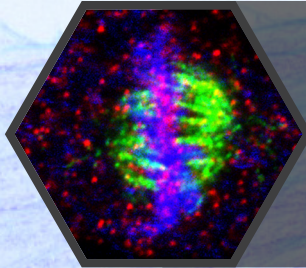
Cytoskeleton, Inc.
1830 S. Acoma St.,
Denver, CO 80223, USA.

International Customers
Locate your nearest distributor at:
cytoskeleton.com/distributors



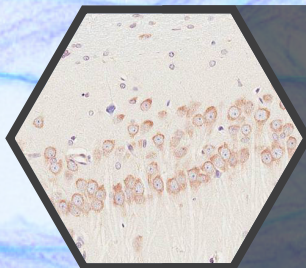
Signal Seeker™ Ubiquitin Tools

- Mono-/Poly-Ubiquitination Detection Kit
- Mono-/Poly-Ubiquitination Affinity Beads
- Ubiquitin Antibody-HRP labeled



Signal Seeker™ SUMOylation 2/3 Tools

- SUMO 2/3 Detection Kit
- SUMO 2/3 Affinity Beads
- SUMO 2/3 IF and HRP labeled Antibodies



Signal Seeker™ Phosphotyrosine Tools

- Phosphotyrosine Detection Kit
- Phosphotyrosine Affinity Beads
- Phosphotyrosine IF and HRP labeled Antibodies