

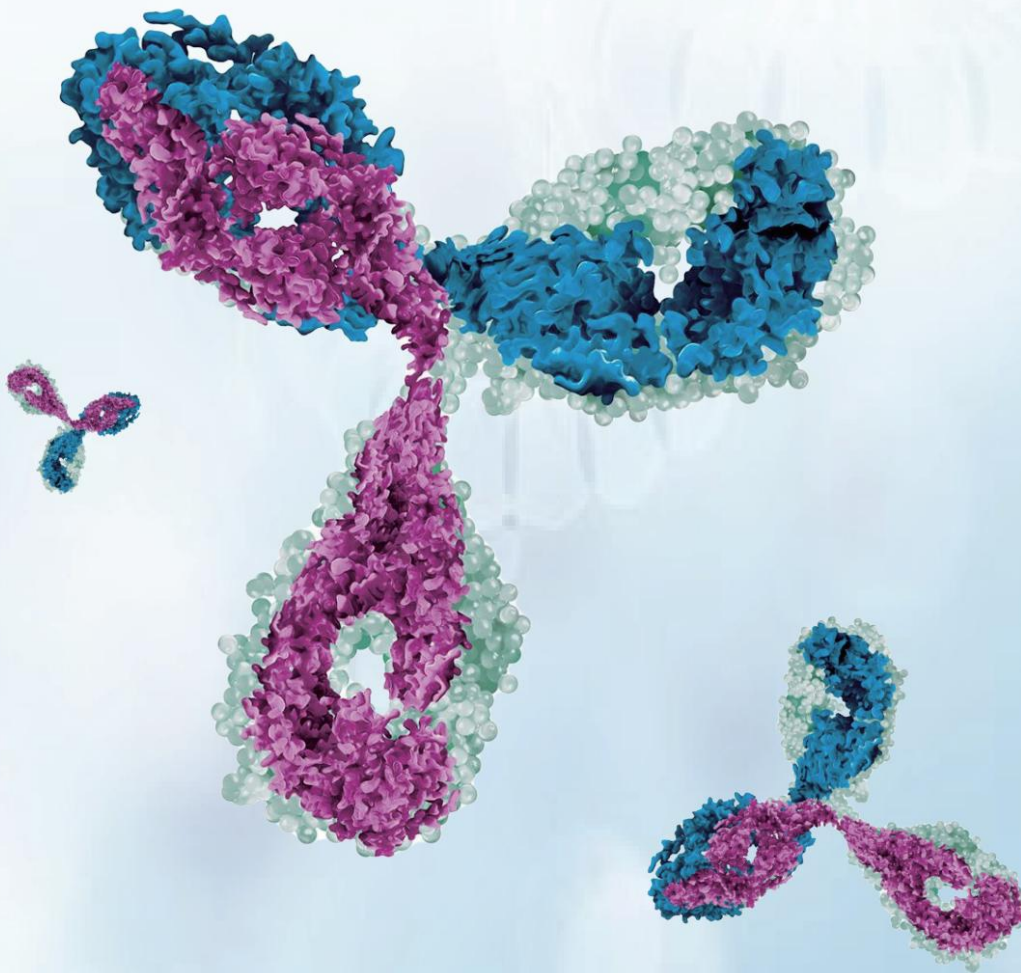
Elabscience®

A Reliable Research Partner in Life Science and Medicine.

Antibody

Recommended by CiteAb

Excellent and Innovative Antibody Development Capability



www.elabscience.com

Elabscience® Antibody

Elabscience® offers a wide range of guaranteed and well-selected Monoclonal and Polyclonal Antibodies based on different antibody development platforms. As a professional antibody supplier, Elabscience® antibody products are strictly validated to ensure purity and quality. In addition, its interactive and responsive product development pipelines and antibody customization services will provide customers with more options for novel targets.

Why Choose Elabscience® Antibody?

Superior Quality



- **High quality:** High specificity and affinity, good consistency and stability
- **Strict quality control:** Standardized operation procedures, multiple validation
- **Wide range of reactivity:** Human/Mouse/Rat/Monkey, etc
- **Wide range of applications:** WB/IHC/IF/IP/FC/ELISA
- **Detailed product parameters:** Application, Reactivity, Host, Immunogen information, Detection data, Dilution ratio, etc

Elabscience® was awarded as "Antibody Supplier to Watch in 2021" by CiteAb.

Wide Research Areas



Cancer



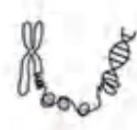
Immunology



Neuroscience



Stem Cells



Microbiology



Cell Biology



Cardiovascular



Metabolism



Signaling Transduction



Developmental Biology
Epigenetics and Nuclear
Signaling



Tag and Cell Markers

Rich Product Series

Elabscience® offers 17,000+ antibody products, including monoclonal and polyclonal antibodies, tag antibodies, phospho antibodies, acetyl antibodies, secondary antibodies, etc.

★ Primary Antibody

Monoclonal Antibody

Mouse Monoclonal Antibody:

As a traditional monoclonal antibody type with mature preparation methods, mouse mAb has high specificity and homogeneity.

Recommended Series:

- Affinity Agarose & Immunomagnetic Beads Antibodies

Rabbit Monoclonal Antibody:

Recombinant rabbit mAb combines the advantages of the rabbit immune system and recombinant protein technology including improved specificity, high affinity, stable product quality and high batch-to-batch consistency.

Polyclonal Antibody

Rabbit Polyclonal Antibody:

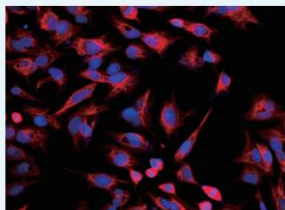
Polyclonal antibodies are prepared from the antiserum of immunized animals by affinity purification. This preparation method leads to the production of antibodies with high titer and high affinity against the target antigen.

Recommended Series:

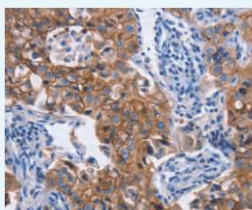
- Acetyl/Phospho/Methyl Antibodies
- KO validated Antibodies
- Immunohistochemistry Antibodies
- Cancer Research Antibodies



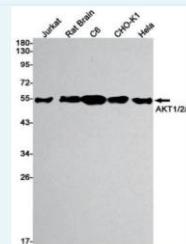
Validation data:



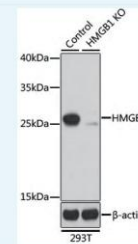
INF-γ Rabbit pAb



CK-18 Rabbit pAb



Recombinant AKT
Rabbit mAb



(KO Validated) HMGB1
Rabbit pAb

★ Secondary Antibody

Secondary antibodies combine enzymes or fluorochrome labels and indirectly detect the target protein by binding with the primary antibody, thus amplifying the signal and improving the sensitivity of detection.

Type

Goat Anti-Human/Mouse/ Rat/Rabbit IgG
Goat Anti-Human/Mouse IgM
Rabbit Anti-Human/Mouse/ Rat/Goat IgG
Rabbit Anti-Chicken IgY
Mouse Anti-Human/Rabbit IgG
Donkey Anti-Mouse/Goat IgG

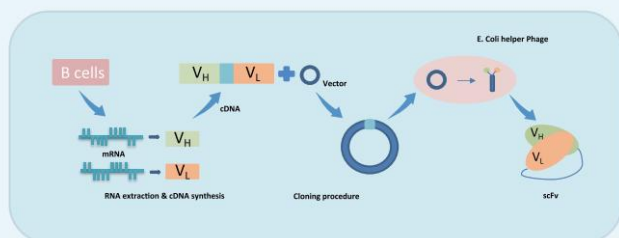
Conjugation

Unconjugated	Biotin
AP	HRP
Elab Fluor® 488	Elab Fluor® 594
Elab Fluor® 647	FITC
Cyanine3	TRITC

Interactive and Responsive Antibody Customization Services

Elabscience® has comprehensive product development platforms and interactive antibody customization services, which will provide you with more flexible and customized product selection.

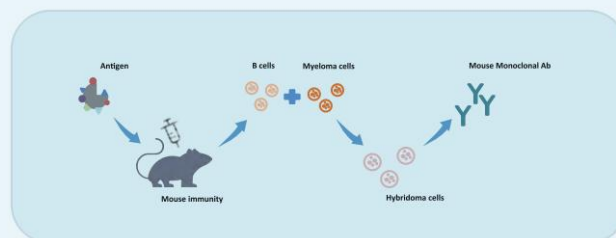
1. Phage display technique



Features:

- ① Provide one-stop service from design to screening, with large-scale expression of IgG, VHH, ScFv, Fab, etc.
- ② The natural human antibody library with diversity greater than 10^{10} has been built, and the nano-antibody library can be directly screened and used.
- ③ According to customer requirements, we can construct immune antibody libraries of multiple species and different forms of natural antibody libraries.

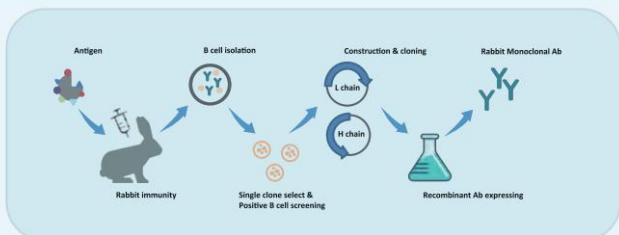
2. Mouse monoclonal antibody preparation technique



Features:

- ① Highly specific and uniform antibodies at the gram level can be easily obtained.
- ② A large number of highly specific and uniform antibodies can be obtained with relatively impure antigens.
- ③ Because of high specificity and single biological function, monoclonal antibodies can be used for radioimmuno-imaging and immune-directed therapy in vivo.

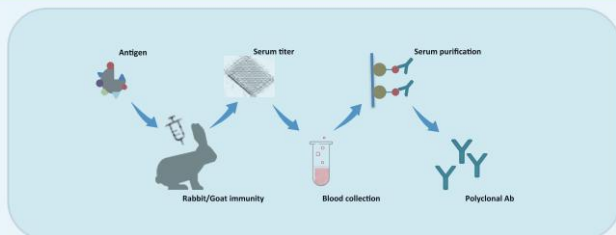
3. Rabbit monoclonal antibody preparation technique



Features:

- ① Highly specific and uniform antibody of gram level can be easily obtained.
- ② Compared with the traditional antibody preparation technology, it has higher efficiency.
- ③ Without cell fusion, the cycle is relatively short.
- ④ Suitable for any animal antibody screening.

4. Polyclonal antibody preparation technique



Features:

- ① The success rate of modified antibody preparation was higher than 95%.
- ② The preparation cycle is short.
- ③ The antibody titer generally reached the level of millions.

Top 50 Hot-selling Products

Cat.No.	Product Name	Reactivity	Application	Host
EA-IP-001	Anti-DYKDDDDK Affinity Agarose	Universal	IP,ColIP	Mouse
EA-IP-002	Anti-HA (YPYDVPDYA) Affinity Agarose	Universal	IP,ColIP	Mouse
EA-IP-003	Anti-MYC (EQKLISEEDL) Affinity Agarose	Universal	IP,ColIP	Mouse
EA-IP-005N	Anti-mCherry Nanobody Affinity Agarose	Universal	IP,ColIP	Alpaca
EA-IP-001M	Anti-DYKDDDDK Immunomagnetic Beads	Universal	IP,COIP	Mouse
EA-IP-002M	Anti-HA (YPYDVPDYA) Immunomagnetic Beads	Universal	IP,COIP	Mouse
EA-IP-003M	Anti-MYC (EQKLISEEDL) Immunomagnetic Beads	Universal	IP,ColIP	Mouse
E-AB-60012	Bcl-2 Polyclonal Antibody	H/M/R	WB,IHC,IF	Rabbit
E-AB-18244	BDNF Polyclonal Antibody	H/M/R	WB,IHC	Rabbit
E-AB-40338	beta actin Polyclonal Antibody	H/M/R	WB,IHC	Rabbit
E-AB-30939	Claudin 1 Polyclonal Antibody	H/M/R	WB,IHC-p,IF	Rabbit
E-AB-70040	GFAP Polyclonal Antibody	H/M/R	WB,IHC,IF	Rabbit

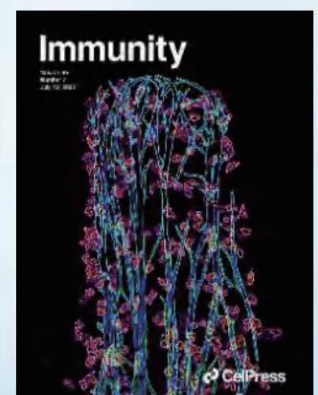
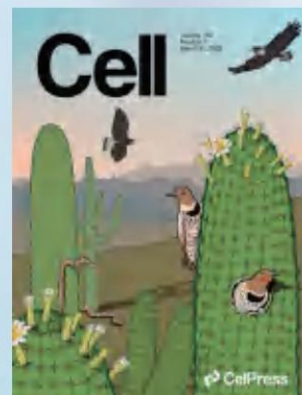
Cat.No.	Product Name	Reactivity	Application	Host
E-AB-30268	GLUT-4 Polyclonal Antibody	H/M/R	WB,IHC-p	Rabbit
E-AB-15178	LRRC15 Polyclonal Antibody	H/M/R	IHC	Rabbit
E-AB-70094	Ly6g Polyclonal Antibody	M	IHC,IF	Rabbit
E-AB-70247	MMP9 Monoclonal Antibody	H/M/R	WB	Mouse
E-AB-32469	P53 Polyclonal Antibody	H/M/R	WB,IHC-p,IF	Rabbit
E-AB-21121	Phospho-AMPK alpha1/2 (Thr183/172) Polyclonal Antibody	H/M/R/MK	WB,IHC-p,IF	Rabbit
E-AB-V1006	SARS-COV-2 Spike RBD Polyclonal Antibody (2019-nCoV)	SARS-COV2	WB,ELISA	Rabbit
E-AB-32901	SIRT1 Polyclonal Antibody	H/M/R	WB,IHC-p,IF	Rabbit
E-AB-33090	TGFB1 Polyclonal Antibody	H/M/R	WB,IHC-p,IF	Rabbit
E-AB-34268	α -SMA Polyclonal Antibody	H/M/R	WB,IHC-p,IF	Rabbit
E-AB-48018	beta actin Monoclonal Antibody	H/M/R/ZE	WB,IF	Mouse
E-AB-33121	TNF alpha Polyclonal Antibody	H/M/R	WB,IHC-p,IF	Rabbit
E-AB-48016	GAPDH Monoclonal Antibody	H/M/R...	WB,IF	Mouse
E-AB-40517	beta actin Polyclonal Antibody	H/M/R/MK/ZE	WB,IF	Rabbit
E-AB-13814	BAX Polyclonal Antibody	H/M/R	WB,IHC	Rabbit
E-AB-22004	BCL2 Monoclonal Antibody	Human	WB	Mouse
E-AB-20802	Phospho-Pan-Akt (Ser473) Polyclonal Antibody	H/M/R	WB,IHC-p,IF	Rabbit
E-AB-13815	CASP3 Polyclonal Antibody	H/M/R	WB,IHC	Rabbit
E-AB-30004	Cleaved-CASP3 p17 (D175) Polyclonal Antibody	H/M/R	WB,IHC-p,IF	Rabbit
E-AB-32233	NFkB-p65 Polyclonal Antibody	H/M/R	WB,IHC-p	Rabbit
E-AB-22115	Active CASP3 Monoclonal Antibody	H/M/R	WB,IHC-p,IF	Mouse
E-AB-20036	alpha Tubulin Monoclonal Antibody	H/M/R	WB,IHC-p,IF,IP	Mouse
E-AB-53280	CD63 Polyclonal Antibody	H/M	WB	Rabbit
E-AB-66940	Caspase-3 Polyclonal Antibody	H/M/R	WB,IHC,IF	Rabbit
E-AB-22015	p53 Monoclonal Antibody	Human	WB,IHC-p,IF	Mouse
E-AB-22159	TNF alpha Monoclonal Antibody	H/M/R	WB,IHC-p	Mouse
E-AB-20033	beta Tubulin Monoclonal Antibody	H/M/R/MK...	WB,IHC-p,IF	Mouse
E-AB-14586	APOA4 Polyclonal Antibody	Human	IHC	Rabbit
E-AB-32054	MMP2 Polyclonal Antibody	H/M/R/MK	WB,IHC-p,IF	Rabbit
E-AB-22001	PCNA Monoclonal Antibody	H/M/R	WB,IHC-p,IF	Mouse
E-AB-22022	GFAP Monoclonal Antibody	M/R	WB,IHC-p,IF	Mouse
E-AB-22128	Bax Monoclonal Antibody	H/M/R	WB,IHC-p	Mouse
E-AB-22005	HSP70 Monoclonal Antibody	H/M/R	WB,IHC-p,IF	Mouse
E-AB-68254	NRF2 Polyclonal Antibody	H/M/R	WB,IHC	Rabbit
E-AB-70205	GFAP Monoclonal Antibody	M/R	WB,IHC,IF	Mouse
E-AB-68252	TNF- α Polyclonal Antibody	H/M/R	IHC,IF	Rabbit
E-AB-70235	IL10 Polyclonal Antibody	M/R	IHC,IF	Rabbit
E-AB-30471	Pan-Akt Polyclonal Antibody	H/M/R	WB,IHC-p,IF	Rabbit

Applications: WB-Western Blot, IHC-Immunohistochemistry, IF-Immunofluorescence, IP-Immunoprecipitation, CoIP-Co-Immunoprecipitation.

Reactivity: H-Human, R-Rat, M-Mouse, MK-Monkey, HM-Hamster, ZE-Zebrafish.

Elabscience® Antibody Cited in Publications

Elabscience® products have been cited in more than **18,000** SCI papers with a total impact factor of over **90,000**, which have been published in top international journals such as *Nature*, *Nature Medicine*, *Cell*, *Immunity*, and *Molecular Cancer* multiple times.



Target	Cat. No.	Publication	Research Area	IF
SRSF3	E-AB-32966	Ilik iA, Glažar P, Tse K, et al. Autonomous Transposons Tune Their Sequences to Ensure Somatic Suppression[J]. <i>Nature</i> . 2024, 626(8001): 1116-1124.	Cell biology	50.5
KCNH7	E-AB-53444	Rexach JE, Cheng Y, Chen L, et al. Cross-disorder and Disease-specific Pathways in Dementia Revealed by Single-cell Genomics[J]. <i>Cell</i> , 2024, 187(20): 5753-5774.	Cell biology	45.5
NOV pAb	E-AB-15124	Correa-Gallegos D, Jiang D S, Christ S, et al. Patch Repair of Deep Wounds by Mobilized Fascia[J]. <i>Nature</i> , 2019, 576(7786): 287-292.	Cell biology	43.0
Goat Anti-Mouse IgG(H+L) (peroxidase/HRP conjugated) Goat Anti-Rabbit IgG(H+L) (peroxidase/HRP conjugated)	E-AB-1001 E-AB-1003	Yuan Y J, Cheng S, Bian G K, et al. Efficient Exploration of Terpenoid Biosynthetic Gene Clusters in Filamentous Fungi[J]. <i>Nature Catalysis</i> , 2022, 5: 277-287.	Microbiology Immunology	41.8
CD54 pAb	E-AB-70046	Born E, Lipskaia L, Breau M , et al. Eliminating Senescent Cells Can Promote Pulmonary Hypertension Development and Progression[J]. <i>Circulation</i> , 2023, 147(8): 650-666.	Cardiovascular Cell biology	39.9
EpCAM pAb	E-AB-70132	Redmer T, Raigel M, Sternberg C, et al. JUN Mediates the Senescence Associated Secretory Phenotype and Immune Cell Recruitment to Prevent Prostate Cancer Progression[J]. <i>Molecular Cancer</i> , 2024, 23(1): 114.	Cancer Biology	37.3

Brand Guarantee

Elabscience® stands at the forefront of biotechnology innovation, expertly combining independent design, R&D, manufacturing, and sales to deliver premier reagents and services for cell detection research. Our diverse product portfolio includes advanced solutions for detecting membrane and intracellular proteins (Flow cytometry antibodies), secreted proteins (ELISA kits), cell glycolipid metabolic intermediates and inorganic salts (Metabolism Assays), and comprehensive assessments of cellular function and health (Cell Apoptosis Assay, Cell cycle Assay, Cell Proliferation /Cytotoxicity/Viability). To keep pace with the rapid advancements in research, we are dedicated to the continuous development of cutting-edge antibody and protein reagents, ensuring that our products evolve to meet the latest scientific needs. Our commitment extends beyond cell detection to include sophisticated cell isolation and characterization, empowering researchers to tackle the most complex challenges in cell biology. We pride ourselves on maintaining stringent quality control for every product, enhancing the accuracy and reliability of your experimental results. Our relentless pursuit of excellence since 2009 has established our presence in over 150 countries and regions worldwide. Elabscience® is dedicated to addressing the evolving challenges in life sciences and healthcare. With a focus on delivering competitive, innovative solutions and driven by an unwavering commitment to excellence, we strive to be your trusted research partner in life sciences and medicine.



Elabscience Bionovation Inc.

 Toll-free: 1-888-852-8623

 Tel: 1-832-243-6086

 Fax: 1-832-243-6017

 Web: www.elabscience.com

 Email: orders@elabscience.com techsupport@elabscience.com

EFO85-2411v2