

CELL IMMORTALIZATION PRODUCTS and SERVICE




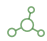


About Creative Bioarray

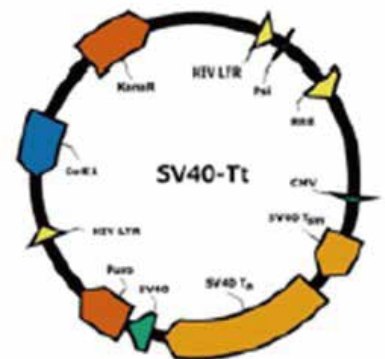
Creative Bioarray is a leading provider of immortalized human cell lines and immortalized animal cell lines. **Our cells and services are designed to fit the increasing need for relevant in vitro cell model systems and novel production hosts.**

Creative Bioarray has focused on the establishment of continuously growing human cell lines by reactivation of telomerase and thereby provides cells with highest similarities to primary cells in function and behavior. Our developed HT®Cell Immortalization Kit is comprised of retroviral, lentiviral and adenoviral particles for hTERT, p53 and siRNA, and SV40T antigens. In 2020, we also developed an **Epigenetic Induction of Cell Growth Service** to establish immortalized cell lines (No viral genes). All these tools will make your cell immortalization project simpler and easier than ever before. Moreover, we have been able to successfully immortalize cells from human, monkey, mouse, bovine, chicken, pig and dog by using different immortalizing agents or genes. **With the Epigenetic Approach, we have established Immortalized Chicken Hepatocytes, Immortalized Monkey Hepatocytes, Immortalized Dog Hepatocytes and Immortalized Human Hepatocytes. Creative Bioarray also offers gene editing services on immortalized cell lines.**

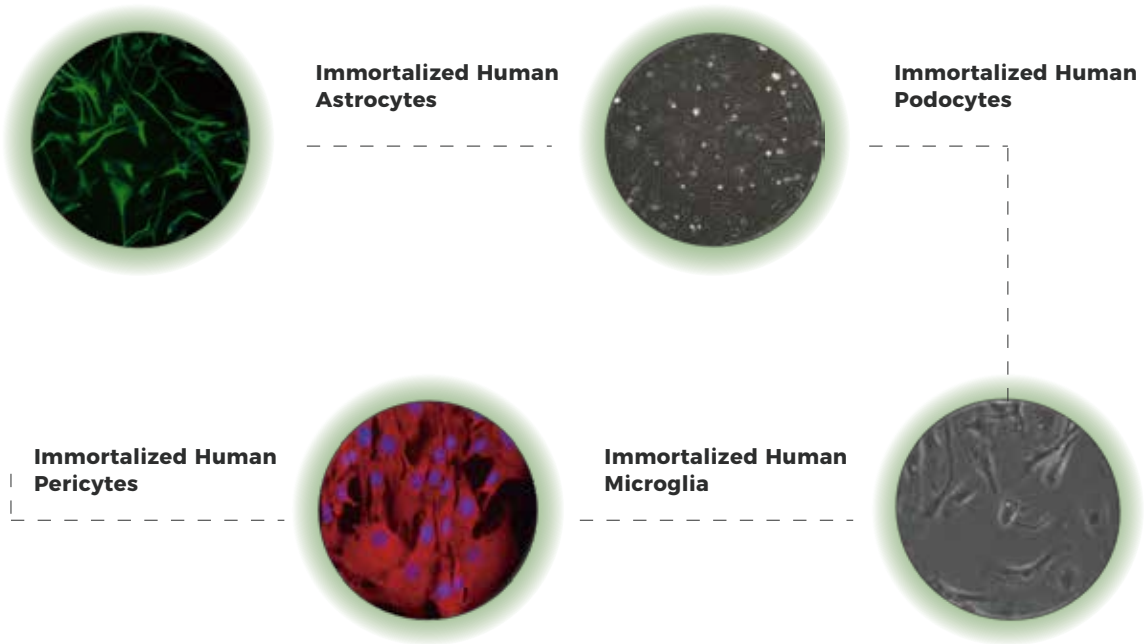
As a reliable partner to accelerate your research, we have the capabilities to utilize strategies that provide the best results to meet your goals.

Product and Service Capabilities

-  Immortalized cells of **various species and tissues**
-  Several cell immortalization systems including SV40, hTERT, EVB, HPVE E6/E7, Ras, p53, Myc
-  Flexible options on immortalization methods: immortalized with lentiviruses (SV40T, hTERT) or **Epigenetic Induction of Cells Growth Approach (NO viral)**
-  Cell screening for up to 30 passages
-  Transgene expression validation by RT-PCR
-  **4-6 weeks** depending on the immortalization method, cell source and species



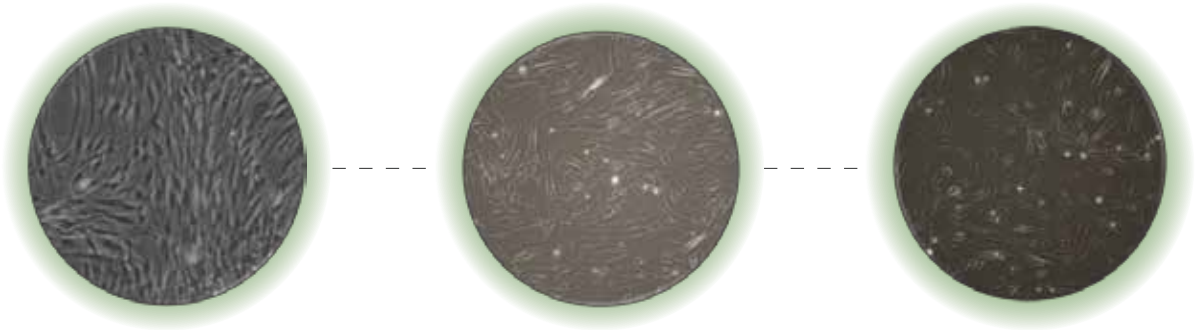
Immortalized Human Cell Lines



Cat No.	Product Name
CSC-C12025Z	Immortalized Human Astrocytes-SV40T
CSC-C12030Z	Immortalized Human Pericytes
CSC-I1918Z	Immortalized Human Podocyte Cells
CSC-I9004L	Immortalized Human Microglia
CSC-I9355Z	Immortalized Human Brain Microvascular Endothelial Cells
CSC-I9134L	Immortalized Human Cardiac Fibroblasts
CSC-I2054Z	Immortalized Human Endometrial Epithelial Cells
CSC-I9071L	Immortalized Human Cardiomyocytes-SV40
CSC-I9182L	Immortalized Human Sertoli Cells-SV40

Cat No.	Product Name
CSC-I2112Z	Immortalize Human Cervical Epithelial Cells
CSC-I2104Z	Immortalized Human Epidermal Keratinocytes-hTERT
CSC-I2111Z	Immortalized Human Schwann Cells-SV40T
CSC-I9106L	Immortalized Human Synovial Membrane Fibroblasts-SV40
CSC-I9095L	Immortalized Human Dermal Microvascular Endothelial Cells
CSC-I9188L	Immortalized Human Hepatic Sinusoidal Endothelial Cells
CSC-I9204L	Immortalized Human Fallopian Tube Secretory Epithelial Cells
CSC-I2089Z	Immortalized Human Lymphatic Endothelial Cells-SV40
CSC-I9157L	Immortalized Human Nasal Epithelial Cells-SV40
CSC-I9102L	Immortalized Human Skeletal Muscle Myoblasts
CSC-I9094L	Immortalized Human Skeletal Muscle Cells
CSC-I9038L	Immortalized Human Umbilical Vein Endothelial Cells
CSC-I9205L	Immortalized Human Corneal Endothelial Cells- SV40T
CSC-I9038L	Immortalized Human Umbilical Vein Endothelial Cells
CSC-I9016L	Immortalize Human Hepatocytes-SV40
CSC-I9011L	Immortalized Human Skin Fibroblast-SV40
CSC-I9069L	Immortalized Human Skin Fibroblast-hTERT
CSC-I2053Z	Immortalized Human Aortic Endothelial Cells
CSC-I1912Z	Immortalized Human Neuron Cells-SV40 (Tet-on)
CSC-I1913Z	Immortalized Human Hepatic Stellate Cells-SV40 (Tet-on)
CSC-I9138L	Immortalized Human Mammary Epithelial Cells
CSC-I9356Z	Immortalized Human Conjunctival Epithelial Cells
CSC-I9357Z	Immortalized Human B Cells

Immortalized Human Stem Cell Lines



Immortalized Human Wharton's Jelly derived Mesenchymal Stem Cells

Immortalized Human Adipose-derived Mesenchymal Stem Cells

Immortalized Human Bone-marrow derived Mesenchymal Stem Cells

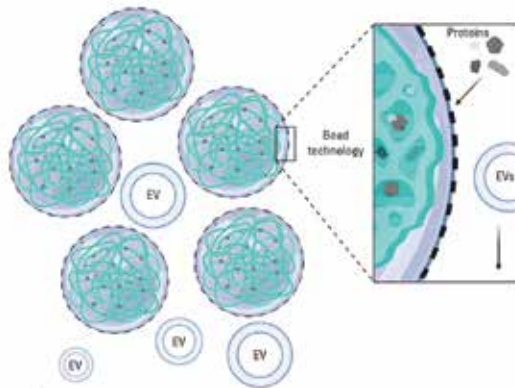
Stem cells are found in various parts of the human body and play important roles in the maintenance of tissue homeostasis and function. MSCs carry an enormous therapeutic potential and model systems to study MSCs.

The five human mesenchymal stem cell lines have a differentiation potential similar to the corresponding normal cells. We have characterized the expression of typical markers and functions.

Cat No.	Product Name
CSC-I2031Z	Immortalized Human Wharton's Jelly Derived Mesenchymal Stem Cells
CSC-I2040Z	Immortalized Human Adipose-derived Mesenchymal Stem Cells-SV40T
CSC-I2041Z	Immortalized Human Umbilical Cord-Derived Mesenchymal Stem Cells-SV40T
CSC-I2042Z	Immortalized Human Umbilical Cord-Derived Mesenchymal Stem Cells-SV40T+hTERT
CSC-I2037Z	Immortalized Human Bone Marrow-Derived Mesenchymal Stem Cells-SV40T
CSC-I2038Z	Immortalized Human Bone Marrow-Derived Mesenchymal Stem Cells-SV40T+hTERT
CSC-I2032Z	Immortalized Human Adipose-Derived Mesenchymal Stem Cells

Extracellular Vesicles from Immortalized Stem Cells

-Creative Bioarray has focused on the establishment of human cell lines that allow standardizable production of high quality extracellular vesicles.



Exosomes and extracellular vesicles (EVs) are increasingly being used for biomarker discovery and explored as a therapeutic delivery method. In recent years evidence has accumulated that the potency of mesenchymal stem cells at least in part is mediated by secreted extracellular vesicles (EVs). **Some Immortalized Stem Cell Lines from Creative Bioarray have been established under conditions that will allow the production of EVs.**

The five cell lines have been established under conditions that will allow the production of EVs.

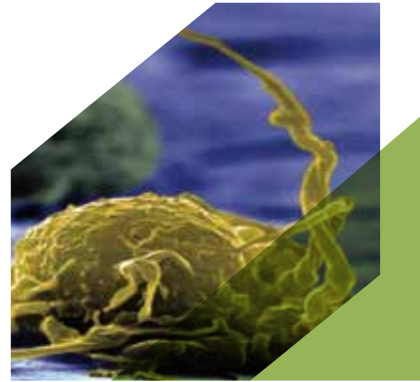
Cat No.	Product Name
CSC-I2108Z	Immortalized Human Placental Tissue-Derived Mesenchymal Stem Cells-hTERT
CSC-I2109Z	Immortalized Human Reflected Amniotic Membrane-Derived Mesenchymal Stem Cells-hTERT
CSC-I2110Z	Immortalized Human Placental Amniotic Membrane-Derived Mesenchymal Stem Cells-hTERT
CSC-I2107Z	Immortalized Human Bone Marrow-Derived Mesenchymal Stem Cells-hTERT
CSC-I2032Z	Immortalized Human Adipose-derived Mesenchymal Stem Cells-hTERT

EVs from our Immortalized Human Adipose-derived Mesenchymal Stem Cells-hTERT (CSC-I2032Z) are characterized by the typical EV morphology, presence of EV marker proteins as well as anti-inflammatory and anti-fibrotic activities.

Immortalized Human Tumor-derived Cell Lines

The development of cancer is a multi-step process in which normal cells sustain a series of genetic alterations that together program the malignant phenotype. Much of our knowledge of cancer biology results from the detailed study of specimens and cell lines derived from patient tumors. Over the past several years, the recognition that telomeres and telomerase play essential roles in regulating cell lifespan now permits the development of new models of human cancer.

Cell immortalization is a great method to establish experimental models to study cancer.



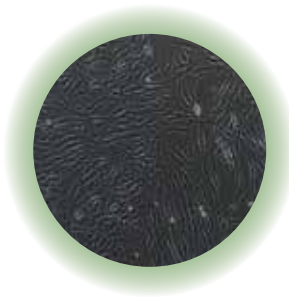
Cat No.	Product Name
CSC-I2047Z	Immortalized Human Vestibular Schwannoma Cells
CSC-I2050Z	Immortalized Human Pancreatic Neuroendocrine Tumor Cells
CSC-I2051Z	Immortalized Human Pancreatic Tumor Cells
CSC-I2052Z	Immortalized Human Pancreatic Tumor-associated Fibroblasts
CSC-I2060Z	Immortalized Human Primary Gastric Carcinoma Cells

Immortalized Animal Cell Lines

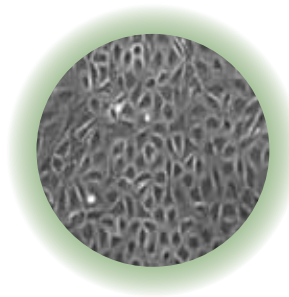
Immortalized Animal Cell Lines are well established, relatively easy and inexpensive to use, and offer several key advantages over the use of tissue sections. The main advantage of this model is that cells retain functions and phenotypes close to those of tissues/organs in vivo, and the effect of drugs/toxins can be studied on isolated primary cells at the cellular level. **We offer a wide range of cell lines, but if you have specific requirements we can also offer you custom immortalized cells.**



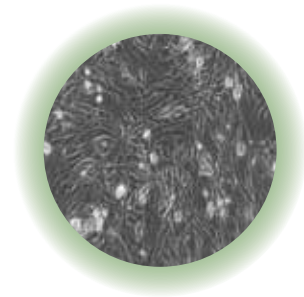
Cat No.	Product Name
CSC-I9351L	Immortalized Mouse Hepatic Stellate Cells-SV40T
CSC-I2055Z	Immortalized Rat Brain Microvascular Endothelial Cells
CSC-I2056Z	Immortalized Mouse Lung Fibroblasts
CSC-I2083Z	Immortalized Mouse Granulosa Cells-SV40
CSC-I2059Z	Immortalized Mouse Pancreatic Stellate Cells
CSC-I2061Z	Immortalized C57BL/6 Mouse Adipose-Derived Mesenchymal Stem Cells



Immortalized Porcine Skeletal Muscle Satellite Cells



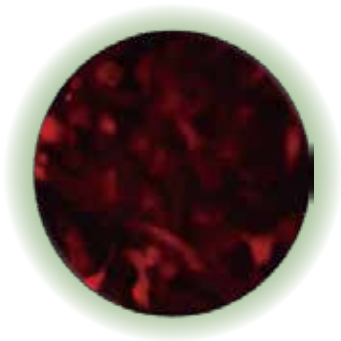
Immortalized Monkey Hepatocytes



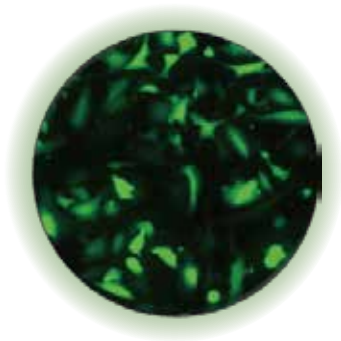
Immortalized Chicken Skeletal Muscle Cells-SV40

Cat No.	Product Name
CSC-I9234L	Immortalized Chicken Skeletal Muscle Cells-SV40
CSC-I2079Z	Immortalized Chicken Embryo Fibroblast-SV40
CSC-I2072Z	Immortalized Monkey Hepatocytes
CSC-I2073Z	Immortalized Monkey Hepatic Fibroblasts
CSC-I2083Z	Immortalized Mouse Granulosa Cells-SV40
CSC-I2090Z	Immortalized Goat Mammary Epithelial Cells-SV40
CSC-I2065Z	Immortalized Porcine Tonsil Epithelial Cells
CSC-I2066Z	Immortalized Porcine Hepatic Stellate Cells
CSC-I2067Z	Immortalized Porcine Skeletal Muscle Satellite Cells
CSC-I2069Z	Immortalized Porcine Nasal Mucosal Epithelial Cells

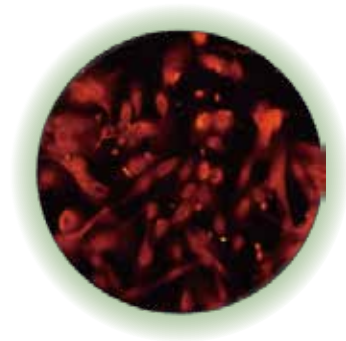
Fluorescent Immortalized Cell Lines



Immortalized Human
Microglia-RFP



Immortalized Human
Microglia-GFP



Immortalized Human Retinal
Microvascular
Pericytes-hTERT-RFP

Cat No.	Product Name
CSC-C12026Z	Immortalized Human Brain Microvascular Endothelial Cells-GFP
CSC-C12028Z	Immortalized Human Microglia-GFP
CSC-C12029Z	Immortalized Human Microglia-RFP
CSC-I9358Z	Immortalized Human Gallbladder Epithelial Cells-GFP



**For more immortalized cell lines, please visit our website
www.creative-bioarray.com.**

Creative Bioarray provides Immortalized Cell Lines and Customized Cell Immortalization Services for your scientific research

With many years of experience specializing in Immortalized Cell Lines and Immortalization services, we have supported thousands of projects in the United States and globally. Each project is individually tailored and managed by our team of scientists, specialists and data experts.

CONTACT US

Tel: 1-631-626-9181(US) | 44-208-123-7131 (EU)

Email: info@creative-bioarray.com

Fax: 1-631-614-7828

SUITE 115, 17 Ramsey Road, Shirley, NY 11967, USA

