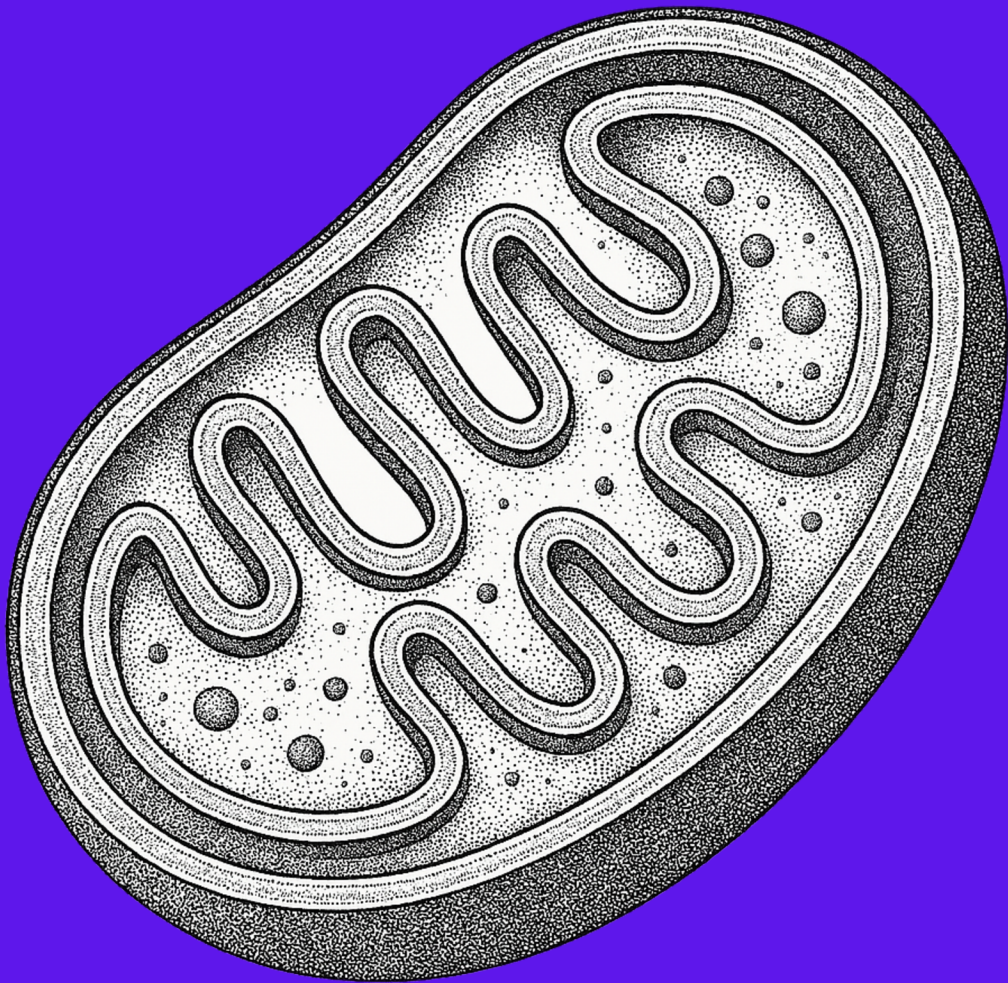
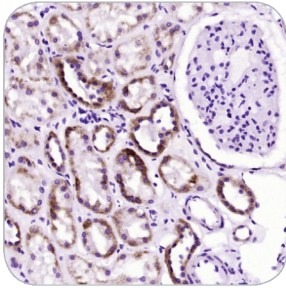


MITOCHONDRIAL MARKERS



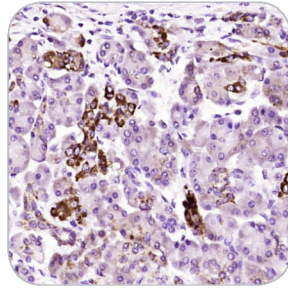
MITOCHONDRIAL MARKERS

SOD2 | bs-20667R



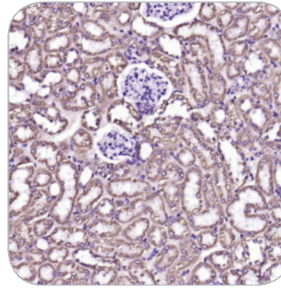
IHC-P | Human kidney cells

SOD2 | bs-20667R



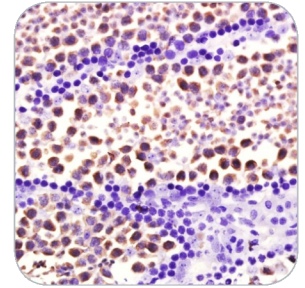
IHC-P | Human pancreatic cancer

VDAC1 | bsm-52251R



IHC-P | Mouse kidney cells

HSP70 | bsm-33048M



IHC-P | Mouse testis cells

TARGET	APPLICATION	SPECIES	CATALOG NO.
TOMM20	IHC, IF	Hu, Rt	bs-22121R
TOMM20	WB, ELISA, IHC, IF	Hu, Ms, Rt	bs-7357R
TOMM40	ELISA, IHC, IF, ICC	Rt, Oth	bs-17227R
VDAC	WB, ELISA, IHC, IF, ICC	Hu, Rt	bs-1461R
VDAC3 PubMed	WB, ELISA, IHC, IF, ICC	Ms, Rt	bs-7647R
VDAC1 PubMed	WB, IHC, IF	Hu, Ms, Rt	bsm-52251R
COXIV (Ser58)	WB	Ms, Rt	bs-70052R
OPA1 PubMed	WB, ELISA, IHC, IF, ICC	Rt	bs-11764R
DRP1 (Ser616) PubMed	ELISA, IHC, IF, ICC	Hu, Ms	bs-12702R
Cytochrome C PubMed	WB, ELISA, FCM, IHC, IF, ICC	Ms, Rt	bs-0013R
Cytochrome C PubMed	WB, ELISA	Ms, Rt	bs-22900R
Cytochrome C PubMed	WB, IHC, IF, ICC	Hu, Rt, Rbt	bsm-33193M
Cytochrome C	WB, IHC, IF, ICC	Hu, Ms, Rt	bsm-52050R
TFAM	WB	Hu	bs-70282R
TFAM	WB	Hu, Ms, Rt	bs-70283R
TFAM	WB, IHC, IF, ICC	Hu	bsm-54118R
PINK1 PubMed	WB	Hu, Ms, Rt	bs-22173R
PINK1	WB	Hu	bs-70932R
PINK1 PubMed	WB, IHC, IF, ICC	Hu	bsm-51265M
MFN1 PubMed	WB, ELISA, FCM, IHC	Rt	bs-0557R
MFN1	WB, IHC, IF, ICC	Hu, Ms, Rt	bsm-60386M
PHB2	WB, ICC, IF	Hu, Ms, Rt	bsm-60543R
GRP75 PubMed	WB, ELISA, IHC, IF, ICC	Hu, Ms, Rt	bs-1469R
GRP75	WB, IHC, IF	Hu, Ms, Rt	bsm-60404M
HSP60 PubMed	WB, ELISA, IHC, IF, ICC	Hu, Ms, Rt	bs-0191R
HSP60	WB	Hu, Ms, Rt	bsm-70518M

TARGET	APPLICATION	SPECIES	CATALOG NO.
HSP70 PubMed	WB, ELISA, FCM, IHC, IF, ICC	Hu, Ms, Rt	bs-0126R
HSP70 Tyr611	WB, ELISA, FCM, IHC, IF, ICC	Hu, Ms, Rt	bs-10448R
HSP70 Tyr41	WB, ELISA, FCM, IHC, IF, ICC	Hu, Ms, Rt	bs-10451R
HSP70 Tyr41	WB, ELISA, IHC, IF, ICC	Hu, Ms, Rt	bs-5362R
HSP70 Tyr525 PubMed	WB, ELISA, FCM, IHC, IF, ICC	Hu	bs-5365R
Hsp70 (Ser153)	WB	Hu	bs-70132R
HSP70 PubMed	WB, IHC, IF	Hu, Ms, Pg	bsm-33048M
HSP70	WB, IHC, IF, FCM, ICC, IF	Hu, Ms, Rt	bsm-52241R
HSP90 beta PubMed	WB, ELISA, FCM, IHC, IF, ICC	Hu, Ms, Rt	bs-0135R
HSP90 alpha PubMed	WB, ELISA, IHC, IF, ICC	Hu, Ms	bs-10100R
Hsp90 beta (Ser226)	FCM	Hu	bs-18074R
HSP90 alpha Thr5 + Thr7	WB, ELISA, IHC, IF, ICC	Hu, Ms	bs-3181R
HSP90 beta	WB	Hu, Ms, Rt	bsm-33136M
HSP90 PubMed	WB, IHC, IF	Hu, Ms, Rt	bsm-51215M
HSP90 alpha	WB, IHC, IF, ICC	Hu, Ms, Rt	bsm-52353R
SIRT3 PubMed	WB, IHC, IF, ICC	Hu, Ms, Rt	bs-55199R
SIRT3 PubMed	WB, ELISA, IHC, IF, ICC	Hu, Ms, Rt	bs-6105R
SIRT3	WB	Hu	bsm-60691R
Park7 (DJ-1)	WB, IHC	Hu, Ms, Rt, Bv	bsm-70215M
AIF PubMed	WB, ELISA, IHC, IF, ICC	Hu, Ms, Rt, Pg	bs-0037R
AIF1 PubMed	WB, ELISA, FCM, IHC, IF, ICC	Hu, Ms, Rt	bs-1363R
AIF1 PubMed	WB, FCM, IHC, IF, ICC	Hu, Ms, Rt	bsm-54132R
SOD2 PubMed	WB, IHC	Hu, Ms	bs-1080R
SOD2 PubMed	IHC, IF, FCM	Hu, Ms, Rt	bs-20667R
SOD2 PubMed	WB, ELISA, IHC, IF, ICC	Hu, Ms, Rt	bs-23402R
SOD2 PubMed	WB, IHC, IF	Hu	bsm-51267M

WB - Western Blot | IHC - Immunohistochemistry | ICC - Immunocytochemistry | IF - Immunofluorescence | FCM - Flow Cytometry | Bv - Bovine | Hu - Human | Ms - Mouse | Oth - Other | Pg - Pig | Rt - Rat | Rbt - Rabbit