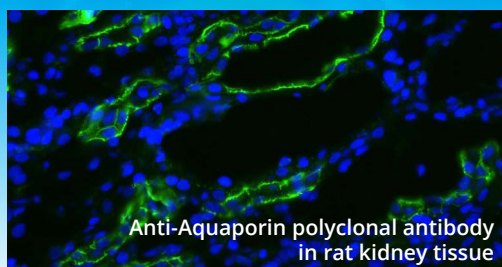
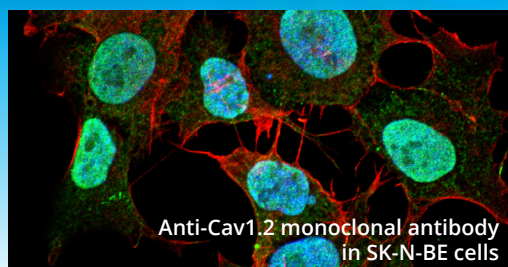


# Ion Channel

## Antibodies and Small Molecules



### Antibodies

Target	Clone	Host	Applications	Reactivity	Catalog No.
Aquaporin 1	PAb	Rabbit	WB, IHC, ICC/IF	Hu, Ms, Rt	SPC-502
Aquaporin 2	PAb	Rabbit	WB, IHC, ICC/IF	Hu, Ms, Rt	SPC-503
Aquaporin 3	PAb	Rabbit	WB, IHC, ICC/IF	Hu, Ms, Rt	SPC-504
Aquaporin 4	PAb	Rabbit	WB, IHC, ICC/IF	Hu, Ms, Rt	SPC-505
ASIC1	N271/44	Mouse	WB, IHC, ICC/IF	Ms, Rt	SMC-427
ATP7B	N62/29	Mouse	WB, IHC, ICC/IF, IP	Hu, Ms, Rt	SMC-399
CASPR2 <b>New!</b>	FF19	Rabbit	WB, IHC, ICC/IF	Hu, Ms, Rt	SMC-623
Cav Beta 2	N8B/1	Mouse	WB, IHC, ICC/IF, IP, AM	Hu, Ms, Rt	SMC-332
Cav1.2	N57/46	Mouse	WB, IHC, ICC/IF, IP, AM	Hu, Ms, Rt, Hm	SMC-300
Cav1.3	N48A/9	Mouse	WB, IHC, ICC/IF, IP, AM	Hu, Ms, Rt	SMC-301
Cav3.1	N178A/9	Mouse	WB, IHC, ICC/IF	Hu, Ms, Rt	SMC-405
Cav3.2	N55/10	Mouse	WB, IHC, ICC/IF, IP, AM	Hu, Ms, Rt	SMC-303
ENaC alpha	2G4	Mouse	WB, IHC	Ms, Rt	SMC-239
ENaC alpha	14E10	Mouse	WB, IHC	Ms, Rt	SMC-242
ENaC alpha	PAb	Rabbit	WB, IHC, ICC/IF	Rt, Ms, Xe	SPC-403
ENaC beta	PAb	Rabbit	WB, IHC, ICC/IF, IP	Hu, Ms, Rt, Xe, Hm	SPC-404
ENaC beta	7B8	Mouse	WB, IHC	Ms	SMC-240
ENaC beta	16E4	Mouse	WB	Ms	SMC-241
ENaC gamma	PAb	Rabbit	WB, IHC, ICC/IF	Hu, Rt, Ms, Xe, Hm	SPC-405
GABA A Receptor alpha 5	N415/24	Mouse	WB, IHC, ICC/IF	Hu, Ms, Rt	SMC-494
HCN1	N70/28	Mouse	WB, IHC, IP, AM	Hu, Ms, Rt	SMC-304
HCN2	N71/37	Mouse	WB, IHC, ICC/IF, IP, AM	Hu, Ms, Rt	SMC-305
HCN4	N114/10	Mouse	WB, IHC, ICC/IF, AM, FACS	Hu, Ms, Rt, Rb	SMC-320
KChIP3 <b>New!</b>	X12	Rabbit	WB	Hu, Rt	SMC-629
KCNQ1	N37A/10	Mouse	WB, IHC, ICC/IF, IP, AM	Hu, Ms, Rt, Hm	SMC-307
KCNQ4	N43/6	Mouse	WB, IHC, ICC/IF, IP, AM	Hu, Ms, Rt	SMC-309
Kir4.1	PAb	Rabbit	WB, ICC/IF	Hu, Rt	SPC-700
Kir6.1	N366/60	Mouse	WB, IHC, ICC/IF	Hu, Ms, Rt	SMC-491

# Ion Channel

## Antibodies and Small Molecules

### Antibodies

Target	Clone	Host	Applications	Reactivity	Catalog No.
<b>Kv1.2 New!</b>	C25	Rabbit	WB, IHC, ICC/IF	Hu, Ms, Rt	SMC-628
<b>Kv1.3 New!</b>	CAR1.1	Rabbit	WB, IHC, ICC/IF	Hu, Ms, Rt	SMC-630
<b>NALCN</b>	N187/7	Mouse	WB, ICC/IF	Hu, Ms, Rt	SMC-417
<b>Nav1.7</b>	N68/6	Mouse	WB, ICC/IF, IP, AM	Hu, Ms, Rt, Hm	SMC-314
<b>Nav1.8</b>	N134/12	Mouse	WB, IHC, ICC/IF, AM	Hu, Ms, Rt, Mk	SMC-342
<b>NaVbeta3</b>	N396/29	Mouse	WB, ICC/IF	Hu, Ms, Rt	SMC-490
<b>NR2B</b>	N59/36	Mouse	WB, IHC, ICC/IF, IP, AM	Hu, Ms, Rt	SMC-337
<b>Slo1 / BKAlpha maxi-K+ Channel New!</b>	S22	Rabbit	WB, IHC, ICC/IF	Hu, Ms, Rt	SMC-625
<b>Slo2.2</b>	N3/26	Mouse	WB, IHC, ICC/IF, AM	Hu, Ms, Rt	SMC-323
<b>Stargazin</b>	N245/36	Mouse	WB, ICC/IF	Hu, Ms, Rt	SMC-422
<b>TASK1</b>	N374/48	Mouse	WB, IHC, ICC/IF	Hu, Ms, Rt	SMC-473
<b>TRPC5</b>	N67-15	Mouse	WB, IHC, IP, AM	Hu, Ms, Rt	SMC-344
<b>TRPC7</b>	N64A-36	Mouse	WB, IHC, ICC/IF, IP, AM	Hu, Ms, Rt	SMC-343
<b>TRPM7</b>	N74/25	Mouse	WB, IHC, ICC/IF, AM	Hu, Ms, Rt	SMC-316
<b>TRPV3</b>	N15/4	Mouse	WB, IHC, ICC/IF, IP, AM	Hu, Ms, Rt	SMC-319
<b>TRPV3</b>	N15/39	Mouse	WB, IHC, ICC/IF, IP, AM	Hu, Ms, Rt	SMC-334
<b>VDAC1</b>	N152B-23	Mouse	WB, IHC, ICC/IF	Hu, Ms, Rt	SMC-456

### Small Molecules

Product	Description	Molecular Formula	CAS No.	Catalog No.
<b>Amlodipine</b>	L-type Ca channel blocker	$C_{20}H_{25}ClN_2O_5 \cdot C_6H_5SO_3H$	111470-99-6	SIH-315
<b>Diazoxide</b>	K-ATP channel activator	$C_8H_7ClN_2O_2S$	364-98-7	SIH-548
<b>Dofetilide</b>	Herg channel blocker	$C_{19}H_{27}N_3O_5S_2$	115256-11-6	SIH-311
<b>E-4031</b>	Herg channel blocker	$C_{21}H_{27}N_3O_3S \cdot 2HCl \cdot 2N_2O$	113558-89-7	SIH-317
<b>Felodipine</b>	L-type Ca channel blocker	$C_{18}H_{19}Cl_2NO_4$	72509-76-3	SIH-323
<b>Flupirtine maleate</b>	Kv7 channel activator	$C_{15}H_{17}FN_4O_2 \cdot C_4H_4O_4$	75507-68-5	SIH-376
<b>Isradipine</b>	L-type Ca channel blocker	$C_{19}H_{21}N_3O_5$	75695-93-1	SIH-314
<b>KB-R7943 mesylate</b>	TRPC channel blocker	$C_{16}H_{17}N_3O_3S \cdot CH_3SO_3H$	182004-65-5	SIH-312
<b>Minoxidil</b>	K+ channel activator	$C_9H_{15}N_5O$	38304-91-5	SIH-318
<b>Nicardipine HCl</b>	L-type Ca channel blocker	$C_{26}H_{29}N_3O_6 \cdot HCl$	54527-84-3	SIH-313
<b>Nifedipine</b>	L-type Ca channel blocker	$C_{17}H_{18}N_2O_6$	21829-25-4	SIH-309
<b>Nitrendipine</b>	L-type Ca channel blocker	$C_{18}H_{20}N_2O_6$	39562-70-4	SIH-320
<b>(R, S)-Niguldipine HCl</b>	Ca <sup>2+</sup> channel blocker	$C_{36}H_{39}N_3O_6 \cdot HCl$	119934-51-9	SIH-319
<b>Pinacidil Monohydrate</b>	K+ channel activator	$C_{13}H_{19}N_5 \cdot H_2O$	85371-64-8	SIH-563
<b>Verapamil HCl</b>	L-type Ca channel blocker	$C_{27}H_{38}N_2O_4 \cdot HCl$	152-11-4	SIH-308