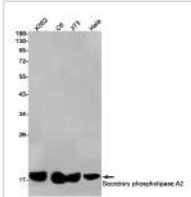
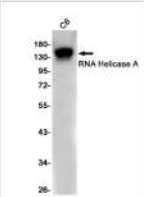


**RNA Helicase A Rabbit mAb #52556**  
Western blot detection of RNA Helicase A in C6 cell lysates using RNA Helicase A Rabbit mAb (1:1000 diluted). Predicted band size: 141kDa. Observed band size: 141kDa.



**Secretory Phospholipase A2 Rabbit mAb #52568**  
Western blot detection of Secretory phospholipase A2 in K562.C6.3T2.Hela cell lysates using Secretory phospholipase A2 Rabbit mAb (1:1000 diluted). Predicted band size: 16kDa. Observed band size: 16kDa.



**SNRPD3 Rabbit mAb #52586**  
Western blot detection of SNRPD3 in C6 Hela cell lysates using SNRPD3 Rabbit mAb (1:1000 diluted). Predicted band size: 14kDa. Observed band size: 14kDa.

Product No.	Product Name	Application
52556	RNA Helicase A Rabbit mAb	WB
52568	Secretory Phospholipase A2 Rabbit mAb	WB
52586	SNRPD3 Rabbit mAb	WB
52616	Transcriptional Enhancer Factor TEF Rabbit mAb	WB
52625	Thrombopoietin Receptor Rabbit pAb	WB
52669	SF3A3 Rabbit mAb	WB
52676	IFRD1 Rabbit mAb	WB
52677	NEDD4 Rabbit mAb	WB
52678	RBM43 Rabbit mAb	WB
52680	SF20 Rabbit mAb	WB
52682	NUP62CL Rabbit mAb	WB
52683	RASGRP1 Rabbit mAb	WB
52684	NOXA Rabbit mAb	WB
52704	Phospho-Src (Tyr530) Rabbit mAb	WB
52715	Actin Related Protein 2 Rabbit pAb	WB
52719	BarX1 Rabbit mAb	WB

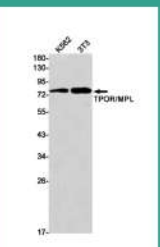


**MCM3 Rabbit mAb #52007**  
Immunohistochemistry of MCM3 in paraffin-embedded Human tonsil using MCM3 Rabbit mAb at dilution 1/1.

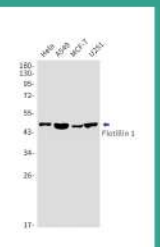


**MCM3 Rabbit mAb #52007**  
Immunofluorescence of MCM3 (green) in HeLa cells using MCM3 Rabbit mAb at dilution 1/200, and DAPI (blue).

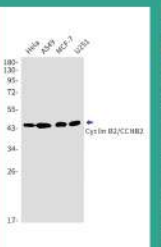
No.	Name	Application
52760	FKBP6 Rabbit mAb	WB
52775	HLF Rabbit mAb	WB
52832	P2Y12 Rabbit mAb	WB
52853	RhoGDI Rabbit mAb	WB
52861	SLC31A1 Rabbit mAb	WB
52882	Ubiquitin Conjugating Enzyme E2 N Rabbit mAb	WB



**Thrombopoietin Receptor Rabbit pAb #52625**  
Western blot detection of TPOR/MPL in K562.C6 cell lysates using TPOR/MPL Rabbit mAb (1:1000 diluted). Predicted band size: 71kDa. Observed band size: 69kDa.



**Flotillin 1 Rabbit mAb #52761**  
Western blot detection of Flotillin 1 in HeLa/AS49/MCF-7/293T cell lysates using Flotillin 1 Rabbit mAb (1:1000 diluted). Predicted band size: 47kDa. Observed band size: 46kDa.



**Cyclin B2 Rabbit mAb #52746**  
Western blot detection of Cyclin B2/CCNB2 in HeLa/AS49/MCF-7/293T cell lysates using Cyclin B2/CCNB2 Rabbit mAb (1:1000 diluted). Predicted band size: 45kDa. Observed band size: 45kDa.

**Contact**  
6305 Ivy Lane, 3rd Floor, Greenbelt, Maryland 20770, USA  
Tel: 1-301-446-2499  
Fax: 1-301-446-2413  
info@signalwayantibody.com

**Support**  
Web: [www.sabbiotech.com](http://www.sabbiotech.com)  
E-mail: [tech@signalwayantibody.com](mailto:tech@signalwayantibody.com)



**SAB**<sup>®</sup>  
Signalway Antibody  
**SINCE 2003**

# Recombinant Rabbit Monoclonal Antibodies

Top Recombinant Antibodies

[www.sabbiotech.com](http://www.sabbiotech.com)