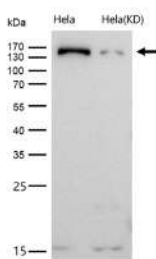


PRD Rabbit mAb #60210

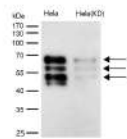
All lanes use the Antibody at 1:1K dilution for 1 hour at room temperature.



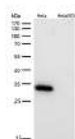
NUP155 Rabbit mAb #60227

All lanes use the Antibody at 1:1K dilution for 1 hour at room temperature.

No.	Name	Application
56224	AMBP Rabbit mAb	WB IHC
56225	Grp75 Rabbit mAb	WB
56272	EEF2 Rabbit mAb	WB IHC ICC/IF IP FC
56295	CD166 Rabbit mAb	WB IHC ICC/IF IP FC
56377	Alkaline phosphatase Rabbit mAb	WB IHC
56401	ABHD5 Rabbit mAb	WB IHC FC
56446	eIF4A1 Rabbit mAb	WB ICC/IF FC
56478	CLASP1 Rabbit mAb	WB IHC ICC/IF FC
56493	BMP6 Rabbit mAb	WB IHC ICC/IF FC
56525	AP2S1 Rabbit mAb	WB IP FC
56528	COPS3 Rabbit mAb	WB ICC/IF IP FC
56533	Calpain small subunit 1 Rabbit mAb	WB IHC ICC FC

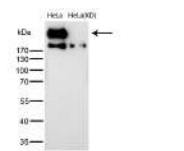


BIN1 Rabbit mAb #60262

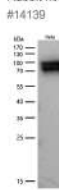


Caspase 3 Rabbit mAb #60265

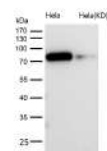
No.	Name	Application
14235	STAT3 (Phospho-Tyr705) Rabbit mAb	WB IHC ICC/IF IP
14236	GSK3α/β(Phospho-Tyr216/Tyr279) Rabbit mAb	WB IHC ICC/IF IP
14237	GSK3β(Phospho-Ser9) Rabbit mAb	WB IHC ICC/IF
14278	eIF4B (Phospho-Ser406) Rabbit mAb	WB IHC
14283	PBK/TOPK (Phospho-Thr9) Rabbit mAb	WB IHC
56019	GM130 Rabbit mAb	WB IHC ICC/IF IP
56022	GRP78 BIP Rabbit mAb	WB IHC
56035	ErbB2 (HER2) Rabbit mAb	WB IHC ICC/IF IP FC
56068	RUNX1/RUNX2/RUNX3 Rabbit mAb	WB IHC ICC/IF IP FC
56077	ERK1/2 Rabbit mAb	WB ICC/IF IP FC



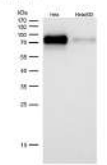
DNA PKcs (Phospho-Ser2056) Rabbit mAb #14139



RSK1 (Phospho-Ser380) Rabbit mAb #14173



Src (Phospho-Tyr419) Rabbit mAb #14159



Raf1 (Phospho-Ser621) Rabbit mAb #14227

Contact

6305 Ivy Lane, Suite 370, Greenbelt, Maryland 20770, USA
 Tel: 1-301-446-2499
 Fax: 1-301-446-2413
 info@signalwayantibody.com

Support

Web: www.sabbiotech.com
 E-mail: tech@signalwayantibody.com



SINCE 2003



**High Specific KD/KO
Validated Antibodies**

www.sabbiotech.com