

## About Us

Signalway Antibody is located in Greenbelt, Maryland 20770, USA.

Signalway is devoted to serve life scientists with high quality products and technical support. Our products include antibodies, proteins, ELISA kits, and so on for life science companies, universities and research institutes around the world. Currently our products cover cell signal transduction, cancer, stem cell, neuroscience and other research areas.



Signalway Antibody

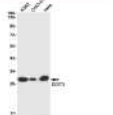


## Recombinant Monoclonal Antibodies



### No. Name

52103	Ferritin Heavy Chain Rabbit mAb
52136	alpha Actinin 4 Rabbit mAb
52192	Catalase Rabbit mAb
52266	ENO3 Rabbit mAb
52328	HDAC2 Rabbit mAb
52348	Hsp70 1B Rabbit mAb
52351	Hsp90 alpha/beta Rabbit mAb
52353	Ixv1 Rabbit mAb
52385	KIFC1 Rabbit mAb
52403	Macro H2A 1 Rabbit mAb
52406	MIC2A Rabbit mAb
52412	MEF2A Rabbit mAb
52414	c-Met Rabbit mAb
52411	Mw11 Rabbit mAb
52448	NCK2 Rabbit mAb
52461	MF1alpha B p100 Rabbit mAb
52470	NR1D1 Rabbit mAb
52471	Nr1 Rabbit mAb



**DDIT3 Rabbit mAb**  
Western blot detection of DDIT3 in ES2, CHO K1 and HeLa cell lysates using DDIT3 Rabbit mAb(1:1000 diluted). Predicted band size 19kDa. Observed band size 27kDa. #52103.



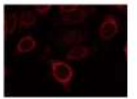
**ATGAC Rabbit mAb**  
Immunohistochemistry of ATGAC in paraffin-embedded human lung cancer tissue using ATGAC Rabbit mAb at dilution 1/50. #52163.

## Phospho Antibodies



### No. Name

11222	4E-BP1(Phospho-Thr30) Antibody
11281	4E-BP1 (Phospho-Thr70) Antibody
11054	Akt (Phospho-Ser473) Antibody
11055	Akt (Phospho-Thr308) Antibody
11501	AKT1/AKT2/AKT3 (phospho-Tyr115/315/312) Antibody
11124	Akt2 (Phospho-Ser474) Antibody
11914	Akt1 (Phospho-Ser128) Antibody
11183	AMPKα1/AMPKα2/Phospho-Thr183/Thr172) Antibody
11174	AMPKα1 (Phospho-Ser496) Antibody
11301	GSK3α/β(Phospho-Tyr276/216) Antibody
11002	GSK3β (Phospho-Ser9) Antibody



**mTOR(Phospho-Ser2448) Antibody**  
Immunofluorescence staining of mammalian 3T3-L1 cells using mTOR(Phospho-Ser2448) Antibody #11221.

## KD/KO Validation

### No. Name

38798	AKT1S1 antibody/AKT1S1 antibody
48627	Integrin beta-1 Antibody
49742	Cullin 4a Antibody
49861	FoxO1a1 Antibody
48841	Cateleculin Antibody
40661	C10BP Polyclonal Antibody
11974	p70 S6 Kinase (Phospho-Thr389/412) Antibody
45098	STK6 Antibody
11054	Akt(Phospho-Ser473) Antibody
35571	CASP9 Antibody
11504	JNK1/JNK2/JNK3(Phospho-Thr183/Tyr185) Antibody

## ELISA Kits

### No. Name

EK1297	Human Alpha-fetoprotein ELISA Kit
EK2683	Human Protein AMBP ELISA Kit
EK2493	Human Endoglin ELISA Kit
EK2692	Human Hemiplexin ELISA Kit
EK2506	Human Alpha-methylcyst-Cox-lyase ELISA Kit
EK1293	Human Prostate-specific antigen ELISA Kit
EK1283	Human S-nucleotidase ELISA Kit
EK2028	Human Adiponectin ELISA Kit
EK4758	Human Cadherin-6 ELISA Kit
EK1003	Human CD166 antigen ELISA Kit
EK1011	Human Amphiregulin ELISA Kit

## Conjugated Antibodies

### Fluorescein Introduction

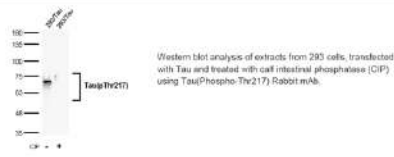
Fluorescein Conjugation	MOI (MOI)	Excitation (nm)	Emission (nm)	Excitation Source (nm)	Excitation Conjugation
AF350	346-442	UV			AMCA, DyLight 350
AF405	401-421	405			Cascade Blue, DyLight 405
AF488	483-519	488			ATTO640, Cy3, DyLight488, FAM, FITC, Fluorescein
AF555	555-565	532, 541, 546, 555, 568			ATTO550, Cy5, DyLight 568/FITC
AF594	591-614	532, 541, 546, 555, 568			ATTO590, DyLight 594, Texas Red, Cy5.5
AF647	651-667	633, 635, 640			ATTO 647N, Cy5, DyLight 649
AF680	679-702	680, 685			CAS, DyLight680, PEye 680LT
AF750	749-775	680, 685			Cy7, DyLight750, APC-AF 750, R dye 750

### No. Name

C12989-AF488	LAT (Phospho-Ser84) Conjugated Antibody
C12990-AF594	Doublecortin (Phospho-Ser332) Conjugated Antibody
C12993-AF594	AS160 (Phospho-Ser541) Conjugated Antibody
C12994-AF647	AS180 (Phospho-Ser570) Conjugated Antibody
C12997-AF488	TLRS (Phospho-Ser205) Conjugated Antibody
C12998-AF488	TLRS (Phospho-Ser205) Conjugated Antibody
C12999-AF350	CTNND1 (Phospho-Tyr248) Conjugated Antibody
C13000-AF350	CTNND1 (Phospho-Tyr250) Conjugated Antibody
C13001-AF405	CTNND1 (Phospho-Tyr96) Conjugated Antibody
C13001-AF488	PFKFB2 (Phospho-Ser32) Conjugated Antibody
C13005-AF647	RDCCK2 (Phospho-Ser1379) Conjugated Antibody
C13006-AF350	RDCCK2 (Phospho-Ser1385) Conjugated Antibody

**Recombinant Tau(Phospho-Thr217) Rabbit mAb(G122) #58004**

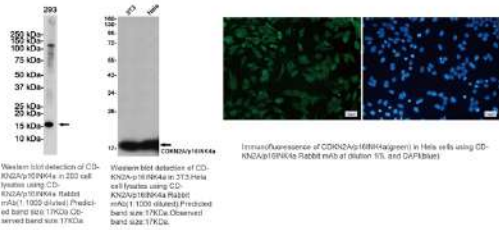
Application: WB,ELISA Species Reactivity: Hu Ms Rt



Product No.	Product Name	Application
52007	MCM3 Rabbit mAb	WB IHC IF
52259	E2F1 Rabbit mAb	WB IHC IF
52351	Hsp90 alpha/beta Rabbit mAb	WB IHC IF
52581	PACIN3 Rabbit mAb	WB IHC IF

**CDKN2A Rabbit mAb #52214**

Application: WB IF Species Reactivity: Human,Mouse



**GNB2 Rabbit mAb #52019**

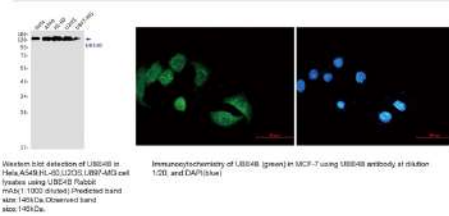
Application: WB IF Species Reactivity: Human,Mouse,Rat



Product No.	Product Name	Application
52125	AdSS 2 Rabbit mAb	WB IF
52220	c IAP1 Rabbit mAb	WB IF
52507	PIN1 Rabbit mAb	WB IHC
52528	Proteasome alpha 6 Rabbit mAb	WB IF
52598	Staufen Rabbit mAb	WB IHC
52628	TAX1BP1 Rabbit mAb	WB IHC
52885	IRF7 Rabbit mAb	WB IHC
52886	Surfeit Locus Protein 4 Rabbit mAb	WB IF
52871	RSK3 Rabbit mAb	WB IHC
52872	MST1 Rabbit mAb	WB IHC
52874	PIM1 Rabbit mAb	WB IHC
52875	NDUFB1 Rabbit mAb	WB IHC
52732	CARS Rabbit mAb	WB IHC
52788	Tyrosine Protein Kinase HCK Rabbit mAb	WB IF
52784	Insulin Degrading Enzyme Rabbit mAb	WB IF
52820	NgR3 Rabbit mAb	WB IF

**Ubiquitin Conjugation Factor E4 B Rabbit mAb #52883**

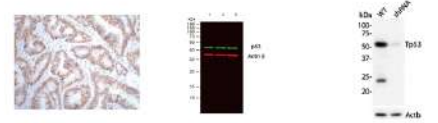
Application: WB IF Species Reactivity: Human,Mouse,Rat



Product No.	Product Name	Application
58001	Recombinant IL6 Rabbit mAb(G12)	WB,IHC,ELISA
52032	Asparagine Synthetase Rabbit mAb	WB IHC
52106	DDIT3 Rabbit mAb	WB IHC
52122	Activin A Receptor Type 1B Rabbit mAb	WB IF

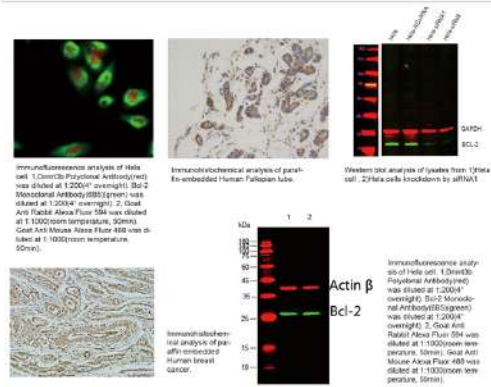
**p53 Mouse Monoclonal Antibody #38007**

Application: WB,IHC,IF Species Reactivity: Hu

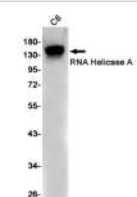


**Bcl-2 Monoclonal Antibody #40415**

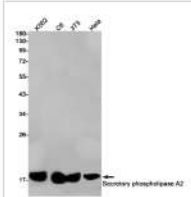
Application: WB IHC IF/ICC Species Reactivity: Human,Mouse,Rat



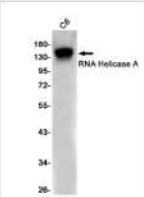
Product No.	Product Name	Application
52455	NEK4 Rabbit mAb	WB
52456	NF2 Rabbit mAb	WB
52478	NUR77 Rabbit mAb	WB
52517	POT1 Rabbit mAb	WB



**RNA Helicase A Rabbit mAb #52556**  
Western blot detection of RNA Helicase A in C6 cell lysates using RNA Helicase A Rabbit mAb (1:1000 diluted). Predicted band size: 141kDa. Observed band size: 141kDa.



**Secretory Phospholipase A2 Rabbit mAb #52568**  
Western blot detection of Secretory phospholipase A2 in K562.C6.3T2.Hela cell lysates using Secretory phospholipase A2 Rabbit mAb (1:1000 diluted). Predicted band size: 16kDa. Observed band size: 16kDa.

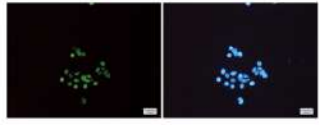


**SNRPD3 Rabbit mAb #52586**  
Western blot detection of SNRPD3 in C6 Hela cell lysates using SNRPD3 Rabbit mAb (1:1000 diluted). Predicted band size: 14kDa. Observed band size: 14kDa.

Product No.	Product Name	Application
52556	RNA Helicase A Rabbit mAb	WB
52568	Secretory Phospholipase A2 Rabbit mAb	WB
52586	SNRPD3 Rabbit mAb	WB
52616	Transcriptional Enhancer Factor TEF Rabbit mAb	WB
52625	Thrombopoietin Receptor Rabbit pAb	WB
52669	SF3A3 Rabbit mAb	WB
52676	IFRD1 Rabbit mAb	WB
52677	NEDD4 Rabbit mAb	WB
52678	RBM43 Rabbit mAb	WB
52680	SF20 Rabbit mAb	WB
52682	NUP62CL Rabbit mAb	WB
52683	RASGRP1 Rabbit mAb	WB
52684	NOXA Rabbit mAb	WB
52704	Phospho-Src (Tyr530) Rabbit mAb	WB
52715	Actin Related Protein 2 Rabbit pAb	WB
52719	BarX1 Rabbit mAb	WB

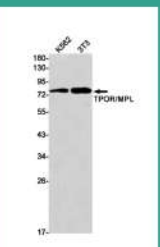


**MCM3 Rabbit mAb #52007**  
Immunohistochemistry of MCM3 in paraffin-embedded Human tonsil using MCM3 Rabbit mAb at dilution 1/1.

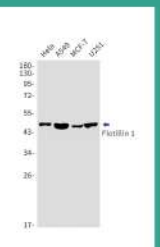


**MCM3 Rabbit mAb #52007**  
Immunofluorescence of MCM3 (green) in HeLa cells using MCM3 Rabbit mAb at dilution 1/200, and DAPI (blue).

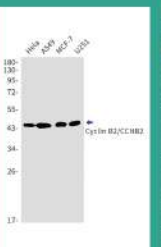
No.	Name	Application
52760	FKBP6 Rabbit mAb	WB
52775	HLF Rabbit mAb	WB
52832	P2Y12 Rabbit mAb	WB
52853	RhoGDI Rabbit mAb	WB
52861	SLC31A1 Rabbit mAb	WB
52882	Ubiquitin Conjugating Enzyme E2 N Rabbit mAb	WB



**Thrombopoietin Receptor Rabbit pAb #52625**  
Western blot detection of TPOR/MPL in K562.C6 cell lysates using TPOR/MPL Rabbit mAb (1:1000 diluted). Predicted band size: 71kDa. Observed band size: 85kDa.



**Flotillin 1 Rabbit mAb #52761**  
Western blot detection of Flotillin 1 in HeLa/AS49/MCF-7/293T cell lysates using Flotillin 1 Rabbit mAb (1:1000 diluted). Predicted band size: 47kDa. Observed band size: 48kDa.



**Cyclin B2 Rabbit mAb #52746**  
Western blot detection of Cyclin B2/CCNB2 in HeLa/AS49/MCF-7/293T cell lysates using Cyclin B2/CCNB2 Rabbit mAb (1:1000 diluted). Predicted band size: 45kDa. Observed band size: 45kDa.

**Contact**  
6305 Ivy Lane, 3rd Floor, Greenbelt, Maryland 20770, USA  
Tel: 1-301-446-2499  
Fax: 1-301-446-2413  
info@signalwayantibody.com

**Support**  
Web: [www.sabbiotech.com](http://www.sabbiotech.com)  
E-mail: [tech@signalwayantibody.com](mailto:tech@signalwayantibody.com)



**SAB<sup>®</sup>**  
Signalway Antibody  
**SINCE 2003**

# Recombinant Rabbit Monoclonal Antibodies

Top Recombinant Antibodies

[www.sabbiotech.com](http://www.sabbiotech.com)



## Metabolic

Cat.	Product Name	Sensitivity	Detect Range
EK12671	Rat Apolipoprotein A1 (APOA1) ELISA Kit	8.5ng/mL	23.4-1500ng/mL
EK12677	Human Apolipoprotein A4 (APOA4) ELISA Kit	1.7ng/mL	4.68-300ng/mL
EK12685	Rat Apolipoprotein B (APOB) ELISA Kit	11.3ng/mL	31.2-2000ng/mL
EK12715	Human Aquaporin 3, Gill Blood Group ELISA Kit	0.126ng/mL	0.312-20ng/mL
EK12720	Human Aquaporin 5 (AQP5) ELISA Kit	0.141ng/mL	0.312-20ng/mL
EK12721	Rat Aquaporin 5 (AQP5) ELISA Kit	0.062ng/mL	0.312-20ng/mL

## Apoptosis

Cat.	Product Name	Sensitivity	Detect Range
EK13001	Human Caspase Activated DNase (CAD) ELISA Kit	0.052ng/mL	0.156-10ng/mL
EK13032	Human Caspase-14 (CASP14) ELISA Kit	0.106ng/mL	0.312-20ng/mL
EK13033	Mouse Caspase 14 (CASP14) ELISA Kit	0.072ng/mL	0.312-20ng/mL
EK13034	Rat Caspase 14 (CASP14) ELISA Kit	0.103ng/mL	0.312-20ng/mL
EK13662	Rat Death Inducer Obliterator 1 (DIDOT) ELISA Kit	0.059ng/mL	0.156-10ng/mL
EK13932	Mouse Factor Related Apoptosis Ligand ELISA Kit	0.060ng/mL	0.156-10ng/mL

## Tumor Immunity

Cat.	Product Name	Sensitivity	Detect Range
EK12868	Human B-Lymphocyte Chemoattractant 1 ELISA Kit	5.8pg/mL	15.6-1000pg/mL
EK12869	Mouse B-Lymphocyte Chemoattractant 1 ELISA Kit	5.9pg/mL	15.6-1000pg/mL
EK12870	Rat B-Lymphocyte Chemoattractant 1 ELISA Kit	6.4pg/mL	15.6-1000pg/mL
EK12923	Human Betacellulin (bTC) ELISA Kit	0.064ng/mL	0.156-10ng/mL
EK12924	Mouse Betacellulin (bTC) ELISA Kit	7.3pg/mL	15.6-1000pg/mL
EK15313	Human Lymphotoxin Beta (LTβ) ELISA Kit	5.7pg/mL	15.6-1000pg/mL
EK15314	Mouse Lymphotoxin Beta (LTβ) ELISA Kit	5.8pg/mL	15.6-1000pg/mL
EK15316	Rat Lymphotoxin Beta (LTβ) ELISA Kit	6.2pg/mL	15.6-1000pg/mL
EK15375	Canine Monocyte Chemotactic Protein 1 ELISA Kit	0.058ng/mL	0.156-10ng/mL

www.sabbiotech.com

## Cytokine

Cat.	Product Name	Sensitivity	Detect Range
EK12727	Rat Amphiregulin (AREG) ELISA Kit	12.7pg/mL	31.2-2000pg/mL
EK13213	Human Cerberus (CER) ELISA Kit	12.3pg/mL	31.2-2000pg/mL
EK13491	Human Cardiotrophin 1 (CT1) ELISA Kit	5.6pg/mL	15.6-1000pg/mL
EK13492	Mouse Cardiotrophin 1 (CT1) ELISA Kit	6.2pg/mL	15.6-1000pg/mL
EK13493	Rat Cardiotrophin 1 (CT1) ELISA Kit	5.3pg/mL	15.6-1000pg/mL
EK13501	Rabbit Connective Tissue Growth Factor ELISA Kit	18.54pg/mL	46.8-3000pg/mL

## Signal Transduction

Cat.	Product Name	Sensitivity	Detect Range
EK12351	General 5-Hydroxytryptamine (5-HT) ELISA Kit	4.16ng/mL	15.6-1000ng/mL
EK12383	Human ATP Binding Cassette Transporter C6 ELISA Kit	0.126ng/mL	0.312-20ng/mL
EK12426	Human Activin A Receptor Type I (ACVR1) ELISA Kit	0.063ng/mL	0.156-10ng/mL
EK12477	Human Adrenergic Receptor Alpha 1A ELISA Kit	0.116ng/mL	0.312-20ng/mL
EK12699	Rat Apolipoprotein F (APOF) ELISA Kit	0.54ng/mL	1.56-100ng/mL
EK12717	Human Aquaporin 4 (AQP4) ELISA Kit	0.245ng/mL	0.625-40ng/mL

## Enzyme & Kinase

Cat.	Product Name	Sensitivity	Detect Range
EK12447	Rat Adenylate Cyclase 10, Soluble ELISA Kit	0.125ng/mL	0.312-20ng/mL
EK12454	Human Alcohol Dehydrogenase 1 (ADH1) ELISA Kit	0.72ng/mL	1.56-100ng/mL
EK12552	Rat Aldosterone Synthase (ALDOS) ELISA Kit	0.063ng/mL	0.156-10ng/mL
EK12552	Rat Aldosterone Synthase (ALDOS) ELISA Kit	0.063ng/mL	0.156-10ng/mL
EK12554	Human Alkaline Sphingomyelinase ELISA Kit	1.39ng/mL	3.12-200ng/mL
EK12555	Mouse Alkaline Sphingomyelinase ELISA Kit	0.051ng/mL	0.156-10ng/mL

## Infection Immunity

Cat.	Product Name	Sensitivity	Detect Range
EK12845	Canine Brain Derived Neurotrophic Factor ELISA Kit	0.055ng/mL	0.156-10ng/mL
EK12848	Human Brain Derived Neurotrophic Factor ELISA Kit	0.075ng/mL	0.156-10ng/mL
EK14188	Human Granulocyte Chemotactic Protein 2 ELISA Kit	12.6pg/mL	31.2-2000pg/mL
EK14638	Bovine Interferon Alpha (IFNα) ELISA Kit	5.9pg/mL	15.6-1000pg/mL
EK14639	Canine Interferon Alpha (IFNα) ELISA Kit	5.3pg/mL	15.6-1000pg/mL
EK14641	Human Interferon Alpha (IFNα) ELISA Kit	3.0pg/mL	7.81-500pg/mL

## Endocrinology

Cat.	Product Name	Sensitivity	Detect Range
EK12505	General Advanced Glycation End Product ELISA Kit	44ng/mL	125-8000ng/mL
EK12654	Human Apelin 12 (AP12) ELISA Kit	25.16pg/mL	93.7-6000pg/mL
EK13621	General 1-Desamino 8D Arginine Vasopressin ELISA Kit	0.039ng/mL	0.156-10ng/mL
EK14453	Human High Density Lipoprotein (HDL) ELISA Kit	42.35ng/mL	93.7-6000ng/mL
EK14455	Rat High Density Lipoprotein (HDL) ELISA Kit	1.39ng/mL	3.12-200ng/mL
EK16197	Human Paraoxonase 1 (PON1) ELISA Kit	1.44ng/mL	3.12-200ng/mL

## Neuro Science

Cat.	Product Name	Sensitivity	Detect Range
EK13329	Rabbit Ciliary Neurotrophic Factor (CNTF) ELISA Kit	11.8pg/mL	31.2-2000pg/mL
EK14195	Human Growth Differentiation Factor 11 ELISA Kit	5.5pg/mL	15.6-1000pg/mL
EK14196	Mouse Growth Differentiation Factor 11 ELISA Kit	1.39pg/mL	3.12-200pg/mL
EK14197	Rat Growth Differentiation Factor 11 ELISA Kit	5.8pg/mL	15.6-1000pg/mL
EK14200	Human Growth Differentiation Factor 1 ELISA Kit	10.2pg/mL	31.2-2000pg/mL
EK14201	Mouse Growth Differentiation Factor 1 ELISA Kit	12.1pg/mL	31.2-2000pg/mL



## Rheumatology

Cat.	Product Name	Sensitivity	Detect Range
EK13535	Human Chemokine C-X3-C-Motif Ligand 1 ELISA Kit	0.053ng/mL	0.156-10ng/mL
EK13536	Mouse Chemokine C-X3-C-Motif Ligand 1 ELISA Kit	0.060ng/mL	0.156-10ng/mL
EK13537	Rat Chemokine C-X3-C-Motif Ligand 1 ELISA Kit	0.061ng/mL	0.156-10ng/mL
EK14739	Mouse Interleukin 11 (IL11) ELISA Kit	7.1pg/mL	15.6-1000pg/mL
EK14740	Rat Interleukin 11 (IL11) ELISA Kit	5.8pg/mL	15.6-1000pg/mL

## Developmental Science

Cat.	Product Name	Sensitivity	Detect Range
EK15267	Human Activating Transcription Factor 4 ELISA Kit	0.057ng/mL	0.156-10ng/mL
EK15320	Mouse Activating Transcription Factor 6 ELISA Kit	0.113ng/mL	0.312-20ng/mL
EK13693	Bovine Deoxyribonuclease I (DNASE1) ELISA Kit	0.32ng/mL	0.781-50ng/mL
EK13694	Human Deoxyribonuclease I (DNASE1) ELISA Kit	0.65ng/mL	1.56-100ng/mL
EK13696	Mouse Deoxyribonuclease I (DNASE1) ELISA Kit	0.49ng/mL	1.25-80ng/mL
EK13817	Human Endonuclease G, Mitochondrial ELISA Kit	0.062ng/mL	0.156-10ng/mL

## Hematology

Cat.	Product Name	Sensitivity	Detect Range
EK14185	Human Glutamate Cysteine Ligase, Modifier Subunit	0.061ng/mL	0.156-10ng/mL
EK14186	Mouse Glutamate Cysteine Ligase, Modifier Subunit	0.063ng/mL	0.156-10ng/mL
EK14187	Rat Glutamate Cysteine Ligase, Modifier Subunit	0.052ng/mL	0.156-10ng/mL
EK15131	Human Prekallikrein (PK) ELISA Kit	0.64ng/mL	1.56-100ng/mL
EK16265	Human Protein C (PROC) ELISA Kit	0.54ng/mL	1.25-80ng/mL
EK16266	Mouse Protein C (PROC) ELISA Kit	14.1pg/mL	31.2-2000pg/mL

## Immune Molecule

Cat.	Product Name	Sensitivity	Detect Range
EK14749	Bovine Interleukin 12B (IL12B) ELISA Kit	11.8pg/mL	31.2-2000pg/mL
EK14750	Canine Interleukin 12B (IL12B) ELISA Kit	6.65pg/mL	15.6-1000pg/mL
EK14752	Equine Interleukin 12B (IL12B) ELISA Kit	12.5pg/mL	31.2-2000pg/mL
EK14755	Human Interleukin 12B (IL12B) ELISA Kit	11.84pg/mL	31.2-2000pg/mL



## CD& Adhesion Molecule

Cat.	Product Name	Sensitivity	Detect Range
EK13002	Human Cell Adhesion Molecule 1 (CADM1) ELISA Kit	0.063ng/mL	0.156-10ng/mL
EK13123	Human Cluster Of Differentiation 14 (CD14) ELISA Kit	3.3ng/mL	9.37-600ng/mL
EK13124	Mouse Cluster Of Differentiation 14 (CD14) ELISA Kit	0.72ng/mL	1.56-100ng/mL
EK13126	Rat Cluster Of Differentiation 14 (CD14) ELISA Kit	0.51ng/mL	1.56-100ng/mL
EK13129	Mouse Cluster Of Differentiation (CD163) ELISA Kit	25ng/mL	78.1-5000ng/mL
EK13145	Mouse Cluster Of Differentiation 34 (CD34) ELISA Kit	0.061ng/mL	0.156-10ng/mL

## Cardiovascular Biology

Cat.	Product Name	Sensitivity	Detect Range
EK16265	Human Protein C (PROC) ELISA Kit	0.54ng/mL	1.25-80ng/mL
EK16266	Mouse Protein C (PROC) ELISA Kit	14.1pg/mL	31.2-2000pg/mL
EK16267	Rat Protein C (PROC) ELISA Kit	0.42ng/mL	1.56-100ng/mL
EK13145	Mouse Cluster Of Differentiation 34 (CD34) ELISA Kit	0.061ng/mL	0.156-10ng/mL

## EXOSOMES

Cat.	Product Name	Sensitivity	Detect Range
EK17139	Human Tetraspanin 30 (TSPAN30) ELISA Kit	0.058ng/mL	0.156-10ng/mL
EK17140	Mouse Tetraspanin 30 (TSPAN30) ELISA Kit	0.064ng/mL	0.156-10ng/mL
EK14567	Human Heat Shock 60kD Protein 1, Chaperonin ELISA Kit	0.063ng/mL	0.156-10ng/mL
EK14588	Mouse Heat Shock 60kD Protein 1, Chaperonin ELISA Kit	0.11ng/mL	0.234-15ng/mL
EK14589	Rat Heat Shock 60kD Protein 1, Chaperonin ELISA Kit	1.27ng/mL	3.12-200ng/mL
EK14565	Human Heat Shock 70kDa Protein 5 (HSPA5) ELISA Kit	0.117ng/mL	0.312-20ng/mL
EK14566	Mouse Heat Shock 70kDa Protein 5 (HSPA5) ELISA Kit	0.054ng/mL	0.156-10ng/mL
EK14567	Rat Heat Shock 70kDa Protein 5 (HSPA5) ELISA Kit	0.27ng/mL	0.781-50ng/mL
EK13120	Human Chaperonin Containing TCP1, Subunit: 2 ELISA Kit	0.067ng/mL	0.156-10ng/mL



SINCE 2003

# ELISA Kits

www.sabbiotech.com

## Product Content

<a href="#">Cytokine</a>	<a href="#">Bone Metabolism</a>
<a href="#">Signal Transduction</a>	<a href="#">Endocrinology</a>
<a href="#">Enzyme &amp; Kinase</a>	<a href="#">Hepatology</a>
<a href="#">Metabolic Pathway</a>	<a href="#">Developmental Science</a>
<a href="#">Apoptosis</a>	<a href="#">Gastroenterology</a>
<a href="#">Tumor Immunity</a>	<a href="#">Dermatology</a>
<a href="#">Cardiovascular Biology</a>	<a href="#">Hormone Metabolism</a>
<a href="#">Infection Immunity</a>	<a href="#">Otorhinolaryngology</a>
<a href="#">Adhesion Molecule</a>	<a href="#">Rheumatology</a>
<a href="#">Neuro Science</a>	<a href="#">Hematology</a>
<a href="#">Autoimmunity</a>	<a href="#">Reproductive Science</a>
<a href="#">Ophthalmology</a>	<a href="#">Exosomes</a>

## Signalway Antibody LLC

### Contact

Address: 6305 Ivy Lane, Suite 370, Greenbelt, Maryland 20770, USA

Tel: 1-301-446-2499

Fax: 1-301-446-2413

Email: info@signalwayantibody.com



# Phosphorylation Antibody Pioneer (SINCE 2003)

Founded in 2003, Signalway Antibody is a specialized enterprise dedicated to the research, development, and production of phosphorylation antibodies. Through continuous investment in R&D, our product portfolio now covers phosphorylated recombinant rabbit monoclonal antibodies, total antibodies, secondary antibodies, tag antibodies, recombinant proteins, conjugated antibodies, and ELISA kits. In 2026, we are offering the following best discounts. We would greatly appreciate your focused promotion of these products.

Product Category	Quantity	Distributor Discount Price
Phosphorylation Recombinant Rabbit Monoclonal Antibodies	400+	55% OFF
Recombinant Rabbit Monoclonal Antibodies	4446	57% OFF
Recombinant Proteins	8563	55% OFF
Flow Cytometry Antibodies	1685	50%
ELISA Kits	18178	55% OFF

## Signalway Antibody LLC.

Add.: 6305 Ivy Lane, 3rd Floor, Greenbelt, Maryland 20770, USA

Tel.: +1 (301) 446-2499 Fax.: +1 (301) 446-2413

Web.: [www.sabbiotech.com](http://www.sabbiotech.com)

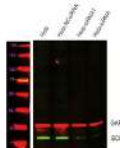
E-mail: [info@signalwayantibody.com](mailto:info@signalwayantibody.com)

## Introduction

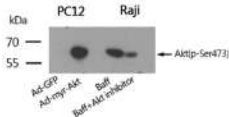
Antibody specificity refers to the ability of an antibody to bind to and only to its target antigen; this exclusivity requires high-level validation techniques, among which genetic verification is the best choice.

Among genetic approaches, gene knockout (KO) at the genomic level, and gene knockdown (KD) at the mRNA level using small interference RNA (siRNA) and short hairpin RNA (shRNA) techniques have been widely used for antibody validation. Knocking out a gene will lead to a complete ablation of its encoded protein, but for genes essential to cell survival knockout will be lethal.

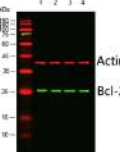
Using siRNA to knock down genes is cost-effective and less time-consuming, but the knockdown is transient in and of itself. Compared to KO and siRNA approach, shRNA KD offers the following benefits, 1) lentiviral shRNA can be stably integrated into a cell's genome and result in a more complete knockdown compared to siRNA; 2) It is particularly powerful for difficult-to-target and nondividing cells; 3) It knocks down rather than knocks out a gene, so it is particularly useful for the study of genes vital to cell survival.



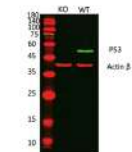
Bcl-2 Monoclonal Antibody #40415



Akt(Phospho-Ser473) Antibody #11054

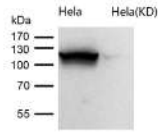


BCL2 Antibody #32012



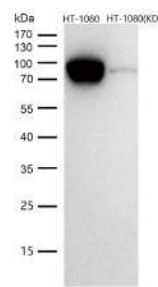
p53(Ab-15) Antibody #21085

No.	Name	Application
59965	CLSTN1 Rabbit mAb	WB IHC ICC/IF
59973	ATP1B3 Rabbit mAb	WB IHC
59979	MTH1 Rabbit mAb	WB IHC ICC/IF IP FC
59984	NEK7 Rabbit mAb	WB FC
59991	Legumain Rabbit mAb	WB
59992	HLTF Rabbit mAb	WB IHC ICC/IF
59993	IDH1 Rabbit mAb	WB IHC IP
59996	TXNRD2 Rabbit mAb	WB IHC
59997	TRAF6BP Rabbit mAb	WB ICC/IF
59998	PRKRA Rabbit mAb	WB IHC
60005	Poliovirus Receptor Rabbit mAb	WB IP
60011	STXBP1 Rabbit mAb	WB IHC ICC/IF



SERCA2 Rabbit mAb #59298

All lanes use the Antibody at 1:1K dilution for 1 hour at room temperature.



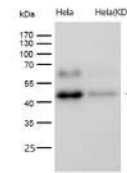
MCM7 Rabbit mAb #59558

All lanes use the Antibody at 1:1K dilution for 1 hour at room temperature.

CTCF Rabbit mAb #59329

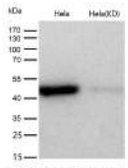
All lanes use the Antibody at 1:1K dilution for 1 hour at room temperature.

No.	Name	Application
60147	ACADS / SCAD Rabbit mAb	WB IHC IP
60149	KIF5B Rabbit mAb	WB IHC ICC/IF IP
60155	C3orf38 Rabbit mAb	WB
60156	TFSM Rabbit mAb	WB ICC/IF IP
60158	TRIM24 Rabbit mAb	WB IHC ICC/IF
60162	ACAT1 Rabbit mAb	WB IHC IP



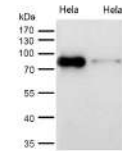
MAPK Kinase 2 Rabbit mAb

#59659



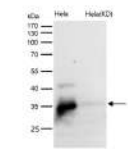
AdSS 2 Rabbit mAb

#60164



CSDE1 Rabbit mAb

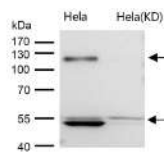
#60246



UCHL5IP Rabbit mAb

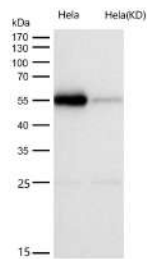
#60213

No.	Name	Application
60171	PCTAIRE1 Rabbit mAb	WB
60172	Mras Rabbit mAb	WB
60173	PPM1G Rabbit mAb	WB
60177	HNRNPM Rabbit mAb	WB IHC ICC/IF FC
60180	MDH2 Rabbit mAb	WB IHC
60181	AAAMP Rabbit mAb	WB ICC/IF FC
60186	PRMT7 Rabbit mAb	WB
60192	AER61 Rabbit mAb	WB
60193	MLD Rabbit mAb	WB
60195	TCEA1 Rabbit mAb	WB IHC ICC/IF IP FC
60196	PPM1G Rabbit mAb	WB IHC ICC/IF FC
60197	IQGAP2 Rabbit mAb	WB IHC



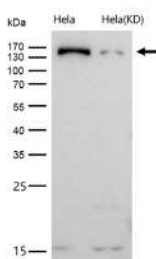
ORP1 Rabbit mAb #60074

All lanes use the Antibody at 1:1K dilution for 1 hour at room temperature.



**PRD Rabbit mAb #60210**

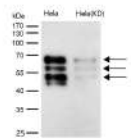
All lanes use the Antibody at 1:1K dilution for 1 hour at room temperature.



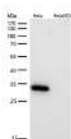
**NUP155 Rabbit mAb #60227**

All lanes use the Antibody at 1:1K dilution for 1 hour at room temperature.

No.	Name	Application
56224	AMBP Rabbit mAb	WB IHC
56225	Grp75 Rabbit mAb	WB
56272	EEF2 Rabbit mAb	WB IHC ICC/IF IP FC
56295	CD166 Rabbit mAb	WB IHC ICC/IF IP FC
56377	Alkaline phosphatase Rabbit mAb	WB IHC
56401	ABHD5 Rabbit mAb	WB IHC FC
56446	eIF4A1 Rabbit mAb	WB ICC/IF FC
56478	CLASP1 Rabbit mAb	WB IHC ICC/IF FC
56493	BMP6 Rabbit mAb	WB IHC ICC/IF FC
56525	AP2S1 Rabbit mAb	WB IP FC
56528	COPS3 Rabbit mAb	WB ICC/IF IP FC
56533	Calpain small subunit 1 Rabbit mAb	WB IHC ICC FC

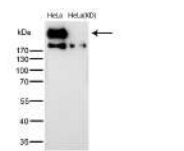


**BIN1 Rabbit mAb #60262**



**Caspase 3 Rabbit mAb #60265**

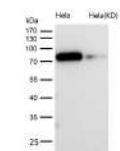
No.	Name	Application
14235	STAT3 (Phospho-Tyr705) Rabbit mAb	WB IHC ICC/IF IP
14236	GSK3α/β(Phospho-Tyr216/Tyr279) Rabbit mAb	WB IHC ICC/IF IP
14237	GSK3β(Phospho-Ser9) Rabbit mAb	WB IHC ICC/IF
14278	elF4B (Phospho-Ser406) Rabbit mAb	WB IHC
14283	PBK/TOPK (Phospho-Thr9) Rabbit mAb	WB IHC
56019	GM130 Rabbit mAb	WB IHC ICC/IF IP
56022	GRP78 BIP Rabbit mAb	WB IHC
56035	ErbB2 (HER2) Rabbit mAb	WB IHC ICC/IF IP FC
56068	RUNX1/RUNX2/RUNX3 Rabbit mAb	WB IHC ICC/IF IP FC
56077	ERK1/2 Rabbit mAb	WB ICC/IF IP FC



**DNA PKcs (Phospho-Ser2056) Rabbit mAb #14139**



**RSK1 (Phospho-Ser380) Rabbit mAb #14173**



**Src (Phospho-Tyr419) Rabbit mAb #14159**



**Raf1 (Phospho-Ser621) Rabbit mAb #14227**

**Contact**

6305 Ivy Lane, Suite 370, Greenbelt, Maryland 20770, USA  
 Tel: 1-301-446-2499  
 Fax: 1-301-446-2413  
 info@signalwayantibody.com

**Support**

Web: [www.sabbiotech.com](http://www.sabbiotech.com)  
 E-mail: [tech@signalwayantibody.com](mailto:tech@signalwayantibody.com)



**SINCE 2003**



**High Specific KD/KO  
Validated Antibodies**

[www.sabbiotech.com](http://www.sabbiotech.com)