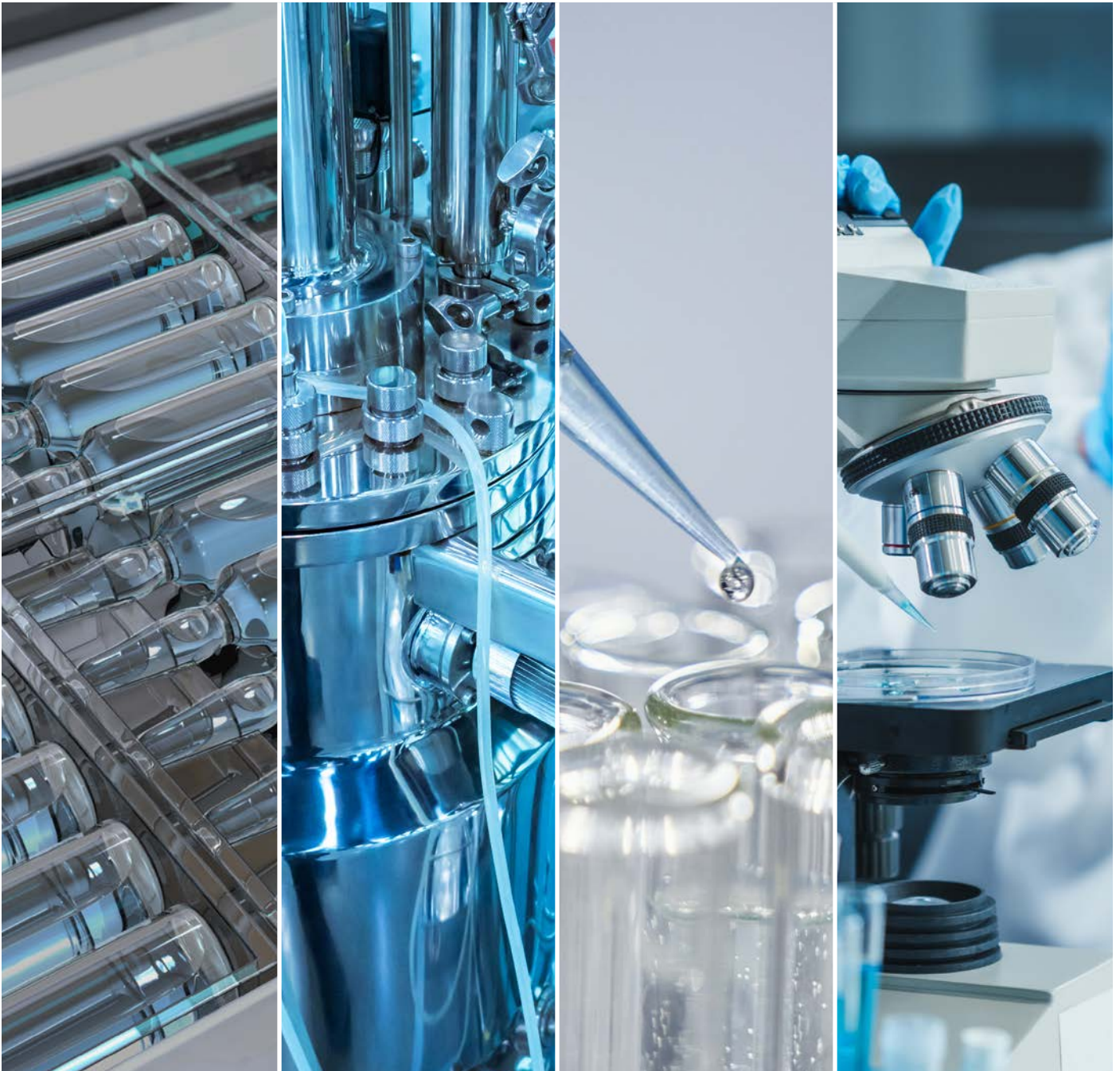




Condalab

Inspired by knowledge

INDUSTRIAL BIOPROCESSES



Index

01 03

Condalab

02 05

Industrial bioprocesses

03 06

Innovation and development

Start your process 06
Identify essential ingredients 09

04 11

Upstream

Microbial Fermentation 11
Cell culture 13

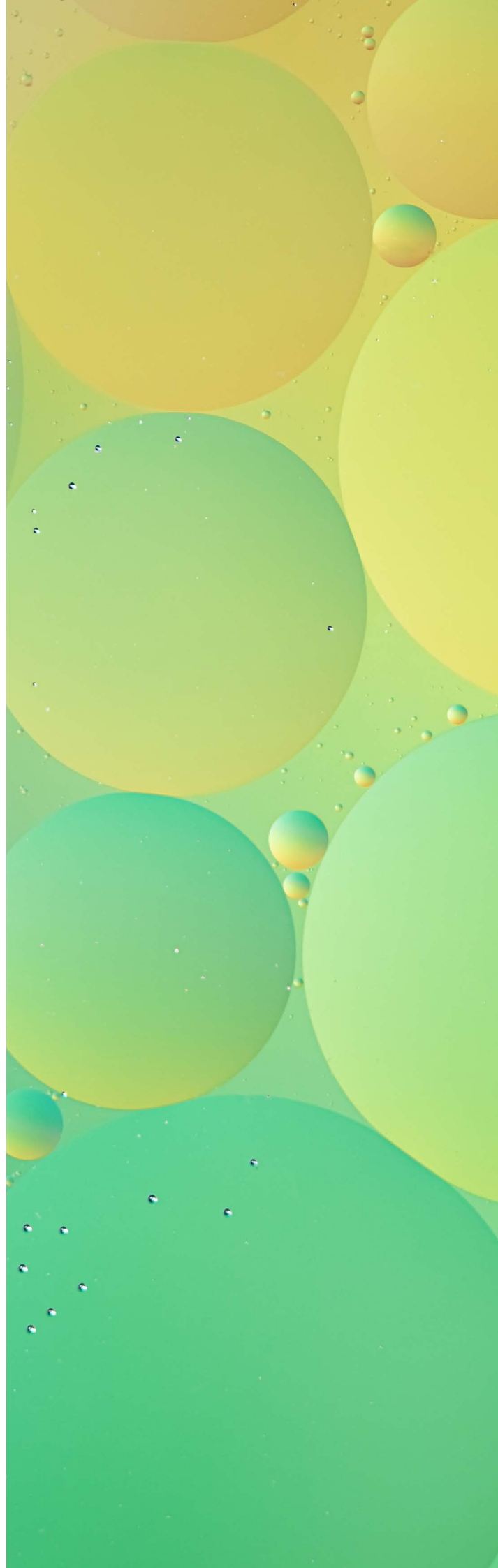
05 14

Process control

Environmental control, air and surfaces 14
Sterile products and media fill test 16

06 17

Annex



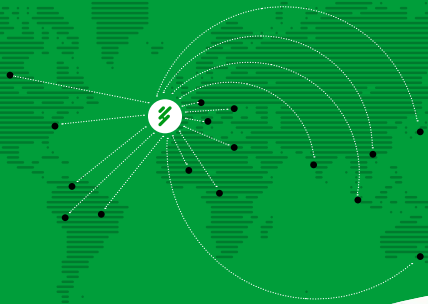
Who are we?

European leaders in the manufacture of culture media.

Founded in 1960, we are one of the leading manufacturers of dehydrated culture media for microbiology and molecular biology in Europe and have positioned ourselves as a leading private company in the international market.

From our factory located in Madrid, Spain we export to more than 130 countries worldwide directly or through an extensive network of authorized distributors.

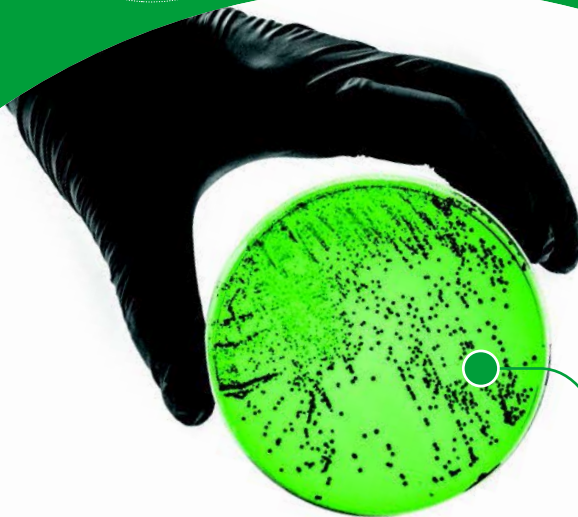
The key to success is our distribution channel, together with a professional team and the wide range of products we offer.



Experts.
Mastery of culture media.

Flexible and reliable.
Tailored to the needs of our customers.

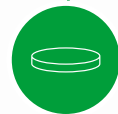
Innovative.
Inspiring the future.



What do we do?

Develop, manufacture and distribute high-quality culture media for microbiology and molecular biology.

The experience gained in the design and manufacture of culture media has made us specialists. We develop, produce and distribute culture media of the highest quality for microbiology and molecular biology with the design of more than 700 dehydrated media. Condalab is also known for providing key ingredients such as agar, peptones and agarose, among others. Our catalog also includes media for molecular biology.



Microbiology.

Dehydrated culture media
Prepared culture media
Supplements
Microbial sensitivity tests
Colorants
Condagene®



Molecular biology.

Dehydrated culture media
Agaroses
Dyes for molecular biology



Bioingredients.

Agaroses
Peptones
Carbohydrates

Who do we do it for?

We have an extensive network of clients as a result of active listening and the search for optimal solutions.

Condalab products target the following market niches:



Quality control.

Food and beverage industry, breweries, pharmaceutical industry and cosmetics industry.



Clinical analysis.

Hospitals, veterinary clinics, clinical and food control laboratories.



Production processes.

Fermentation processes, vaccines, probiotics and culture media manufacturers.



R+D.

Laboratories, research centers and universities.



How do we do it?

We opt for quality.

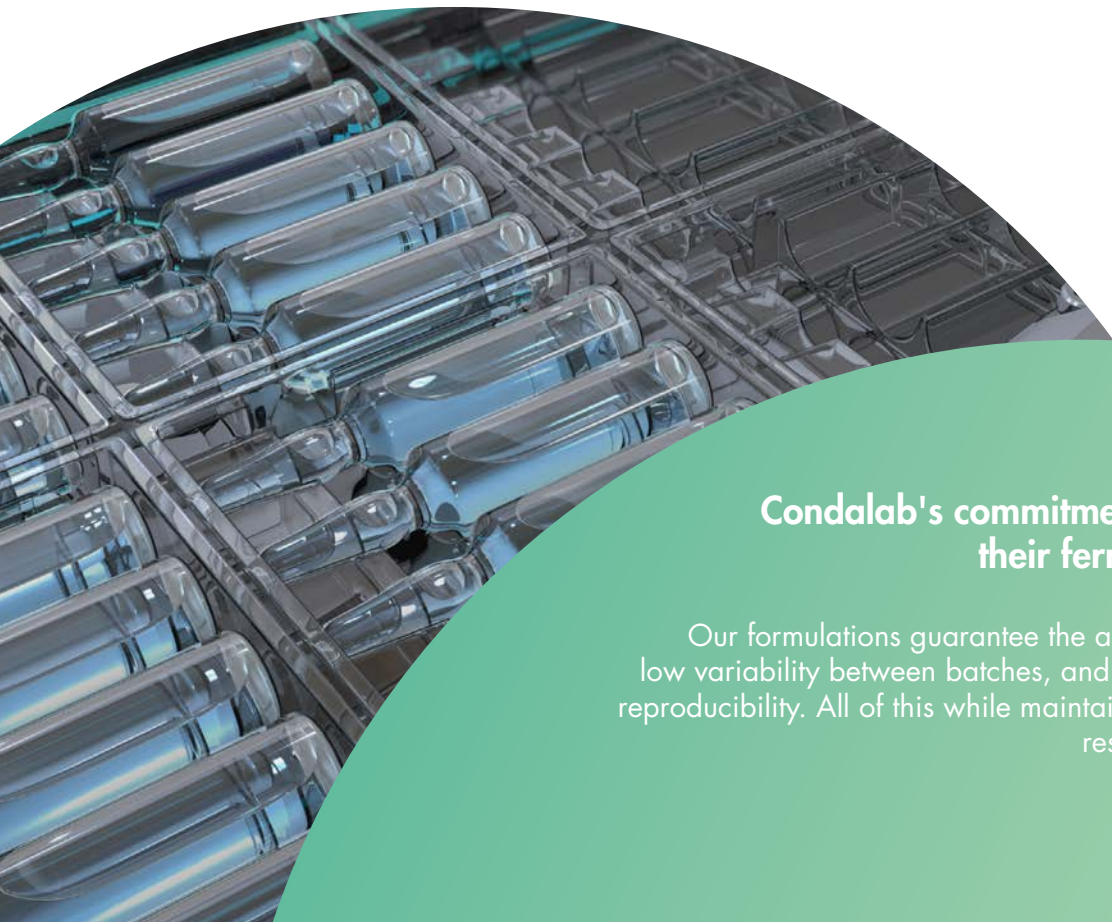
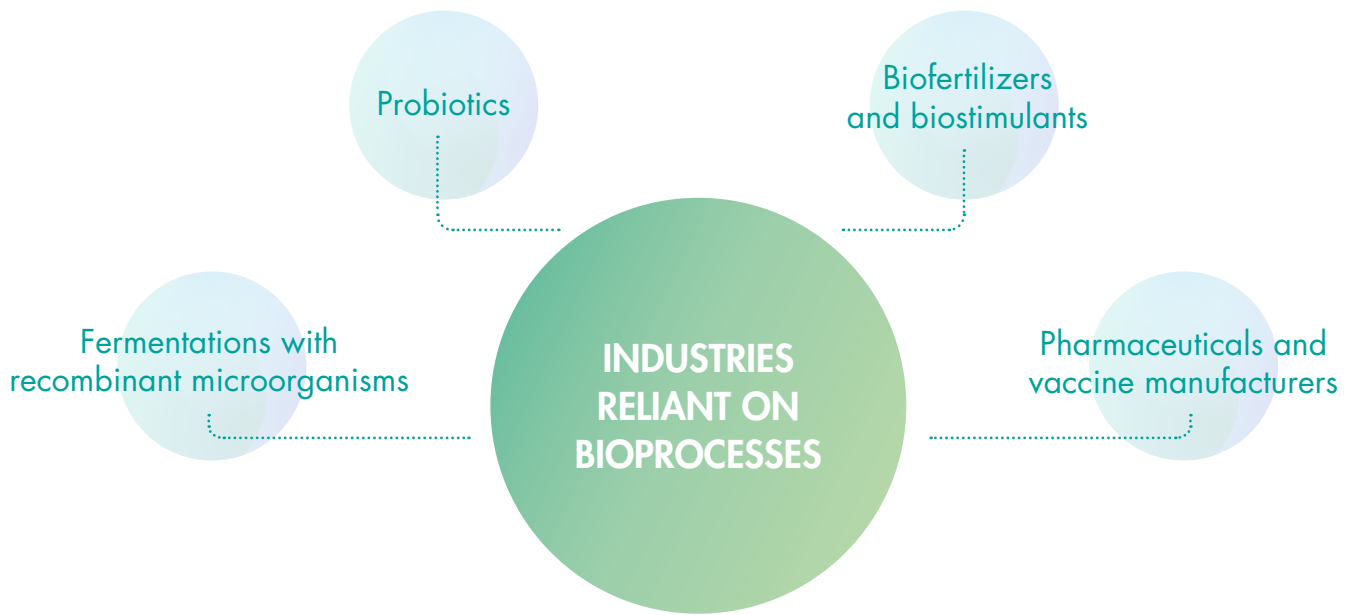
We continue to improve and increase our production to achieve the highest quality standards. We have ISO 9001:2015, ISO 13485:2018 and the CE mark for Invitro medical devices.

Our formulations meet the international standards of European Pharmacopoeia, FDA, APHA, USP and AOAC. We follow strict controls throughout production before, during and after each manufacturing process, to ensure quality and consistency from batch to batch.



INDUSTRIAL BIOPROCESSES

A bioprocess can be understood as the use of living cells or their components to obtain a product with high technological value.



Condalab's commitment to the quality of their fermentation products

Our formulations guarantee the absence of TSE and BSE, low variability between batches, and consistency to maintain reproducibility. All of this while maintaining a fast and efficient response for each project.

Condalab offers **specific solutions**, helping you achieve the **best results and guaranteed quality**.

At every stage of a bioprocess, biomass generation, the fermentation of active metabolites, the synthesis of biological drugs, or ensuring sterility in process control, Condalab provides **tailored solutions**, helping you achieve the **best results with guaranteed quality**.

INNOVATION AND DEVELOPMENT



Culture media and ingredients to start projects and the definition of your ideal formulation.



UPSTREAM

Peptones and extracts as optimization tools during manufacturing.



PROCESS CONTROL

Control media for the detection of contaminants in the final product.



INNOVATION AND DEVELOPMENT

START YOUR PROCESS



Every bioprocess begins with the design of a product that satisfies a specific need; achieving this requires starting with a research and development phase.

At Condalab, we have **multiple agars** available with different characteristics and applications; **specialized culture media** for the selection and recovery of competent cells; growth enhancers and **selective antibiotics**.

Select the competent cell

CAT	PRODUCT	FORMAT
1167	2xYT Agar	500 g
1083	LB Agar (Lennox)	500 g
2084	LB Agar (Lennox) with Ampicilin 100 µg/ml	500 g
2090	LB Agar with Kanamycin 50µg/ml (Lennox)	500 g
2039	Vegetable LB Agar (Lennox)	500 g
1552	Luria Agar (Miller's LB Agar)	500 g
1308	Luria Agar (Miller's Modification)	500 g
2085	Luria Agar with Ampicillin 100 µg/ml (Miller's LB Agar)	500 g
2086	Luria Agar with Ampicillin 50 µg/ml (Miller's LB Agar)	500 g
2091	Luria Agar with Kanamycin 50µg/ml (Miller's LB agar)	500 g
1432	sLB Agar	500 g
1546	YPD Agar	500 g
2095	AIM -Super Growth w/o Trace Element	500 g
1513	YP Agar Base Medium	500 g



Molecular Biology Media

CAT	PRODUCT	FORMAT
2072	Terrific Broth Base Autoinducible w/o Metals	500 g
1540	Induction Base Medium	500 g
1538	RM Base Medium	500 g
1511	YP Base Medium	500 g
1545	Yeast Nitrogen Base w/o Amino Acids	500 g
1553	Yeast Nitrogen Base w/o Added Aminoacids and w/o Ammonium Sulfate	500 g
1231	LB Broth (Lennox)	500 g
2114	LB Broth Autoinducible with Trace Element	500 g
2094	LB Broth Autoinducible w/o Trace Element	500 g
2038	Vegetable LB Broth (Lennox)	500 g
1551	Luria Broth (Miller's LB Broth)	500 g
1266	Luria Broth (Miller's Modification)	500 g
1549	NZCYM Broth	500 g
1163	sLB Broth	500 g
1199	sLB Broth (Buffered)	500 g
1246	Terrific Broth	500 g
1499	Terrific Broth (Non animal origin)	500 g
1547	YPD Broth	500 g
1507	2xYT Medium	500 g
2113	2YT Autoinducible with Trace Elements	500 g
2093	2YT Autoinducible Growth Medium w/o Trace Elements	500 g
2112	Super Growth Autoinducible with Trace Elements	500 g
1541	SOB Medium	500 g
2019	SOC Medium	500 g

Agaroses

CAT	PRODUCT	FORMAT
8024	Agarose D1 High EEO	100 g and 500 g
8010	Agarose D1 Low EEO	100 g and 500 g
8017	Agarose D1 Low EEO GQT	100 g and 500 g
8019	Agarose D1 Medium EEO	100 g and 500 g
8032	Agarose D2	100 g and 500 g
8045	Agarose D5	100 g and 500 g
8100	Agarose E	100 g and 500 g
8090	Agarose FP DNA	100 g and 500 g
8050	Agarose LM	100 g and 500 g
8091	Agarose LM GQT	100 g and 500 g
8092	Agarose LM Sieve	100 g and 500 g
8067	Agarose MS - 12	100 g and 500 g
8075	Agarose MS - 4	100 g and 500 g
8001	Agarose MS - 6 Metagel	100 g and 500 g
8065	Agarose MS - 8	100 g and 500 g

Identify essential ingredients

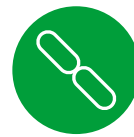
Our starter packs of media, peptones, and specialized extracts for every industry type are designed to streamline the selection and calibration process. They allow companies **to start their bioprocesses more quickly and efficiently.**

Starter Pack AGRI-FOOD



BIOFERTILIZERS

- Yeast Extract
Bioprocess Grade
- Tryptone
- Gelatin peptone
- Meat peptone



PROBIOTICS

- MRS broth
- Tryptone
- Casein peptone
- Yeast extract



Packs focused on main industries, with the best culture media and bioingredients for each application.

Starter Pack RECOMBINANT PROTEINS



RECOMBINANT E. COLI

- Terrific Broth
- Terrific Broth Base
Autoinducible w/o Metals
- LB Broth (Lennox)
- LB Broth Autoinducible
w/o Trace Elements



YEASTS

- YPD broth
- Broth for fungi and yeasts
- Yeast Mold Broth
- Malt extract
- Yeast extract
- Gelatin peptone



E. COLI ANIMAL-FREE

- Terrific Broth
(Non animal origin)
- Vegetable LB Broth (Lennox)
- Yeast extract
- Soy peptone GMO-Free
and Animal-Free

Starter Pack BIOPHARMACEUTICALS AND VACCINES



VACCINES

- Proteose peptone
- Polypeptone
- Proteose peptone No. 3
- Meat extract
- Casein peptone



ANIMAL-FREE VACCINES

- Yeast extract
Biotechnological grade
- Soy Peptone GMO-free
and Animal-Free

CondaLow®

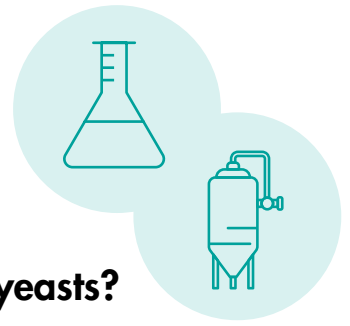
CELL CULTURE

- CondaLow® soy peptone
- CondaLow® meat peptone
- CondaLow® casein peptone
- CondaLow® wheat peptone



UPSTREAM

MAXIMIZE PRODUCTION



**Will you be working with microorganisms like bacteria and yeasts?
Or will mammalian cell lines be used?
Each system has its advantages and disadvantages, which are adapted
to meet the requirements for synthesizing the relevant product.**

That is why at Condalab we offer specialized ingredients in microbial fermentations and cell cultures.

Microbial Fermentation

Hydrolysates are a rich source of nutrients that stimulate the growth and metabolism of microorganisms, providing the best yields and the ability to formulate specific conditions for each bioprocess.

BIOINGREDIENTS	EXTRACTION	AMINO ACIDS	PEPTIDES	OTHER: VITAMINS, GF
PEPTONES	Hydrolysis	+++	+	-
EXTRACTS	Purification	++	++	+
INFUSIONS	Temperature	++	++	++

Peptones as the main source of nitrogen, stimulating the synthesis of active compounds.

Extracts as growth enhancers.

Infusions for the cultivation of complicated microorganisms.



Ingredients

CAT	PRODUCT	FORMAT
1637	CondaLow® Meat Peptone	500 g
1636	CondaLow® Casein Peptone	500 g
1618	CondaLow® Soy Peptone	500 g
1638	CondaLow® Wheat Peptone	500 g
1700	Beef extract	500 g
1702	Yeast extract	500 g
1721	Yeast Extract Bioprocess Grade	500 g
1736	Yeast extract No. 2	500 g
1708	Malt extract	500 g
1738	Yeast Extract Probiotic Grade	500 g
1626	Lactalbumin Hydrolyzed	500 g
1712	Pork Brain Heart Infusion	500 g
1714	Bovine Heart Infusion	500 g
1716	Pork Heart Infusion	500 g
1616	Bacteriological Peptone	500 g
1600	Meat Peptone	500 g
1624	Pork Meat Peptone	500 g
1602	Casein peptone	500 g
1604	Acid Casein Peptone	500 g
1603	Casein CC Peptone	500 g
1635	HALAL Casein Peptone	500 g
1606	Gelatin Peptone	500 g
1703	Liver Peptone	500 g
1615	Soy Peptone GMO-Free and Animal-Free	500 g
1627	Soy Peptone GMO-Free and Animal-Free N2	500 g
1610	Polypeptone	500 g
1609	Proteose peptone	500 g
1607	Proteose Peptone No. 3	500 g
1612	Tryptone	500 g
1614	Tryptose	500 g

Culture media

Formulated culture media offer the advantage of being more straightforward to use than separate ingredients, as they have been mixed and homogenized following Condalab's quality standards.

CAT NO.	DESCRIPTION	Microorganism for use	FORMAT
1262	PPLO Broth Base Without Crystal Violet	<i>Mycoplasma</i>	500 g
2072	Terrific Broth Base Autoinducible w/o Metals	<i>Escherichia coli</i>	500 g
1223	Brucella broth	<i>Brucella spp</i>	500 g
1416	Differential Reinforced Clostridium Broth	<i>Clostridium spp</i>	500 g
1245	Malt Extract Broth	Yeasts	500 g
1400	Brain Heart Infusion Broth (BHI Broth)	Vaccines from complicated microorganisms	500 g
2094	LB Broth Autoinducible w/o Trace Element	<i>Escherichia coli</i>	500 g
1499	Terrific Broth (Lennox)	<i>Escherichia coli</i>	500 g
1231	LB Broth (Lennox)	<i>Escherichia coli</i>	500 g
1215	MRS Broth	<i>Lactobacillus spp</i>	500 g
2008	Yeast Mold Broth	<i>Fungi and yeasts</i>	500 g
1224	Trypticasein Soy Broth (TSB) EP/USP/ISO	General use in aerobes	500 g
1246	Terrific Broth	<i>Escherichia coli</i>	500 g
2038	Terrific Broth LB Broth (Lennox)	<i>Escherichia coli</i>	500 g
1547	YPD Broth	Yeasts	500 g

Cell culture

Our knowledge of bioingredients has guided us in the development of a new product line. The CondaLow® ingredient line consists of peptones with low levels of endotoxins without using aggressive methods that compromise their nutritional value, such as ultrafiltration. **They are ideal for supplementing media intended for cell lines such as CHO, HEK, and BHK-21.** Used in the pharmaceutical industry for the production of biological drugs and viral vaccines.

Our line of peptones for your cell cultures.



CondaLow® Meat peptone



CondaLow® Soy Peptone



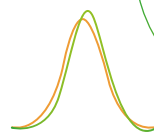
CondaLow® Casein Peptone



CondaLow® Wheat Peptone



Low endotoxin level (<200 EU/g)



Low variability



Preservation of growth factors



Stimulation of growth and production

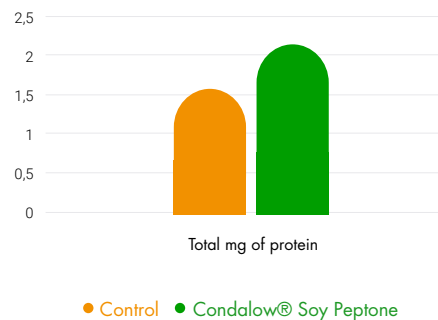


CondaLow® peptones act as supplements in cell culture, with the ability to stimulate cell growth, promote the synthesis of high-value technological products, and reduce dependency on other supplements such as fetal bovine serum.

Increase in monoclonal antibody production.

The addition of low concentrations of low-endotoxin peptones has shown an increase of up to **30% in the synthesis of monoclonal antibodies** in CHO cell cultures, a reference method in the production of biologic drugs.

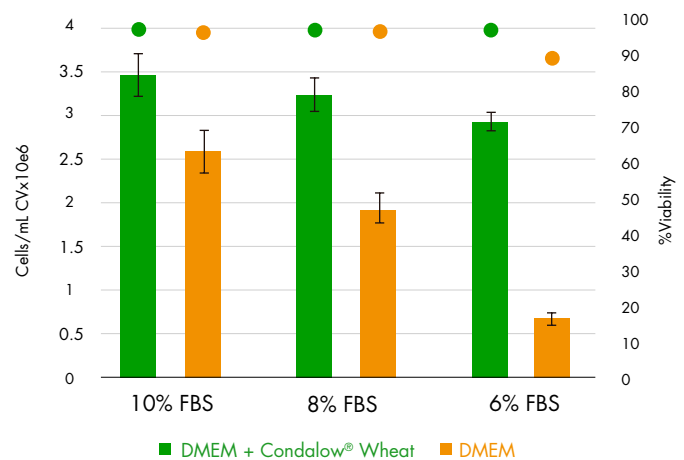
CondaLow® Soy vs. Control IgG Production



Reduction of fetal bovine serum.

Its use also reduces dependence on serum, maintaining optimal cell densities even after **reducing the serum amount by up to 40%.**

Reduction of FBS in HEK293-T cells with CondaLow® Wheat



The use of CondaLow® peptones increases production yields while reducing the use of other more complex and expensive supplements. They also create a buffer effect that protects the structure of products generated with a protein base.



PROCESS CONTROL



Ensuring the quality and safety of the final products of a bioprocess is essential, as it can jeopardize both the work performed during production and industrial scaling operations. To do this, it is necessary to establish relevant analytical methods to certify the safety of the products.

Environmental control, air and surfaces

Ensuring the quality of the bioprocess does not only include the production stages and final product control, but also includes the environment where it takes place. To do this, an environmental sampling and monitoring plan must be established, covering production areas, storage, water tanks, and any critical points of the process. Environmental control, in addition to minimizing the risk of contamination in the final product, helps to improve the overall performance of the bioprocess.



Environmental control helps to improve the overall performance of the bioprocess.



90 mm plates (Petri dishes)

Irradiated plates with double or triple wrapping for air monitoring by sedimentation in stringent areas such as clean rooms.

CAT	PRODUCT	FORMAT
908	Sabouraud Dextrose Agar with Chloramphenicol EP/USP/ISO	20 plates
843	Sabouraud Chloramphenicol Dextrose Agar. Double Wrapped. Irradiated EP/USP/ISO	20 plates
842	Sabouraud Chloramphenicol Dextrose Agar. Triple Wrapped. Irradiated. EP/USP/ISO	20 plates
838	Sabouraud TLHTh Agar. EP/USP Double Wrapp. Irradiated	20 plates
907	Dextrose Sabouraud Agar EP/USP	20 plates
841	Sabouraud Dextrose Agar. Double Wrapped. Irradiated EP/USP/ISO	20 plates
840	Tryptone Soya Agar (TSA) with Neutralizings. Double Wrapped. Irradiated	20 plates
904	Trypticasein Soy Agar (TSA) EP/USP/ISO	20 plates
836	Trypticasein Soy Agar (TSA) EP/USP/ISO. Doble wrapped. Irradiated	20 plates
839	Trypticasein Soy Agar (TSA) EP/USP/ISO. Triple Wrapped. Irradiated	20 plates
837	TSA TLHTh. (Trypticasein Soy Agar) EP/USP Triple Wrapped Irradiated	20 plates

Rodac contact plates

Simple and convenient handling to streamline *on-site* surface monitoring and the validation of cleaning processes.

CAT	PRODUCT	FORMAT
4530	Baird-Parker Agar ISO	30 plates
4532	Violet Red Bile Lactose Agar (VRBL) ISO	30 plates
4524	Violet Red Bile Agar With Glucose (VRBG) EP/USP/ISO	30 plates
4527	Cetrimide Agar	30 plates
4528	Sabouraud Dextrose Agar with Chloramphenicol	30 plates
4544	Sabouraud Dextrose Agar with Chloramphenicol EP/USP/ISO. Trple Wrapped. Irradiated ISO	24 plates
4545	Sabouraud Dextrose Agar with Neutralizings. Double Wrapped. Irradiated.	30 plates
4546	Dextrose Sabouraud Agar with Neutralings. Triple Wrapped. Irradiated	24 plates
4522	Sabouraud Dextrose Agar EP/USP/ISO	30 plates
4542	Sabouraud Dextrose Agar. Triple Wrapped. Irradiated EP/USP/ISO	24 plates
4523	MacConkey Agar EP/USP/ISO	30 plates
4521	Standard Methods Agar (PCA)	30 plates
4529	Rose Bengal Agar with Chloramphenicol	30 plates
4526	Mannitol Salt Agar (MSA) (Chapman Medium) EP/USP/ISO	30 plates
4520	Trypticasein Soy Agar (TSA) EP/USP/ISO	30 plates
4534	Trypticasein Soy Agar (TSA) with Neutralizings. Triple Wrapped. Irradiated	24 plates
4533	Trypticasein Soy Agar (TSA) EP/USP/ISO. Triple Wrapped. Irradiated	30 plates
4538	Trypticasein Soy Agar (TSA) with Neutralizings. Double Wrapped. Irradiated	30 plates
4525	TSA Lethen Agar (Irradiated)	30 plates
4561	TSA with Penase with Lecithin with Polisorbate	30 plates

Sterile products and media fill test

For final bioprocess products that require sterility assurance, the Ph.Eur. recommends the Media Fill Test (MFT) or Aseptic Process Simulation (APS) as the reference method. This test evaluates aseptic filling systems, validating that the procedures implemented are effective in preventing the contamination of sterile products.

Culture media

CAT	PRODUCT	FORMAT
1380	Vegetable Peptone Broth (TSB Vegetable)	500 g and 5 kg
1224	Trypticasein Soy Broth (TSB) EP/USP/ISO	500 g and 5 kg
1508	Thioglycollate Fluid Medium EP/USP	500 g and 5 kg



The implemented procedures must be effective in preventing the contamination of sterile products.



SPECIFICATION %		AMINO ACIDS %																												
CAT	DESCRIPTION	Amino Nitro- gens [AN]	Total nitrogen [TN]	AN/TN ratio	Loss on drying	Ash	pH (2% solution)	Calcium	Magnesium	Potassium	Sodium	Alanine	Arginine	Aspartic acid	Cysteine	Glutamic acid	Glycine	Histidine	Isoleucine	Leucine	Lysine	Methionine	Phenylalanine	Proline	Serine	Threonine	Tryptophan	Tyrosine	Valine	
1710	Bacteriological Ox Bile				<6%		7.2-9.5									15.86	2.29	2.08	3.91	6.5	5.98	1.63	3.58	6.91	4.37	3.56	0.97	1.68	4.85	
1700	Meat Extract	>4.5%	>10%		<6%	<15%	6.5-7.5	1.6	0.019	2.6	3.28	3.22	6.6																	
1702	Yeast extract	>5%	>10%		<6%	<16%	6.8-7.2																							
1721	Biochemical Grade Yeast Extract				<6%	<15%	6.8-7.2																							
1708	Malt Extract				<6%	-	4.5-5.5	0.4	0.5	0.9	0.4	0.5	0.9	0	0	0.16	0.4	0.6	0.5	0.6	0.6	0.2	0.7	0.6	0.4	0.4	0	0.3	0.6	
1704	Bacteriological Gelatin				<6%	<1%																								
1626	Lactalbumin Hydrolysate	>4.8%	>10%		<6%	<15%	6.8	0.078	0.027	0.83	2.1	3.2	7.59	0.76	0.76	17.12	1.83	2.02	4.3	6.52	6.08	1.6	3.08	7.37	4.72	4.58	1.17	0.97	5.07	
1712	Porcine Brain Heart Infusion	>10%	>10%	42.7	<6%	<15%	7.25	0.02	0.012	2.11	4.09	3.47	8.78	0.5	0.5	15.04	3.45	1.72	3.35	5.8	5.4	1.65	3.15	6.25	3.8	6.27	0.87	1.49	4.21	
	Bovine Heart Infusion	>10%	>10%		<6%	<15%	7	0.009	0.02	1.4	3.6	3.2	6.05	0.31	0.31	15.97	2.5	2.13	3.91	6.68	6.01	1.75	3.66	7.04	4.54	3.12	0.87	1.31	4.73	
1716	Porcine Heart Infusion	>10%	>10%		<6%	<15%	7.1	0.018	0.012	2.36	3.96	3.32	8.77	0.54	0.54	14.77	2.55	0.05	3.39	5.83	5.43	1.65	3.15	5.84	3.81	3.33	0.91	0	4.24	
1628	Peptonized Milk	>1.9%	>6%		<6%	<15%	6.7	1.56	1.71	3.86	0.28	10.01	10.01	0.28	0.28	10.01	1.07	1.29	2.43	4.25	3.35	1.02	2.18	4.81	2.73	2.18	0.52	1.2	2.98	
1616	Bacteriological Peptone	>2.7%	>10%		<6%	<15%	6.9	0.018	0.01	1.1	0.97	7.89	7.16	0.13	0.13	9.58	20.6	0.89	2.63	2.84	3.61	0.85	1.88	11.46	3.45	1.87	0.06	0.71	2.31	
1600	Meat Peptone	>3.4%	>10%		<6%	<15%	6.9	0.072	0.029	2.7	2.5	5.62	4.08	0.37	0.37	11.62	8.37	1.31	2.63	4.6	4.3	0.85	2.61	6.29	2.95	2.46	0.59	1.11	3.5	
1624	Pork Peptone	>3.4%	>10%		<6%	<15%	7.25	0.02	0.012	2.11	4.09	3.47	3.31	8.78	0.5	0.5	15.04	3.45	1.72	3.35	5.8	5.4	1.65	3.15	6.25	3.8	6.27	0.87	1.49	4.21
1602	Casein Peptone	>3.9%	>10%		<6%	<15%	6.8	0.019	0.0079	1.3	2.1	2.91	3.3	6.99	0.44	0.44	18.74	1.86	2.38	4.45	7.62	6.6	2.32	4.11	8.65	5.08	3.91	0.95	1.86	5.51
1604	Acid Casein Peptone	>4%	>7.5%		<6%	<45%	7																							
1603	CC Casein Peptone	>3.9%	>10%		<6%	<15%	6.8	0.02	0.0069	1.8	2.2	2.94	3.36	6.28	0.41	0.41	17.9	1.88	2.39	4.44	7.6	6.63	2.31	4.13	8.62	5.02	3.96	0.92	1.85	5.5
1606	Gelatin Peptone	>2.7%	>10%		<6%	<15%	6	0.018	0.01	0.97	1.1	7.89	7.16	6.34	0.13	0.13	9.58	20.6	0.89	2.63	2.84	3.61	0.85	1.88	11.46	3.41	1.87	0.06	0.71	2.31
1703	Liver Peptone	4-6%	10-12%		<6%		5.5-6.5	4.6	1.3	6.6	0	9	5.3	5.7	4.8	1.7	3.8	3.4	3.5	5.7	4.8	1.7	3.8	3.4	3	3.3	0	1.1	5.6	
1615	GMO-free and animal-free soy peptone	2-3%	9-11%		<5%	≤ 15%	6.5-7.5	2.66	4.08	6.96																				
1610	Polypeptone	>3.7%	>10%		<6%	<15%	6.8	0.03	0.014	1.6	2.12	4.05	3.76	8.83	0.43	0.43	15.9	5.7	1.81	3.44	5.99	5.5	1.31	3.34	8.21	4.33	3.31	0.8	1.42	4.31
1609	Proteose Peptone	>3.4%	>10%		<6%	<10%	6.7	0.024	0.023	1.4	2.7	3.49	3.54	6.5	0.38	0.38	15.51	3.41	1.98	3.66	6.68	5.81	1.61	3.53	7.11	3.53	3.46	0.8	1.59	4.82
1607	Proteose Peptone N°3	>3.4%	>10%		<6%	<10%	6.7	3.48	3.29	6.69	0.47	16.14	2.9	1.99	3.83	6.5	5.95	1.77	3.56	6.95	4.3	3.57	0.95	3.57	4.3	3.57	0.95	1.58	4.89	
1706	Bile Salts No. 3				<5%		5.5-6.5	4.6	1.3	6.6	0	9	5.3	5.7	4.8	1.7	3.8	3.4	3.5	5.7	4.8	1.7	3.8	3.4	3	3.3	0	1.1	5.6	
1612	Tryptone	>3.9%	>10%		<6%	<15%	6.8	0.019	0.0065	0.95	2.1	2.87	3.31	6.52	0.4	0.4	18.7	1.79	2.29	4.48	7.63	6.51	2.35	4.09	8.65	5.08	3.91	1.05	1.86	5.51
1614	Tryptose	>2.9%	>10%		<6%	<15%	7.4	0.001	0.022	0.679	3.41	4.45	6.34	0.44	0.44	13.92	2.84	0.01	0.34	3.67	4.64	1.92	7.52	6.33	4.09	3.55	0.62	2.21	1.93	
1637	CondalLow Meat Peptone	≥3.4%	≥10%		<6%	≤ 15%	6.9	0.072	0.029	2.7	2.5	5.62	4.08	5.61	0.37	0.37	11.62	8.37	1.31	2.63	4.5	4.3	0.85	2.61	6.29	2.95	2.46	0.59	1.11	3.5
1636	CondalLow Casein Peptone	≥3.9%	≥10%		<6%	≤ 15%	6.8	0.019	0.0079	1.3	2.1	2.91	3.3	6.99	0.44	0.44	18.74	1.86	2.38	4.45	7.62	6.6	2.32	4.11	8.65	5.08	3.91	0.95	1.86	5.51
1618	CondalLow Soy Peptone	≥2.2%	≥7%		<6%	≤ 15%	7.3	0.039	0.099	4.5	3.16	3.18	3.05	9	0.79	11.83	2.47	1.23	2.55	3.9	3.85	0.86	2.4	2.54	2.69	2.61	0.68	1.38	2.94	
1626	Lactalbumin Hydrolysate	>4.8%	>10%		<6%	<15%	6.8	0.078	0.027	0.83	2.1	3.2	7.59	0.76	0.76	17.12	1.83	2.02	4.3	6.52	6.68	1.6	3.08	7.37	4.72	4.58	1.17	0.97	5.07	

The amino acid values refer to typical values and are not specific to each batch. However, these typical data are the result of frequent reviews.

DISCOVER
OUR PRODUCTS

+

Conda^{low}[®]

Starter Packs

Ingredients for fermentations



Condalab

Inspired by knowledge

comercial@condalab.com | www.condalab.com

CODE SVMP62729041