

# RESPIRATORY INFECTIOUS DISEASE TEST

Serve the Society and Create a Healthy World

**HMPV Antigen  
Rapid Test**

**MP  
Mycoplasma  
pneumoniae**

**SARS-CoV-2  
covid virus**

**RSV  
Syncytial  
Virus**

**Influenza A  
Flu virus**

**Parainfluenza  
Virus**

**Adeno  
Adenoviruses**

**Influenza B  
Flu virus**



# Multiple Respiratory Antigen Combo Test



**Fast Result Within 15 mins**  
(customized combine in one panel at once)



**SARS-CoV-2 covid virus**

**MP Mycoplasma pneumoniae**

**Parainfluenza Virus**

**HMPV Antigen Rapid Test**

**Adeno Adenoviruses**

**RSV Syncytial Virus**

**Influenza A/B Flu virus**



- 3 in 1 — FLU A/B+COVID-19 Antigen Combo Test Cassette**
- 3 in 1 — FLU A/B+RSV Antigen Combo Test Cassette**
- 4 in 1 — FLU A/B+COVID-19+RSV Antigen Combo Test Cassette**
- 5 in 1 — FLU A/B + COVID-19 +RSV + Adenoviruses**
- 6 in 1 — FLU A/B+COVID-19+RSV+Adeno+MP**



The kit is only used for the intro qualitative detection of Multiple Respiratory Multipathogen Antigen SARS-CoV-2/Respiratory Syncytial Virus/Influenza A Virus/Influenza B Virus/Adenoviruses/Mycoplasma pneumoniae from Human Nasal swabs specimens , any customized combined panel.

# OUR PRODUCTS CAN BE SEEN EVERYWHERE IN THAILAND



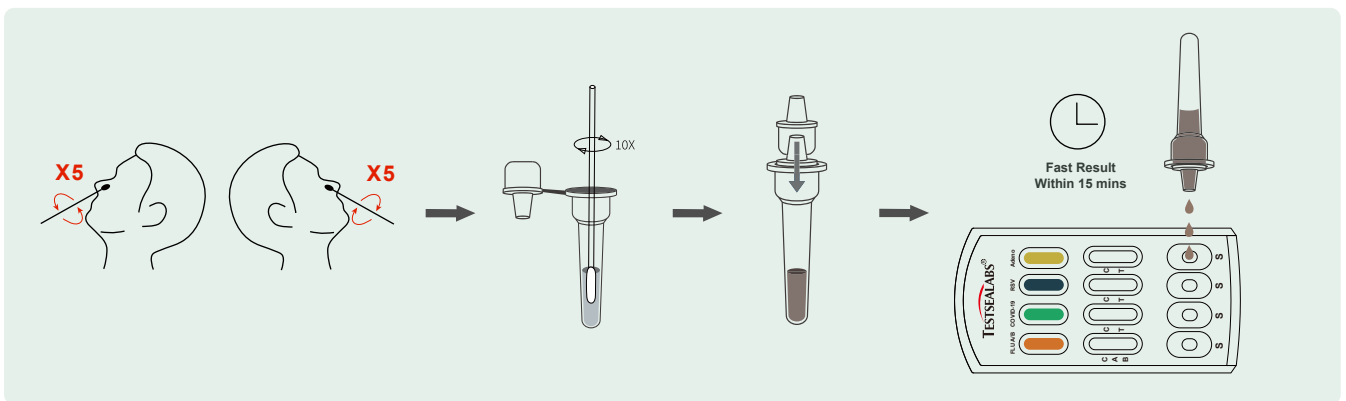
## HOSPITAL



## SUPERMARKET

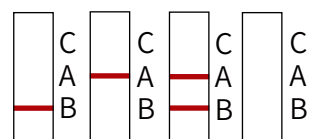
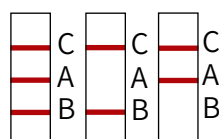
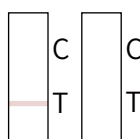
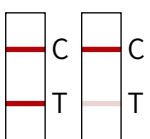
## GOVERNMENT

# OPERATION STEPS AND RESULT INTERPRETATION



## COVID-19/RSV/Adeno/MP

## FLUA-B



Positive

Negative

Invalid

Positive

Negative

Invalid

# COVID-19 Antigen Test Cassette-self test

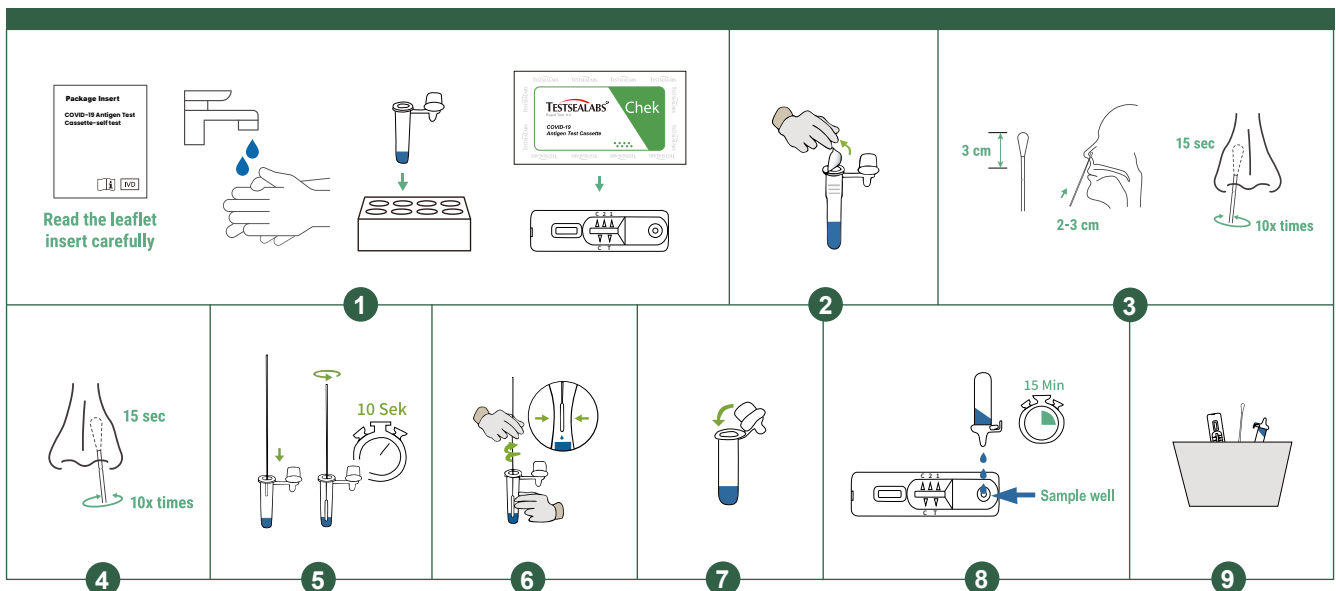
A Rapid test for the qualitative detection of SARS-CoV-2 nucleocapsid antigen in anterior nasal swabs. The test is designed for home test by lay users.



Sensitivity	Specificity
97.73%	98.14%

- Self-test for home use
- Instant Result in 15 minutes faster than PCR test
- No equipment required
- 6 languages instruction: English, French, Spanish, Dutch, German, Italian

## TEST PROCEDURE



# FLUA/B Antigen Test Cassette

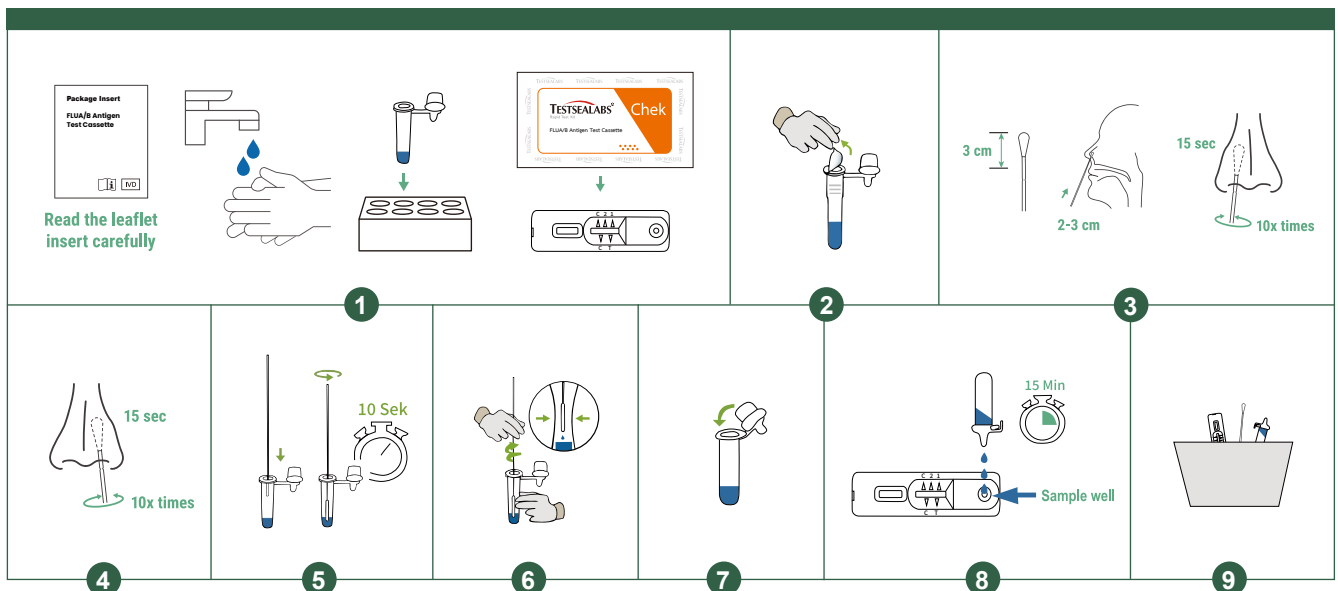
A rapid test for the qualitative detection of influenza A virus, influenza B virus nucleocapsid protein antigen in nasopharyngeal swab specimens.



- Easy operation
- Results in 15 minutes
- High sensitivity and accuracy
- Don't need the machine

	Sensitivity	Specificity
Flu A	96.67%	100.00%
Flu B	95.92%	100.00%

## TEST PROCEDURE



# FLU A/B+COVID-19/MP+RSV/Adeno+HMPV Antigen Combo Test Cassette

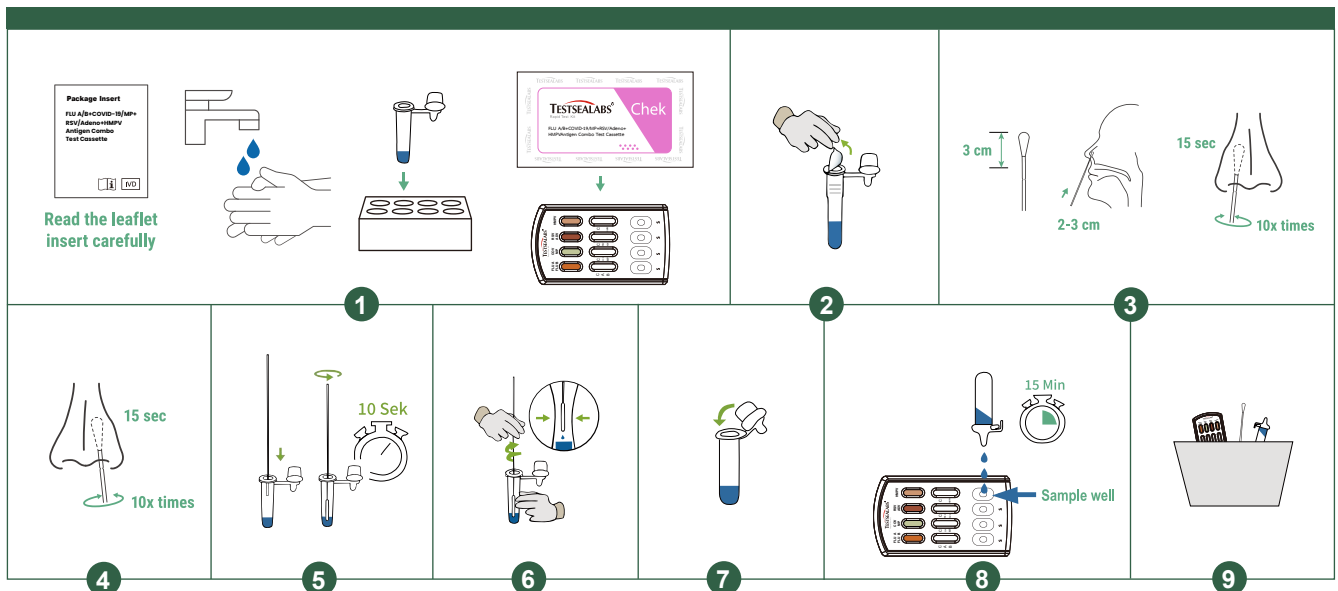
A rapid chromatographic immunoassay for the qualitative detection of influenza A virus, influenza B virus, COVID-19, mycoplasma pneumoniae, respiratory syncytial virus, adenovirus and human metapneumovirus antigen in nasal swab specimens.



- Easy operation
- Results in 15 minutes
- High sensitivity and accuracy
- Don't need the machine

	Sensitivity	Specificity
<b>COVID-19</b>	<b>97.73%</b>	<b>98.14%</b>
<b>Flu A</b>	<b>96.67%</b>	<b>100.00%</b>
<b>Flu B</b>	<b>95.92%</b>	<b>100.00%</b>
<b>MP</b>	<b>99.50%</b>	<b>99.00%</b>
<b>RSV</b>	<b>97.50%</b>	<b>98.00%</b>
<b>Adeno</b>	<b>99.00%</b>	<b>99.33%</b>
<b>HMPV</b>	<b>100.00%</b>	<b>93.33%</b>

## TEST PROCEDURE



# FLUA/B+COVID-19 Antigen Combo Test Cassette

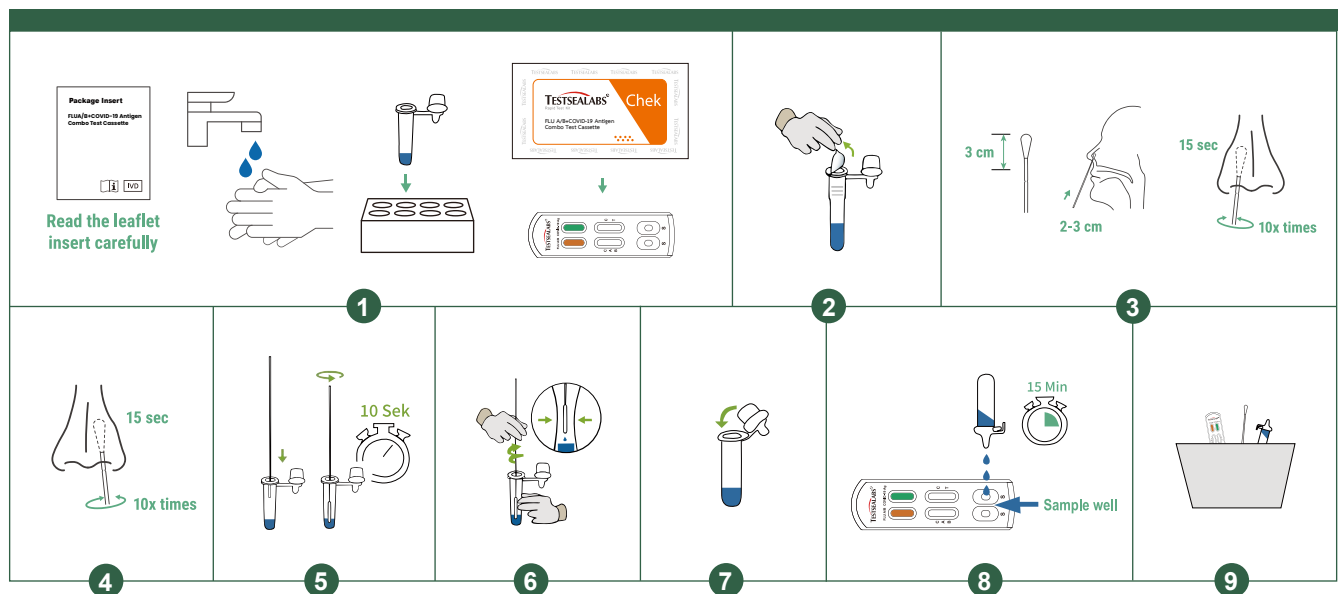
A rapid test for the qualitative detection of influenza A virus, influenza B virus and COVID-19 nucleocapsid protein antigen in nasopharyngeal swab specimens.



- Easy operation
- Results in 15 minutes
- High sensitivity and accuracy
- Don't need the machine

	Sensitivity	Specificity
<b>COVID-19</b>	<b>97.73%</b>	<b>98.14%</b>
<b>Flu A</b>	<b>96.67%</b>	<b>100.00%</b>
<b>Flu B</b>	<b>95.92%</b>	<b>100.00%</b>

## TEST PROCEDURE



# FLUA/B+RSV Antigen Combo Test Cassette

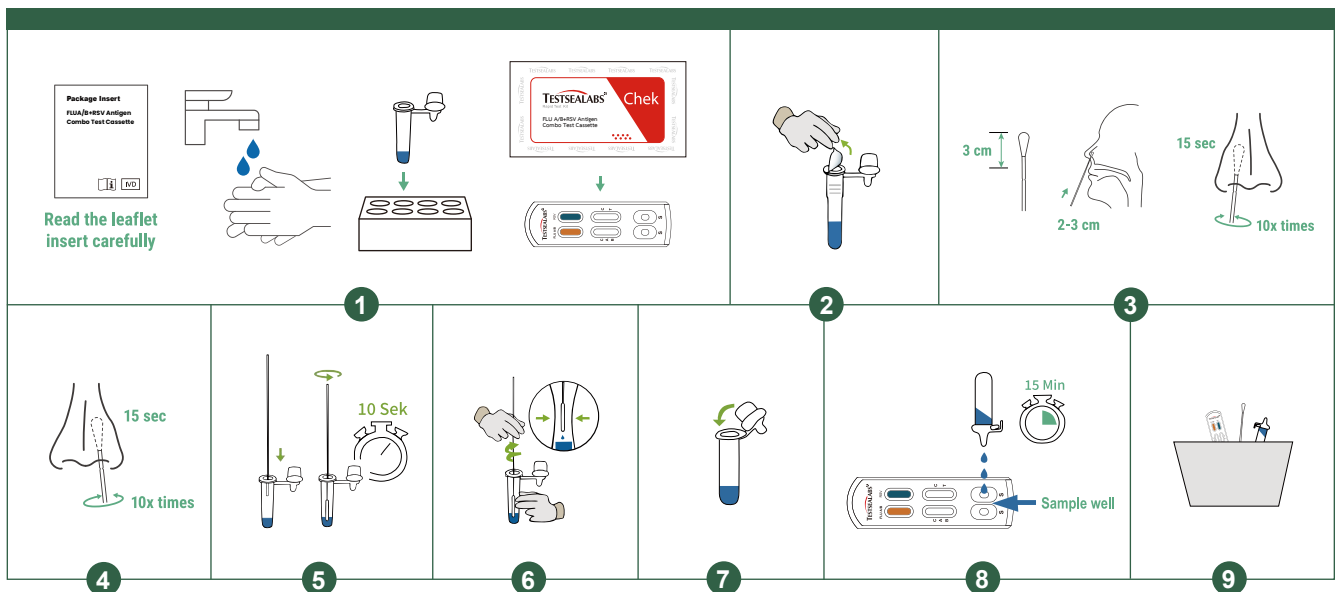
A rapid test for the qualitative detection of influenza A virus, influenza B virus and RSV antigen in nasal swab specimens.



- Easy operation
- Results in 15 minutes
- High sensitivity and accuracy
- Don't need the machine

	Sensitivity	Specificity
<b>RSV</b>	<b>97.50%</b>	<b>98.00%</b>
<b>Flu A</b>	<b>96.67%</b>	<b>100.00%</b>
<b>Flu B</b>	<b>95.92%</b>	<b>100.00%</b>

## TEST PROCEDURE



# FLUA/B+COVID-19+RSV Antigen Combo Test Cassette

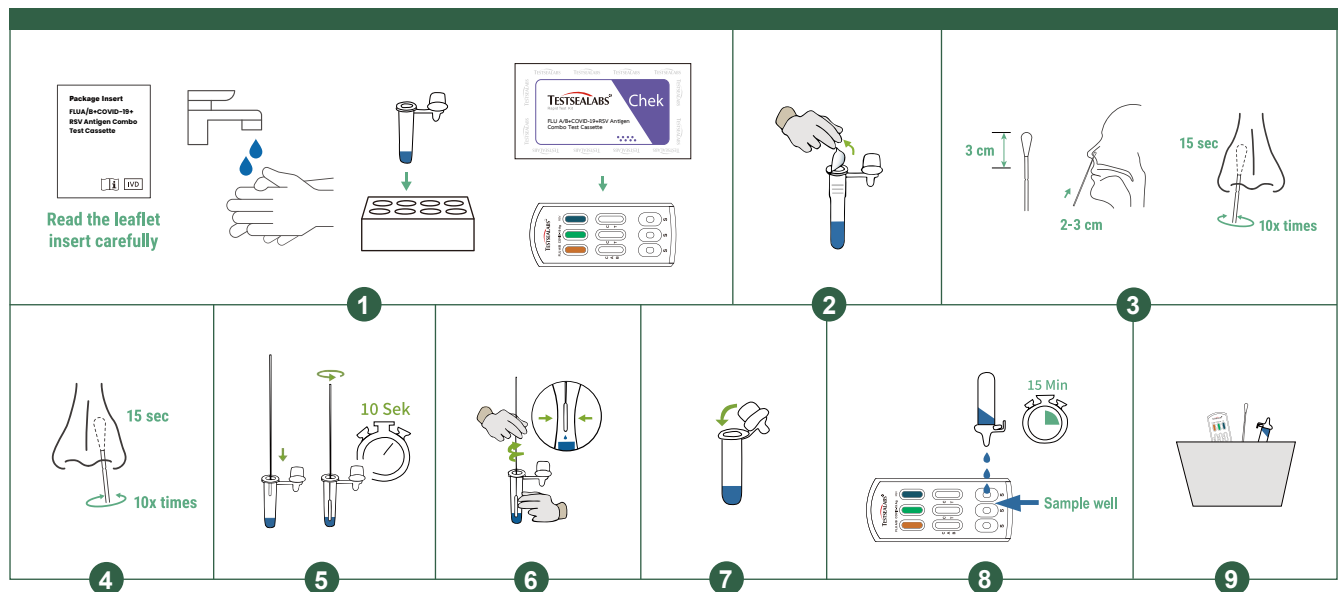
FLU A/B+COVID-19+RSV Antigen Combo Test is a rapid chromatographic immunoassay for the qualitative detection of influenza A, influenza B, COVID-19 and respiratory syncytial virus antigen in nasopharyngeal swab specimens.



- Easy operation
- **Results in 15 minutes**
- High sensitivity and accuracy
- Don't need the machine

	Sensitivity	Specificity
<b>COVID-19</b>	<b>97.73%</b>	<b>98.14%</b>
<b>RSV</b>	<b>97.50%</b>	<b>98.00%</b>
<b>Flu A</b>	<b>96.67%</b>	<b>100.00%</b>
<b>Flu B</b>	<b>95.92%</b>	<b>100.00%</b>

## TEST PROCEDURE



# FLU A/B+COVID-19+RSV+Adeno+MP Antigen Combo Test Cassette

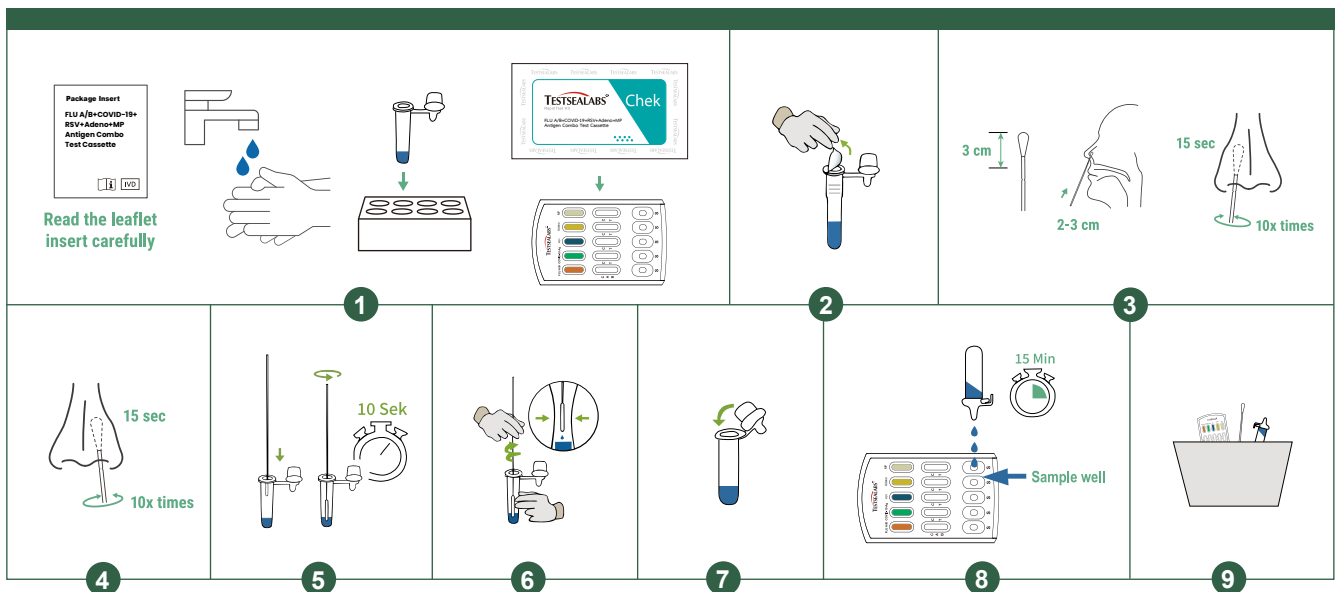
COVID-19/MP+RSV/Adeno+FLU A/B Antigen Combo Test Cassette is a rapid chromatographic immunoassay for the qualitative detection of COVID-19, mycoplasma pneumoniae, respiratory syncytial virus, adenovirus, influenza A virus and influenza B virus antigen in nasopharyngeal swab specimens.



- Easy operation
- Results in 15 minutes
- High sensitivity and accuracy
- Don't need the machine

	Sensitivity	Specificity
COVID-19	97.73%	98.14%
RSV	97.50%	98.00%
Adeno	99.00%	99.33%
MP	99.50%	99.00%
Flu A	96.67%	100.00%
Flu B	95.92%	100.00%

## TEST PROCEDURE



# Product List

Product name	Catalog No.	Specimen	Format	Specification	Certificate
SARS-CoV-2 IgG/IgM Test Cassette (Colloidal gold)	101001	WB/S/P	Cassette	20T 1T	CE ISO
COVID-19 Antigen Test Cassette	201002	Nasopharyngeal swab	Cassette	25T 5T 1T	CE ISO TGA BfArM and PEI List
COVID-19 Antigen Test Cassette	201002	Nasal swab	Cassette	20T 5T 1T	CE ISO TGA BfArM and PEI List
COVID-19 Antigen Test Cassette(Saliva)	201002	Saliva	Cassette	20T 1T	CE ISO
COVID-19 Antigen Test Cassette(Saliva)——Lollipop Style	201002	Saliva	Midstream	20T 1T	CE ISO
Influenza Ag A Test	201004	Nasopharyngeal Swab	Cassette	25T	CE ISO
Influenza Ag B Test	201005	Nasopharyngeal Swab	Cassette	25T	CE ISO
Influenza Ag A+B Test Cassette	201050	Nasopharyngeal Swab	Cassette	25T	CE ISO
Influenza Ag A/B Test	201058	Nasopharyngeal Swab	Cassette	25T	CE ISO
Strep A Antigen Test	101069	Throat Swab	Cassette	25T	CE ISO
RSV Respiratory Syncytial Virus Ag Test	201066	Nasopharyngeal Swab	Cassette	25T	CE ISO
Human Metapneumovirus Antigen Test Cassette	201096	Nasopharyngeal Swab	Cassette	25T	CE ISO
Mycoplasma Pneumoniae Ab IgG/IgM Test	101042	WB/S/P	Cassette	25T/40T	CE ISO
Mycoplasma Pneumoniae Ab IgM Test	101043	WB/S/P	Cassette	25T/40T	CE ISO
Mycoplasma Pneumoniae Antigen Test	201072	Nasopharyngeal Swab	Cassette	25T	CE ISO
Chlamydia Pneumoniae Ab IgG/IgM Test	101040	WB/S/P	Cassette	25T/40T	ISO
Chlamydia Pneumoniae Ab IgM Test	101041	WB/S/P	Cassette	25T/40T	ISO
TB Tuberculosis Antibody Test	101018	WB/S/P	Cassette	25T/40T	CE ISO
TB Tuberculosis Antigen Test Cassette	201062	Sputum	Cassette	20T	CE ISO
Legionella Pneumophila Antigen Test	201081	Urine	Cassette	25T/40T	CE ISO
FLU A/B + COVID-19 Antigen Combo Test Cassette	201056	Nasopharyngeal Swab	Cassette	25T 1T	CE ISO
FLU A/B+RSV Antigen Combo Test Cassette	201092	Nasopharyngeal Swab	Cassette	25T	CE ISO
FLU A/B+RSV+MP Antigen Combo Test Cassette	201095	Nasopharyngeal Swab	Cassette	25T	CE ISO
FLU A/B+COVID-19+RSV Antigen Combo Test Cassette	201070	Nasopharyngeal Swab	Cassette	25T	CE ISO
FLU A/B+COVID-19+RSV+Adeno Antigen Combo Test Cassette	201067	Nasopharyngeal Swab	Cassette	25T	CE ISO
FLU A/B+COVID-19+RSV+Adeno+MP Antigen Combo Test Cassette	201071	Nasopharyngeal Swab	Cassette	20T	CE ISO



**Hangzhou Testsea Biotechnology Co., Ltd.**

**Add: No. 13-2 Guanshan Road, Yuhang District, 311115 Hangzhou, Zhejiang, China**

**Web: [www.testsealabs.com](http://www.testsealabs.com)**

**Email: [sales@testsealabs.com](mailto:sales@testsealabs.com)**

**Tel: 0571-88600160**