

Recombinant *Bacillus thuringiensis* Cry1F Protein



Cat. No. *cry1F-04B*

Lot. No. (See product label)

Product Name

Recombinant *Bacillus thuringiensis* Cry1F Protein

Product Overview

Promotes colloidosmotic lysis by binding to the midgut epithelial cells of lepidopteran (*Manduca sexta*) larvae.

Form

Liquid

Molecular Mass

68 kDa

Purity

≥85.0%

Synonyms

cry1F

Source

Escherichia coli

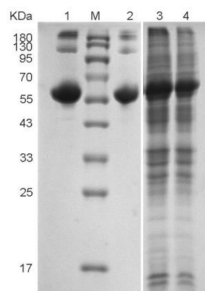
Official Symbol

Cry1F

Species

Bacillus thuringiensis

Figure



Protein length

605 aa

FOR RESEARCH OR FURTHER MANUFACTURING USE ONLY