



ITIH3 (Cleaved-Asp651) rabbit pAb

Cat No.:ES20014

For research use only

Overview

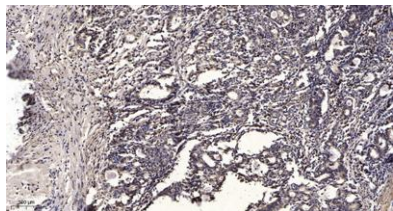
Product Name	ITIH3 (Cleaved-Asp651) rabbit pAb
Host species	Rabbit
Applications	WB;ELISA;IHC
Species Cross-Reactivity	Human;Mouse;Rat
Recommended dilutions	WB 1:500-2000;IHC-p 1:50-300; ELISA 2000-20000
Immunogen	Synthesized peptide derived from human ITIH3 (Cleaved-Asp651)
Specificity	This antibody detects endogenous levels of Human,Mouse,Rat ITIH3 (Cleaved-Asp651, protein was cleaved amino acid sequence between 651-652)
Formulation	Liquid in PBS containing 50% glycerol, 0.5% BSA and 0.02% sodium azide.
Storage	Store at -20°C. Avoid repeated freeze-thaw cycles.
Protein Name	ITIH3 (Cleaved-Asp651)
Gene Name	ITIH3
Cellular localization	Secreted.
Purification	The antibody was affinity-purified from rabbit antiserum by affinity-chromatography using epitope-specific immunogen.
Clonality	Polyclonal
Concentration	1 mg/ml
Observed band	68 95kD
Human Gene ID	3699
Human Swiss-Prot Number	Q06033
Alternative Names	Inter-alpha-trypsin inhibitor heavy chain H3 (ITI heavy chain H3;ITI-HC3;Inter-alpha-inhibitor heavy chain 3;Serum-derived hyaluronan-associated protein;SHAP)

Background





ELK Biotechnology



Immunohistochemical analysis of paraffin-embedded human Gastric adenocarcinoma. 1, Antibody was diluted at 1:200(4° overnight). 2, Tris-EDTA,pH9.0 was used for antigen retrieval. 3,Secondary antibody was diluted at 1:200(room temperature, 45min).



+86-27-59760950

ELKbio@ELKbiotech.com

www.elkbiotech.com

23-2, No.388 Gaoxin 2nd Road,Wuhan East Lake Hi-tech Development Zone, Hubei , P.R.C