

MBNL3 rabbit pAb

Cat No.:ES15020

For research use only

Overview

Product Name	MBNL3 rabbit pAb
Host species	Rabbit
Applications	WB
Species Cross-Reactivity	Human; Mouse
Recommended dilutions	WB 1:500-2000
Immunogen	Synthesized peptide derived from human MBNL3 AA range: 184-234
Specificity	This antibody detects endogenous levels of MBNL3 at Human/Mouse
Formulation	Liquid in PBS containing 50% glycerol, 0.5% BSA and 0.02% sodium azide.
Storage	Store at -20°C. Avoid repeated freeze-thaw cycles.
Protein Name	MBNL3
Gene Name	MBNL3 CHCR MBLX39 MBXL
Cellular localization	Nucleus . Cytoplasm . Greater concentration in the nucleus. In both DM1 and DM2 patients, colocalizes with nuclear foci of retained expanded-repeat transcripts.
Purification	The antibody was affinity-purified from rabbit antiserum by affinity-chromatography using epitope-specific immunogen.
Clonality	Polyclonal
Concentration	1 mg/ml
Observed band	38kD
Human Gene ID	55796
Human Swiss-Prot Number	Q9NUK0
Alternative Names	Muscleblind-like protein 3 (Cys3His CCG1-required protein) (Muscleblind-like X-linked protein) (Protein HCHCR)
Background	This gene encodes a member of the muscleblind-like family of proteins. The encoded protein may function in regulation of alternative splicing and may play a role in the pathophysiology of myotonic

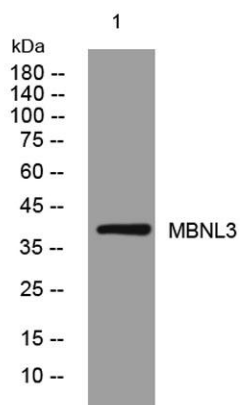




ELK Biotechnology

dystrophy. Alternatively spliced transcript variants have been described. [provided by RefSeq, Dec 2009],

Western blot analysis of lysates from KB cells, primary antibody was diluted at 1:1000, 4° over night



+86-27-59760950

ELKbio@ELKbiotech.com

www.elkbiotech.com

23-2, No.388 Gaoxin 2nd Road, Wuhan East Lake Hi-tech Development Zone, Hubei, P.R.C.