

SH3BGRL3 Polyclona Antibody

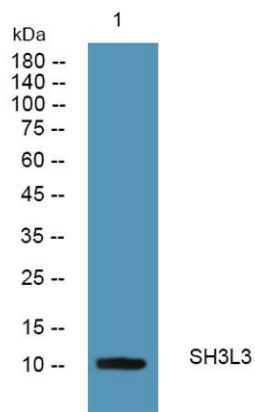
Cat No.:ES13129

For research use only

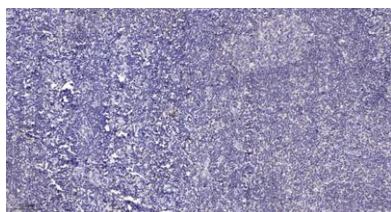
Overview

Product Name	SH3BGRL3 Polyclona Antibody
Host species	Rabbit
Applications	WB;IHC;IF;ELISA
Species Cross-Reactivity	Human; Mouse; Rat
Recommended dilutions	Western Blot: 1/500 - 1/2000. Immunohistochemistry: 1/100 - 1/300. Immunofluorescence: 1/200 - 1/1000. ELISA: 1/5000. Not yet tested in other applications.
Immunogen	Synthesized peptide derived from human SH3BGRL3 AA range: 34-84
Specificity	This antibody detects endogenous levels of human SH3BGRL3
Formulation	Liquid in PBS containing 50% glycerol, 0.5% BSA and 0.02% sodium azide.
Storage	Store at -20°C. Avoid repeated freeze-thaw cycles.
Protein Name	SH3BGRL3
Gene Name	SH3BGRL3 P1725
Cellular localization	Cytoplasm. Nucleus.
Purification	The antibody was affinity-purified from rabbit antiserum by affinity-chromatography using epitope-specific immunogen.
Clonality	Polyclonal
Concentration	1 mg/ml
Observed band	
Human Gene ID	83442
Human Swiss-Prot Number	Q9H299
Alternative Names	SH3 domain-binding glutamic acid-rich-like protein 3 (SH3 domain-binding protein 1;SH3BP-1)
Background	function:Could act as a modulator of glutaredoxin biological activity.,similarity:Belongs to the SH3BGR family.,similarity:Contains 1 glutaredoxin domain.,tissue specificity:Ubiquitous.,





Western blot analysis of lysates from HCT116 cells, primary antibody was diluted at 1:1000, 4° over night



Immunohistochemical analysis of paraffin-embedded human tonsil. 1, Antibody was diluted at 1:200(4° overnight). 2, Tris-EDTA, pH9.0 was used for antigen retrieval. 3, Secondary antibody was diluted at 1:200(room temperature, 30min).

