

IFI30 rabbit pAb

Cat No.:ES15529

For research use only

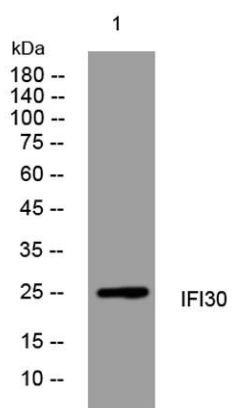
Overview

Product Name	IFI30 rabbit pAb
Host species	Rabbit
Applications	WB
Species Cross-Reactivity	Human; Mouse;Rat
Recommended dilutions	WB 1:500-2000
Immunogen	Synthesized peptide derived from human IFI30 AA range: 3-53
Specificity	This antibody detects endogenous levels of IFI30 at Human/Mouse/Rat
Formulation	Liquid in PBS containing 50% glycerol, 0.5% BSA and 0.02% sodium azide.
Storage	Store at -20°C. Avoid repeated freeze-thaw cycles.
Protein Name	IFI30
Gene Name	IFI30 GILT IP30
Cellular localization	Secreted . Lysosome .
Purification	The antibody was affinity-purified from rabbit antiserum by affinity-chromatography using epitope-specific immunogen.
Clonality	Polyclonal
Concentration	1 mg/ml
Observed band	25kD
Human Gene ID	10437
Human Swiss-Prot Number	P13284
Alternative Names	Gamma-interferon-inducible lysosomal thiol reductase (EC 1.8.-.-) (Gamma-interferon-inducible protein IP-30) (Legumaturain)
Background	The protein encoded by this gene is a lysosomal thiol reductase that at low pH can reduce protein disulfide bonds. The enzyme is expressed constitutively in antigen-presenting cells and induced by gamma-interferon in other cell types. This enzyme has an important role in MHC class II-restricted antigen processing. [provided by



ELK Biotechnology

RefSeq, Jul 2008],



Western blot analysis of lysates from HeLa cells, primary antibody was diluted at 1:1000, 4° over night