

# PWP2A rabbit pAb

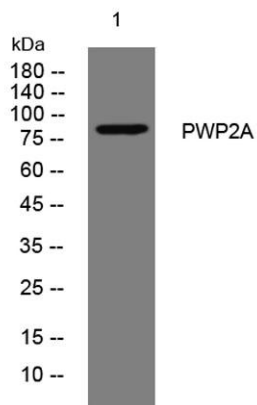
Cat No.:ES13849

For research use only

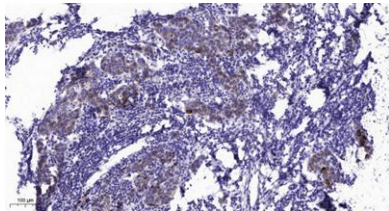
## Overview

Product Name	PWP2A rabbit pAb
Host species	Rabbit
Applications	WB;ELISA;IHC
Species Cross-Reactivity	Human; Mouse
Recommended dilutions	WB 1:500-2000;IHC-p 1:50-300; ELISA 2000-20000
Immunogen	Synthesized peptide derived from human PWP2A AA range: 237-287
Specificity	This antibody detects endogenous levels of PWP2A at Human/Mouse
Formulation	Liquid in PBS containing 50% glycerol, 0.5% BSA and 0.02% sodium azide.
Storage	Store at -20°C. Avoid repeated freeze-thaw cycles.
Protein Name	PWP2A
Gene Name	PWWP2A KIAA1935 MST101
Cellular localization	Nucleus .
Purification	The antibody was affinity-purified from rabbit antiserum by affinity-chromatography using epitope-specific immunogen.
Clonality	Polyclonal
Concentration	1 mg/ml
Observed band	
Human Gene ID	114825
Human Swiss-Prot Number	Q96N64
Alternative Names	
Background	





Western blot analysis of lysates from HEK293 cells,  
primary antibody was diluted at 1:1000, 4° over night



Immunohistochemical analysis of paraffin-embedded  
human Breast cancer. 1, Antibody was diluted at 1:200(4°  
overnight). 2, Tris-EDTA, pH9.0 was used for antigen  
retrieval. 3, Secondary antibody was diluted at 1:200(room  
temperature, 45min).

