

PDE4B rabbit pAb

Cat No.:ES14187

For research use only

Overview

Product Name	PDE4B rabbit pAb
Host species	Rabbit
Applications	WB
Species Cross-Reactivity	Human;Rat
Recommended dilutions	WB 1: 500-2000
Immunogen	Synthesized peptide derived from human PDE4B AA range: 103-153
Specificity	This antibody detects endogenous levels of PDE4B at Human/Rat
Formulation	Liquid in PBS containing 50% glycerol, 0.5% BSA and 0.02% sodium azide.
Storage	Store at -20°C. Avoid repeated freeze-thaw cycles.
Protein Name	PDE4B
Gene Name	PDE4B DPDE4
Cellular localization	[Isoform PDE4B5]: Cytoplasm . Cell membrane .
Purification	The antibody was affinity-purified from rabbit antiserum by affinity-chromatography using epitope-specific immunogen.
Clonality	Polyclonal
Concentration	1 mg/ml
Observed band	
Human Gene ID	5142
Human Swiss-Prot Number	Q07343
Alternative Names	
Background	This gene is a member of the type IV, cyclic AMP (cAMP)-specific, cyclic nucleotide phosphodiesterase (PDE) family. The encoded protein regulates the cellular concentrations of cyclic nucleotides and thereby play a role in signal transduction. Altered activity of this protein has been associated with schizophrenia and bipolar affective disorder. Alternative splicing and the use of alternative promoters results in multiple transcript

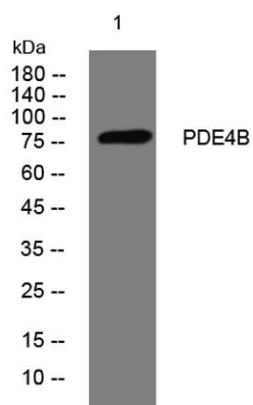




ELK Biotechnology

variants encoding different isoforms. [provided by RefSeq, Jul 2014],

Western blot analysis of lysates from PC-12 cells, primary antibody was diluted at 1:1000, 4° over night



+86-27-59760950

ELKbio@ELKbiotech.com

www.elkbiotech.com

23-2, No.388 Gaoxin 2nd Road, Wuhan East Lake Hi-tech Development Zone, Hubei, P.R.C.