

# TSG10 rabbit pAb

Cat No.:ES12537

For research use only

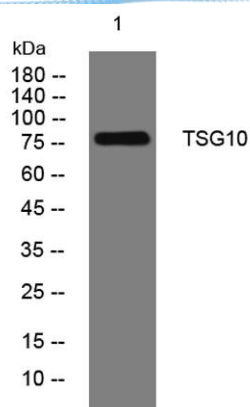
## Overview

Product Name	TSG10 rabbit pAb
Host species	Rabbit
Applications	WB
Species Cross-Reactivity	Human; Mouse;Rat
Recommended dilutions	WB 1: 500-2000
Immunogen	Synthesized peptide derived from human TSG10 AA range: 412-462
Specificity	This antibody detects endogenous levels of TSG10 at Human/Mouse/Rat
Formulation	Liquid in PBS containing 50% glycerol, 0.5% BSA and 0.02% sodium azide.
Storage	Store at -20°C. Avoid repeated freeze-thaw cycles.
Protein Name	TSG10
Gene Name	TSGA10 CEP4L
Cellular localization	Cytoplasm . Cytoplasm, cytoskeleton, microtubule organizing center, centrosome, centriole . In mature spermatozoa, localizes to the centriole and midpiece (PubMed:28905369). The 27-kDa peptide associates with the fibrous sheath in mature spermatozoa and I
Purification	The antibody was affinity-purified from rabbit antiserum by affinity-chromatography using epitope-specific immunogen.
Clonality	Polyclonal
Concentration	1 mg/ml
Observed band	
Human Gene ID	80705
Human Swiss-Prot Number	Q9BZW7
Alternative Names	
Background	





**ELK Biotechnology**



Western blot analysis of lysates from SW480 cells, primary antibody was diluted at 1:1000, 4° over night



+86-27-59760950

ELKbio@ELKbiotech.com

[www.elkbiotech.com](http://www.elkbiotech.com)

23-2, No.388 Gaoxin 2nd Road, Wuhan East Lake Hi-tech Development Zone, Hubei, P.R.C.