

IP3 Receptor (Phospho Tyr353) rabbit pAb

Cat No.:ES20180

For research use only

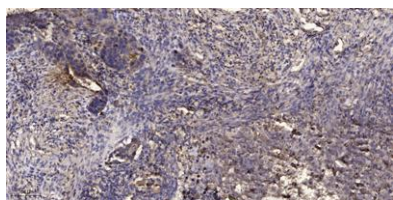
Overview

Product Name	IP3 Receptor (Phospho Tyr353) rabbit pAb
Host species	Rabbit
Applications	WB;IHC
Species Cross-Reactivity	Human;Mouse;Rat
Recommended dilutions	WB 1:500-2000;IHC-p 1:50-300
Immunogen	Synthesized peptide derived from human IP3 Receptor (Phospho Tyr353)
Specificity	This antibody detects endogenous levels of Human,Mouse,Rat IP3 Receptor (Phospho Tyr353)
Formulation	Liquid in PBS containing 50% glycerol, 0.5% BSA and 0.02% sodium azide.
Storage	Store at -20°C. Avoid repeated freeze-thaw cycles.
Protein Name	IP3 Receptor (Phospho Tyr353)
Gene Name	ITPR1 INSP3R1
Cellular localization	Endoplasmic reticulum membrane ; Multi-pass membrane protein . Cytoplasmic vesicle, secretory vesicle membrane ; Multi-pass membrane protein . Cytoplasm, perinuclear region . Endoplasmic reticulum and secretory granules (By similarity). .
Purification	The antibody was affinity-purified from rabbit antiserum by affinity-chromatography using epitope-specific immunogen.
Clonality	Polyclonal
Concentration	1 mg/ml
Observed band	320kD
Human Gene ID	3708
Human Swiss-Prot Number	Q14643
Alternative Names	Inositol 1,4,5-trisphosphate receptor type 1 (IP3 receptor isoform 1;IP3R 1;InsP3R1;Type 1 inositol 1,4,5-trisphosphate receptor;Type 1 InsP3 receptor)
Background	This gene encodes an intracellular receptor for inositol 1,4,5-trisphosphate. Upon stimulation by inositol 1,4,5-trisphosphate, this receptor mediates





calcium release from the endoplasmic reticulum. Mutations in this gene cause spinocerebellar ataxia type 15, a disease associated with an heterogeneous group of cerebellar disorders. Multiple transcript variants have been identified for this gene. [provided by RefSeq, Nov 2009],



Immunohistochemical analysis of paraffin-embedded human Squamous cell carcinoma of lung. 1, Antibody was diluted at 1:200(4° overnight). 2, Tris-EDTA,pH9.0 was used for antigen retrieval. 3,Secondary antibody was diluted at 1:200(room temperature, 45min).

