

# MMP7 (Cleaved-Tyr95) rabbit pAb

Cat No.:ES20029

For research use only

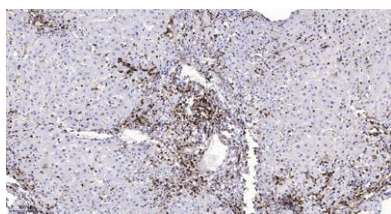
## Overview

Product Name	MMP7 (Cleaved-Tyr95) rabbit pAb
Host species	Rabbit
Applications	WB;ELISA;IHC
Species Cross-Reactivity	Human;Mouse;Rat
Recommended dilutions	WB 1:500-2000;IHC-p 1:50-300; ELISA 2000-20000
Immunogen	Synthesized peptide derived from human MMP7 (Cleaved-Tyr95)
Specificity	This antibody detects endogenous levels of Human,Mouse,Rat MMP7 (Cleaved-Tyr95, protein was cleaved amino acid sequence between 94-95 )
Formulation	Liquid in PBS containing 50% glycerol, 0.5% BSA and 0.02% sodium azide.
Storage	Store at -20°C. Avoid repeated freeze-thaw cycles.
Protein Name	MMP7 (Cleaved-Tyr95)
Gene Name	MMP7 MPSL1 PUMP1
Cellular localization	Secreted, extracellular space, extracellular matrix .
Purification	The antibody was affinity-purified from rabbit antiserum by affinity-chromatography using epitope-specific immunogen.
Clonality	Polyclonal
Concentration	1 mg/ml
Observed band	19 29kD
Human Gene ID	4316
Human Swiss-Prot Number	P09237
Alternative Names	Matrilysin (EC 3.4.24.23;Matrin;Matrix metalloproteinase-7;MMP-7;Pump-1 protease;Uterine metalloproteinase)
Background	catalytic activity:Cleavage of 14-Ala- -Leu-15 and 16-Tyr- -Leu-17 in B chain of insulin. No action on collagen types I, II, IV, V. Cleaves gelatin chain alpha-2(I) > alpha-1(I).,cofactor: Binds 2 calcium ions per subunit.,cofactor: Binds 2 zinc ions per subunit.,domain: The conserved cysteine present in





the cysteine-switch motif binds the catalytic zinc ion, thus inhibiting the enzyme. The dissociation of the cysteine from the zinc ion upon the activation-peptide release activates the enzyme.,function:Degrades casein, gelatins of types I, III, IV, and V, and fibronectin. Activates procollagenase.,similarity:Belongs to the peptidase M10A family.,



Immunohistochemical analysis of paraffin-embedded human liver cancer. 1, Antibody was diluted at 1:200(4° overnight). 2, Tris-EDTA,pH9.0 was used for antigen retrieval. 3,Secondary antibody was diluted at 1:200(room temperature, 45min).

