

# MAMD1 rabbit pAb

Cat No.:ES15051

For research use only

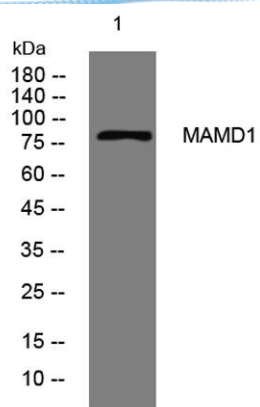
## Overview

Product Name	MAMD1 rabbit pAb
Host species	Rabbit
Applications	WB
Species Cross-Reactivity	Human; Mouse
Recommended dilutions	WB 1:500-2000
Immunogen	Synthesized peptide derived from human MAMD1 AA range: 189-239
Specificity	This antibody detects endogenous levels of MAMD1 at Human/Mouse
Formulation	Liquid in PBS containing 50% glycerol, 0.5% BSA and 0.02% sodium azide.
Storage	Store at -20°C. Avoid repeated freeze-thaw cycles.
Protein Name	MAMD1
Gene Name	MAMLD1 CG1 CXorf6
Cellular localization	Nucleus . Punctate nuclear localization.
Purification	The antibody was affinity-purified from rabbit antiserum by affinity-chromatography using epitope-specific immunogen.
Clonality	Polyclonal
Concentration	1 mg/ml
Observed band	85kD
Human Gene ID	10046
Human Swiss-Prot Number	Q13495
Alternative Names	Mastermind-like domain-containing protein 1 (F18) (Protein CG1)
Background	This gene encodes a mastermind-like domain containing protein. This protein may function as a transcriptional co-activator. Mutations in this gene are the cause of X-linked hypospadias type 2. Alternate splicing results in multiple transcript variants. [provided by RefSeq, Apr 2010],





**ELK Biotechnology**



Western blot analysis of lysates from AD293 cells, primary antibody was diluted at 1:1000, 4° over night



+86-27-59760950

ELKbio@ELKbiotech.com

[www.elkbiotech.com](http://www.elkbiotech.com)

23-2, No.388 Gaoxin 2nd Road, Wuhan East Lake Hi-tech Development Zone, Hubei, P.R.C.