

MTCH2 rabbit pAb

Cat No.:ES14686

For research use only

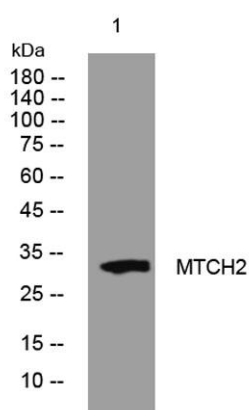
Overview

Product Name	MTCH2 rabbit pAb
Host species	Rabbit
Applications	WB
Species Cross-Reactivity	Human; Mouse
Recommended dilutions	WB 1: 500-2000
Immunogen	Synthesized peptide derived from human MTCH2 AA range: 59-109
Specificity	This antibody detects endogenous levels of MTCH2 at Human/Mouse
Formulation	Liquid in PBS containing 50% glycerol, 0.5% BSA and 0.02% sodium azide.
Storage	Store at -20°C. Avoid repeated freeze-thaw cycles.
Protein Name	MTCH2
Gene Name	MTCH2 MIMP HSPC032
Cellular localization	Mitochondrion outer membrane ; Multi-pass membrane protein .
Purification	The antibody was affinity-purified from rabbit antiserum by affinity-chromatography using epitope-specific immunogen.
Clonality	Polyclonal
Concentration	1 mg/ml
Observed band	
Human Gene ID	23788
Human Swiss-Prot Number	Q9Y6C9
Alternative Names	
Background	This gene encodes a member of the SLC25 family of nuclear-encoded transporters that are localized in the inner mitochondrial membrane. Members of this superfamily are involved in many metabolic pathways and cell functions. Genome-wide association studies in human have identified single-nucleotide polymorphisms in several loci associated with obesity. This gene is one such locus,





which is highly expressed in white adipose tissue and adipocytes, and thought to play a regulatory role in adipocyte differentiation and biology. Alternatively spliced transcript variants encoding different isoforms have been found for this gene. A recent study showed this gene to be an authentic stop codon readthrough target, and that its mRNA can give rise to an additional C-terminally extended isoform by use of an alternative in-frame translation termination codon. [provided by RefSeq, Nov 2015],



Western blot analysis of lysates from HeLa cells, primary antibody was diluted at 1:1000, 4° over night

