

RSPH3 rabbit pAb

Cat No.:ES13324

For research use only

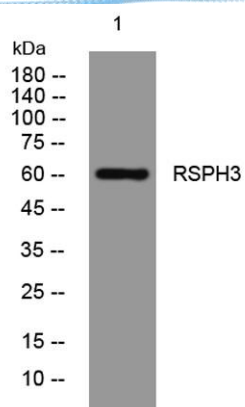
Overview

Product Name	RSPH3 rabbit pAb
Host species	Rabbit
Applications	WB
Species Cross-Reactivity	Human;Rat;Mouse;
Recommended dilutions	WB 1:500-2000
Immunogen	Synthesized peptide derived from human RSPH3 AA range: 15-65
Specificity	This antibody detects endogenous levels of RSPH3 at Human
Formulation	Liquid in PBS containing 50% glycerol, 0.5% BSA and 0.02% sodium azide.
Storage	Store at -20°C. Avoid repeated freeze-thaw cycles.
Protein Name	RSPH3
Gene Name	RSPH3 RSHL2 RSP3
Cellular localization	Cytoplasm, cytoskeleton, cilium axoneme . Cell projection, cilium .
Purification	The antibody was affinity-purified from rabbit antiserum by affinity-chromatography using epitope-specific immunogen.
Clonality	Polyclonal
Concentration	1 mg/ml
Observed band	60kD
Human Gene ID	83861
Human Swiss-Prot Number	Q86UC2
Alternative Names	Radial spoke head protein 3 homolog (Radial spoke head-like protein 2)
Background	





ELK Biotechnology



Western blot analysis of lysates from PC-12 cells, primary antibody was diluted at 1:1000, 4° over night



+86-27-59760950

ELKbio@ELKbiotech.com

www.elkbiotech.com

23-2, No.388 Gaoxin 2nd Road, Wuhan East Lake Hi-tech Development Zone, Hubei, P.R.C.