

F200A rabbit pAb

Cat No.:ES16605

For research use only

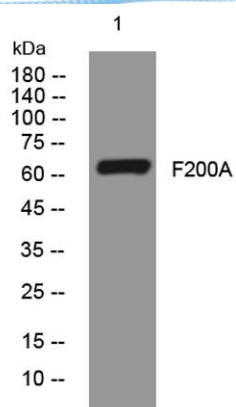
Overview

Product Name	F200A rabbit pAb
Host species	Rabbit
Applications	WB
Species Cross-Reactivity	Human;Rat;Mouse;
Recommended dilutions	WB 1: 500-2000
Immunogen	Synthesized peptide derived from human F200A AA range: 358-408
Specificity	This antibody detects endogenous levels of F200A at Human
Formulation	Liquid in PBS containing 50% glycerol, 0.5% BSA and 0.02% sodium azide.
Storage	Store at -20°C. Avoid repeated freeze-thaw cycles.
Protein Name	F200A
Gene Name	FAM200A C7orf38
Cellular localization	Membrane ; Single-pass membrane protein .
Purification	The antibody was affinity-purified from rabbit antiserum by affinity-chromatography using epitope-specific immunogen.
Clonality	Polyclonal
Concentration	1 mg/ml
Observed band	
Human Gene ID	221786
Human Swiss-Prot Number	Q8TCP9
Alternative Names	
Background	This gene encodes a protein of unknown function. The protein is weakly similar to transposase-like proteins in human and mouse. [provided by RefSeq, Jul 2008],





ELK Biotechnology



Western blot analysis of lysates from U2OS cells, primary antibody was diluted at 1:1000, 4° over night



+86-27-59760950

ELKbio@ELKbiotech.com

www.elkbiotech.com

23-2, No.388 Gaoxin 2nd Road, Wuhan East Lake Hi-tech Development Zone, Hubei, P.R.C.