

GMPPA rabbit pAb

Cat No.:ES16146

For research use only

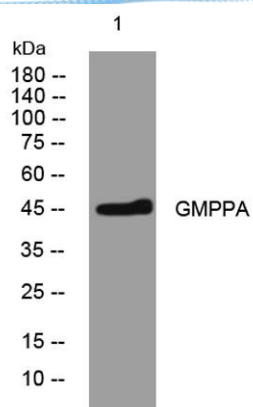
Overview

Product Name	GMPPA rabbit pAb
Host species	Rabbit
Applications	WB
Species Cross-Reactivity	Human; Mouse;Rat
Recommended dilutions	WB 1: 500-2000
Immunogen	Synthesized peptide derived from human GMPPA AA range: 184-234
Specificity	This antibody detects endogenous levels of GMPPA at Human/Mouse/Rat
Formulation	Liquid in PBS containing 50% glycerol, 0.5% BSA and 0.02% sodium azide.
Storage	Store at -20°C. Avoid repeated freeze-thaw cycles.
Protein Name	GMPPA
Gene Name	GMPPA
Cellular localization	Cytoplasm . Myc-tagged GMPPA shows a diffuse cytoplasmic and nuclear pattern in transfected COS-7 cells.
Purification	The antibody was affinity-purified from rabbit antiserum by affinity-chromatography using epitope-specific immunogen.
Clonality	Polyclonal
Concentration	1 mg/ml
Observed band	
Human Gene ID	29926
Human Swiss-Prot Number	Q96IJ6
Alternative Names	
Background	This gene is thought to encode a GDP-mannose pyrophosphorylase. This enzyme catalyzes the reaction which converts mannose-1-phosphate and GTP to GDP-mannose which is involved in the production of N-linked oligosaccharides. [provided by RefSeq, Jul 2008],





ELK Biotechnology



Western blot analysis of lysates from HpeG2 cells, primary antibody was diluted at 1:1000, 4° over night



+86-27-59760950

ELKbio@ELKbiotech.com

www.elkbiotech.com

23-2, No.388 Gaoxin 2nd Road, Wuhan East Lake Hi-tech Development Zone, Hubei, P.R.C.