

PACE1 rabbit pAb

Cat No.:ES14281

For research use only

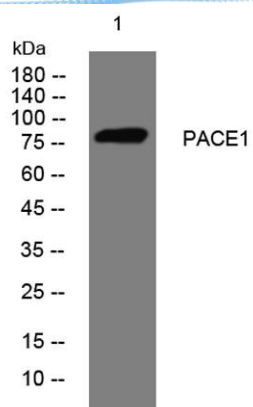
Overview

Product Name	PACE1 rabbit pAb
Host species	Rabbit
Applications	WB
Species Cross-Reactivity	Human; Mouse
Recommended dilutions	WB 1: 500-2000
Immunogen	Synthesized peptide derived from human PACE1 AA range: 519-569
Specificity	This antibody detects endogenous levels of PACE1 at Human/Mouse
Formulation	Liquid in PBS containing 50% glycerol, 0.5% BSA and 0.02% sodium azide.
Storage	Store at -20°C. Avoid repeated freeze-thaw cycles.
Protein Name	PACE1
Gene Name	SCYL3 PACE1
Cellular localization	Cytoplasm . Golgi apparatus . Cell projection, lamellipodium . Colocalized with EZR/VIL2, actin and CD44 in lamellipodia.
Purification	The antibody was affinity-purified from rabbit antiserum by affinity-chromatography using epitope-specific immunogen.
Clonality	Polyclonal
Concentration	1 mg/ml
Observed band	
Human Gene ID	57147
Human Swiss-Prot Number	Q8IZE3
Alternative Names	
Background	This gene encodes a protein with a kinase domain and four HEAT repeats. The encoded protein interacts with the C-terminal domain of ezrin, an ERM protein, and may play a role in cell adhesion and migration. Alternative splicing results in multiple transcript variants encoding multiple isoforms. [provided by RefSeq, Jun 2012],





ELK Biotechnology



Western blot analysis of lysates from SW480 cells, primary antibody was diluted at 1:1000, 4° over night



+86-27-59760950

ELKbio@ELKbiotech.com

www.elkbiotech.com

23-2, No.388 Gaoxin 2nd Road, Wuhan East Lake Hi-tech Development Zone, Hubei, P.R.C.