

# MOB1 (phospho-Thr35) rabbit pAb

Cat No.:ES14920

For research use only

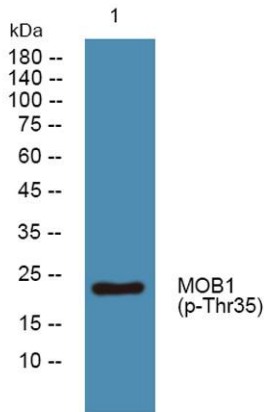
## Overview

Product Name	MOB1 (phospho-Thr35) rabbit pAb
Host species	Rabbit
Applications	WB;IHC
Species Cross-Reactivity	Human;Mouse;Rat
Recommended dilutions	WB 1:500-2000;IHC-p 1:50-300
Immunogen	Synthesized phospho peptide around human MOB1 (Thr35)
Specificity	This antibody detects endogenous levels of Human Mouse Rat MOB1 (phospho-Thr35)
Formulation	Liquid in PBS containing 50% glycerol, 0.5% BSA and 0.02% sodium azide.
Storage	Store at -20°C. Avoid repeated freeze-thaw cycles.
Protein Name	MOB1 (Thr35)
Gene Name	
Cellular localization	cytosol,extracellular exosome,
Purification	The antibody was affinity-purified from rabbit antiserum by affinity-chromatography using epitope-specific immunogen.
Clonality	Polyclonal
Concentration	1 mg/ml
Observed band	23kD
Human Gene ID	55233
Human Swiss-Prot Number	Q9H8S9
Alternative Names	MOB kinase activator 1A (Mob1 alpha) (Mob1A) (Mob1 homolog 1B) (Mps one binder kinase activator-like 1B)
Background	The protein encoded by this gene is a component of the Hippo signaling pathway, which controls organ size and tumor growth by enhancing apoptosis. Loss of the encoded protein results in cell proliferation and cancer formation. The encoded protein is also involved in the control of microtubule stability during cytokinesis. Several transcript variants



encoding different isoforms have been found for this gene. [provided by RefSeq, Nov 2015],

Western blot analysis of lysates from SW480 cells, primary antibody was diluted at 1:1000, 4° over night



Immunohistochemical analysis of paraffin-embedded human liver cancer. 1, Antibody was diluted at 1:200(4° overnight). 2, Tris-EDTA, pH9.0 was used for antigen retrieval. 3, Secondary antibody was diluted at 1:200(room temperature, 45min).

