

RAB3A rabbit pAb

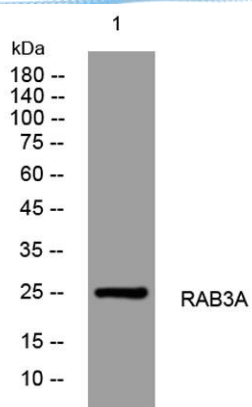
Cat No.:ES13821

For research use only

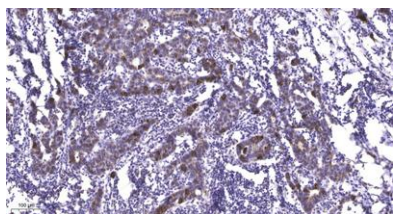
Overview

Product Name	RAB3A rabbit pAb
Host species	Rabbit
Applications	WB;ELISA;IHC
Species Cross-Reactivity	Human; Mouse;Rat
Recommended dilutions	WB 1:500-2000;IHC-p 1:50-300; ELISA 2000-20000
Immunogen	Synthesized peptide derived from human RAB3A AA range: 27-77
Specificity	This antibody detects endogenous levels of RAB3A at Human/Mouse/Rat
Formulation	Liquid in PBS containing 50% glycerol, 0.5% BSA and 0.02% sodium azide.
Storage	Store at -20°C. Avoid repeated freeze-thaw cycles.
Protein Name	RAB3A
Gene Name	RAB3A
Cellular localization	Cytoplasm, cytosol . Lysosome . Cytoplasmic vesicle, secretory vesicle . Cell projection, axon . Cell membrane ; Lipid-anchor ; Cytoplasmic side . Cell junction, synapse, presynapse . Cell junction, synapse, postsynapse . Cycles between a vesicle-associat
Purification	The antibody was affinity-purified from rabbit antiserum by affinity-chromatography using epitope-specific immunogen.
Clonality	Polyclonal
Concentration	1 mg/ml
Observed band	
Human Gene ID	5864
Human Swiss-Prot Number	P20336
Alternative Names	
Background	





Western blot analysis of lysates from HpeG2 cells, primary antibody was diluted at 1:1000, 4° over night



Immunohistochemical analysis of paraffin-embedded human Breast cancer. 1, Antibody was diluted at 1:200(4° overnight). 2, Tris-EDTA,pH9.0 was used for antigen retrieval. 3,Secondary antibody was diluted at 1:200(room temperature, 45min).

