

# MZT1 rabbit pAb

Cat No.:ES14579

For research use only

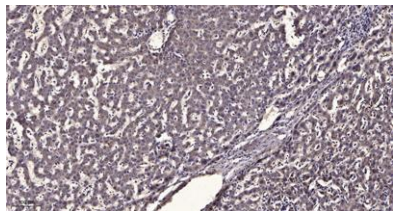
## Overview

Product Name	MZT1 rabbit pAb
Host species	Rabbit
Applications	IHC;IF
Species Cross-Reactivity	Human; Mouse
Recommended dilutions	IHC-p 1: 50-200
Immunogen	Synthesized peptide derived from human MZT1 AA range: 19-69
Specificity	This antibody detects endogenous levels of MZT1 at Human/Mouse
Formulation	Liquid in PBS containing 50% glycerol, 0.5% BSA and 0.02% sodium azide.
Storage	Store at -20°C. Avoid repeated freeze-thaw cycles.
Protein Name	MZT1
Gene Name	MZT1 C13orf37 MOZART1
Cellular localization	Cytoplasm, cytoskeleton, microtubule organizing center, centrosome . Cytoplasm, cytoskeleton, spindle .
Purification	The antibody was affinity-purified from rabbit antiserum by affinity-chromatography using epitope-specific immunogen.
Clonality	Polyclonal
Concentration	1 mg/ml
Observed band	
Human Gene ID	440145
Human Swiss-Prot Number	Q08AG7
Alternative Names	
Background	





**ELK Biotechnology**



Immunohistochemical analysis of paraffin-embedded human liver cancer. 1, Antibody was diluted at 1:200(4° overnight). 2, Tris-EDTA,pH9.0 was used for antigen retrieval. 3,Secondary antibody was diluted at 1:200(room temperature, 45min).



+86-27-59760950

[ELKbio@ELKbiotech.com](mailto:ELKbio@ELKbiotech.com)

[www.elkbiotech.com](http://www.elkbiotech.com)

23-2, No.388 Gaoxin 2nd Road,Wuhan East Lake Hi-tech Development Zone, Hubei , P.R.C