

# TMCC1 rabbit pAb

Cat No.:ES12642

For research use only

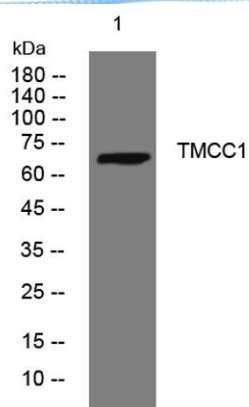
## Overview

Product Name	TMCC1 rabbit pAb
Host species	Rabbit
Applications	WB
Species Cross-Reactivity	Human; Mouse
Recommended dilutions	WB 1: 500-2000
Immunogen	Synthesized peptide derived from human TMCC1 AA range: 275-325
Specificity	This antibody detects endogenous levels of TMCC1 at Human/Mouse
Formulation	Liquid in PBS containing 50% glycerol, 0.5% BSA and 0.02% sodium azide.
Storage	Store at -20°C. Avoid repeated freeze-thaw cycles.
Protein Name	TMCC1
Gene Name	TMCC1 KIAA0779
Cellular localization	Endoplasmic reticulum membrane ; Multi-pass membrane protein . Specifically localizes to contact sites between the endoplasmic reticulum and endosomes that are spatially and temporally linked to endosome fission. .
Purification	The antibody was affinity-purified from rabbit antiserum by affinity-chromatography using epitope-specific immunogen.
Clonality	Polyclonal
Concentration	1 mg/ml
Observed band	
Human Gene ID	23023
Human Swiss-Prot Number	O94876
Alternative Names	
Background	





**ELK Biotechnology**



Western blot analysis of lysates from KB cells, primary antibody was diluted at 1:1000, 4° over night



+86-27-59760950

ELKbio@ELKbiotech.com

[www.elkbiotech.com](http://www.elkbiotech.com)

23-2, No.388 Gaoxin 2nd Road, Wuhan East Lake Hi-tech Development Zone, Hubei, P.R.C.