

XYLT1 rabbit pAb

Cat No.:ES12272

For research use only

Overview

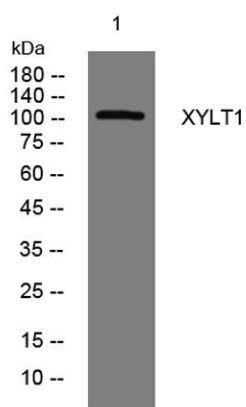
Product Name	XYLT1 rabbit pAb
Host species	Rabbit
Applications	WB
Species Cross-Reactivity	Human; Mouse;Rat
Recommended dilutions	WB 1:500-2000
Immunogen	Synthesized peptide derived from human XYLT1 AA range: 312-362
Specificity	This antibody detects endogenous levels of XYLT1 at Human/Mouse/Rat
Formulation	Liquid in PBS containing 50% glycerol, 0.5% BSA and 0.02% sodium azide.
Storage	Store at -20°C. Avoid repeated freeze-thaw cycles.
Protein Name	XYLT1
Gene Name	XYLT1 XT1
Cellular localization	Golgi apparatus membrane ; Single-pass type II membrane protein . Secreted . Detected predominantly in the Golgi apparatus. .
Purification	The antibody was affinity-purified from rabbit antiserum by affinity-chromatography using epitope-specific immunogen.
Clonality	Polyclonal
Concentration	1 mg/ml
Observed band	105kD
Human Gene ID	64131
Human Swiss-Prot Number	Q86Y38
Alternative Names	Xylosyltransferase 1 (EC 2.4.2.26) (Peptide O-xylosyltransferase 1) (Xylosyltransferase I) (XT-I) (XylT-I)
Background	This locus encodes a xylosyltransferase enzyme. The encoded protein catalyzes transfer of UDP-xylose to serine residues of an acceptor protein substrate. This transfer reaction is necessary for biosynthesis of glycosaminoglycan chains. Mutations in this gene





ELK Biotechnology

have been associated with increased severity of pseudoxanthoma elasticum.[provided by RefSeq, Nov 2009],



Western blot analysis of lysates from SW480 cells, primary antibody was diluted at 1:1000, 4°over night



+86-27-59760950

ELKbio@ELKbiotech.com

www.elkbiotech.com

23-2, No.388 Gaoxin 2nd Road,Wuhan East Lake Hi-tech Development Zone, Hubei , P.R.C