

HRSL1 rabbit pAb

Cat No.:ES15605

For research use only

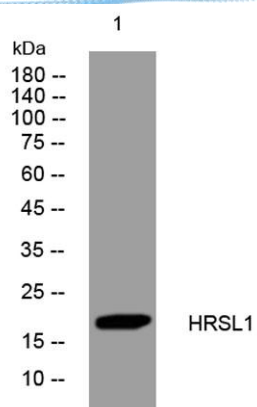
Overview

Product Name	HRSL1 rabbit pAb
Host species	Rabbit
Applications	WB
Species Cross-Reactivity	Human; Mouse
Recommended dilutions	WB 1: 500-2000
Immunogen	Synthesized peptide derived from human HRSL1 AA range: 50-100
Specificity	This antibody detects endogenous levels of HRSL1 at Human/Mouse
Formulation	Liquid in PBS containing 50% glycerol, 0.5% BSA and 0.02% sodium azide.
Storage	Store at -20°C. Avoid repeated freeze-thaw cycles.
Protein Name	HRSL1
Gene Name	HRASLS
Cellular localization	[Isoform 1]: Membrane ; Single-pass membrane protein . Cytoplasm .; [Isoform 2]: Nucleus . Cytoplasm .
Purification	The antibody was affinity-purified from rabbit antiserum by affinity-chromatography using epitope-specific immunogen.
Clonality	Polyclonal
Concentration	1 mg/ml
Observed band	
Human Gene ID	57110
Human Swiss-Prot Number	Q9HDD0
Alternative Names	
Background	





ELK Biotechnology



Western blot analysis of lysates from 293T cells, primary antibody was diluted at 1:1000, 4° over night



+86-27-59760950

ELKbio@ELKbiotech.com

www.elkbiotech.com

23-2, No.388 Gaoxin 2nd Road, Wuhan East Lake Hi-tech Development Zone, Hubei, P.R.C.