

MSH5 rabbit pAb

Cat No.:ES14702

For research use only

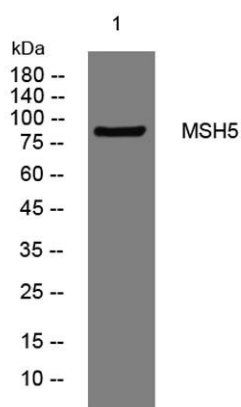
Overview

| | |
|--------------------------|---|
| Product Name | MSH5 rabbit pAb |
| Host species | Rabbit |
| Applications | WB;IHC |
| Species Cross-Reactivity | Human; Mouse;Rat |
| Recommended dilutions | WB 1:500-2000;IHC-p 1:50-300 |
| Immunogen | Synthesized peptide derived from human MSH5 AA range: 13-63 |
| Specificity | This antibody detects endogenous levels of MSH5 at Human/Mouse/Rat |
| Formulation | Liquid in PBS containing 50% glycerol, 0.5% BSA and 0.02% sodium azide. |
| Storage | Store at -20°C. Avoid repeated freeze-thaw cycles. |
| Protein Name | MSH5 |
| Gene Name | MSH5 |
| Cellular localization | synaptonemal complex,mismatch repair complex, |
| Purification | The antibody was affinity-purified from rabbit antiserum by affinity-chromatography using epitope-specific immunogen. |
| Clonality | Polyclonal |
| Concentration | 1 mg/ml |
| Observed band | |
| Human Gene ID | 4439 |
| Human Swiss-Prot Number | O43196 |
| Alternative Names | |
| Background | This gene encodes a member of the mutS family of proteins that are involved in DNA mismatch repair and meiotic recombination. This protein is similar to a Saccharomyces cerevisiae protein that participates in segregation fidelity and crossing-over events during meiosis. This protein plays a role in promoting ionizing radiation-induced apoptosis. This protein forms hetero-oligomers with another member of this family, mutS homolog 4. |

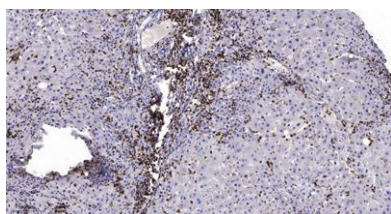




Polymorphisms in this gene have been linked to various human diseases, including IgA deficiency, common variable immunodeficiency, and premature ovarian failure. Alternative splicing results multiple transcript variants. Read-through transcription also exists between this gene and the downstream chromosome 6 open reading frame 26 (C6orf26) gene. [provided by RefSeq, Feb 2011],



Western blot analysis of lysates from 3T3 cells, primary antibody was diluted at 1:1000, 4° over night



Immunohistochemical analysis of paraffin-embedded human liver cancer. 1, Antibody was diluted at 1:200(4° overnight). 2, Tris-EDTA, pH9.0 was used for antigen retrieval. 3, Secondary antibody was diluted at 1:200(room temperature, 45min).

