

LRC48 rabbit pAb

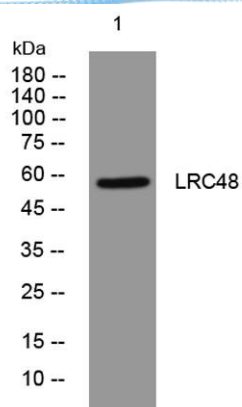
Cat No.:ES15118

For research use only

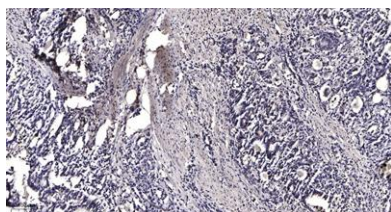
Overview

Product Name	LRC48 rabbit pAb
Host species	Rabbit
Applications	WB;IHC
Species Cross-Reactivity	Human; Mouse;Rat
Recommended dilutions	WB 1:500-2000;IHC-p 1:50-300
Immunogen	Synthesized peptide derived from human LRC48 AA range: 250-300
Specificity	This antibody detects endogenous levels of LRC48 at Human/Mouse/Rat
Formulation	Liquid in PBS containing 50% glycerol, 0.5% BSA and 0.02% sodium azide.
Storage	Store at -20°C. Avoid repeated freeze-thaw cycles.
Protein Name	LRC48
Gene Name	LRRC48
Cellular localization	Cytoplasm, cytoskeleton, cilium axoneme . Cell projection, cilium . Cytoplasm, cytoskeleton, flagellum axoneme . Cell projection, cilium, flagellum .
Purification	The antibody was affinity-purified from rabbit antiserum by affinity-chromatography using epitope-specific immunogen.
Clonality	Polyclonal
Concentration	1 mg/ml
Observed band	
Human Gene ID	83450
Human Swiss-Prot Number	Q9H069
Alternative Names	
Background	





Western blot analysis of lysates from HeLa cells, primary antibody was diluted at 1:1000, 4° over night



Immunohistochemical analysis of paraffin-embedded human Gastric adenocarcinoma. 1, Antibody was diluted at 1:200(4° overnight). 2, Tris-EDTA,pH9.0 was used for antigen retrieval. 3,Secondary antibody was diluted at 1:200(room temperature, 45min).

