

I-TAC rabbit pAb

Cat No.:ES20290

For research use only

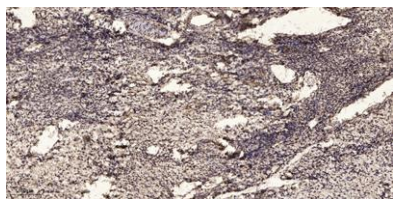
Overview

Product Name	I-TAC rabbit pAb
Host species	Rabbit
Applications	WB;IHC
Species Cross-Reactivity	Human;Rat;Mouse;
Recommended dilutions	WB 1:500-2000;IHC-p 1:50-300
Immunogen	Synthesized peptide derived from human I-TAC AA range: 45-94
Specificity	This antibody detects endogenous levels of Human I-TAC
Formulation	Liquid in PBS containing 50% glycerol, 0.5% BSA and 0.02% sodium azide.
Storage	Store at -20°C. Avoid repeated freeze-thaw cycles.
Protein Name	I-TAC
Gene Name	CXCL11 ITAC SCYB11 SCYB9B
Cellular localization	Secreted.
Purification	The antibody was affinity-purified from rabbit antiserum by affinity-chromatography using epitope-specific immunogen.
Clonality	Polyclonal
Concentration	1 mg/ml
Observed band	
Human Gene ID	6373
Human Swiss-Prot Number	O14625
Alternative Names	C-X-C motif chemokine 11 (Beta-R1;H174;Interferon gamma-inducible protein 9;IP-9;Interferon-inducible T-cell alpha chemoattractant;I-TAC;Small-inducible cytokine B11)
Background	disease:Expressed in a variety of skin disorders, including allergic contact dermatitis, lichen planus and mycosis fungoides.,function:Chemotactic for interleukin-activated T-cells but not unstimulated T-cells, neutrophils or monocytes. Induces calcium release in activated T-cells. Binds to CXCR3. May





play an important role in CNS diseases which involve T-cell recruitment. May play a role in skin immune responses.,induction:By interferon gamma and interferon beta. Induction by IFN-gamma is enhanced by TNF-alpha in monocytes, dermal fibroblasts and endothelial cells, and by IL-1 in astrocytes.,mass spectrometry: PubMed:10233762,online information:CXCL11 entry,similarity:Belongs to the intercrine alpha (chemokine CxC) family.,tissue specificity:High levels in peripheral blood leukocytes, pancreas and liver astrocytes. Moderate levels in thymus, spleen and lung. Low levels in placenta, prostate and small intestine. Also found in epidermal basal layer keratinocytes in skin disorders.,



Immunohistochemical analysis of paraffin-embedded human oophoroma. 1, Antibody was diluted at 1:200(4° overnight). 2, Tris-EDTA,pH9.0 was used for antigen retrieval. 3,Secondary antibody was diluted at 1:200(room temperature, 45min).

