

KDIS rabbit pAb

Cat No.:ES15338

For research use only

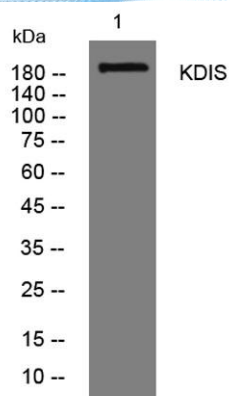
Overview

Product Name	KDIS rabbit pAb
Host species	Rabbit
Applications	WB
Species Cross-Reactivity	Human;Rat
Recommended dilutions	WB 1: 500-2000
Immunogen	Synthesized peptide derived from human KDIS AA range: 1023-1073
Specificity	This antibody detects endogenous levels of KDIS at Human/Rat
Formulation	Liquid in PBS containing 50% glycerol, 0.5% BSA and 0.02% sodium azide.
Storage	Store at -20°C. Avoid repeated freeze-thaw cycles.
Protein Name	KDIS
Gene Name	KIDINS220 ARMS KIAA1250
Cellular localization	Membrane ; Multi-pass membrane protein . Late endosome . Localized at late endosome before or after nerve growth factor (NGF) stimulation.
Purification	The antibody was affinity-purified from rabbit antiserum by affinity-chromatography using epitope-specific immunogen.
Clonality	Polyclonal
Concentration	1 mg/ml
Observed band	
Human Gene ID	57498
Human Swiss-Prot Number	Q9ULH0
Alternative Names	
Background	





ELK Biotechnology



Western blot analysis of lysates from 3T3 cells, primary antibody was diluted at 1:1000, 4° over night



+86-27-59760950

ELKbio@ELKbiotech.com

www.elkbiotech.com

23-2, No.388 Gaoxin 2nd Road, Wuhan East Lake Hi-tech Development Zone, Hubei, P.R.C.