

# EYFP rabbit pAb

Cat No.:ES20756

For research use only

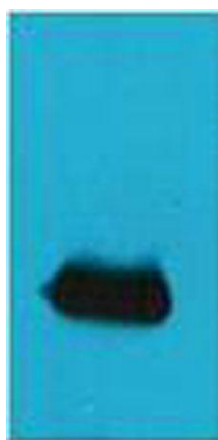
## Overview

Product Name	EYFP rabbit pAb
Host species	Rabbit
Applications	WB
Species Cross-Reactivity	Species independent
Recommended dilutions	WB: 1:3000-5000
Immunogen	Recombinant Protein of EYFP
Specificity	The antibody detects EYFP and YFP tag fusion proteins.
Formulation	Liquid in PBS containing 50% glycerol, 0.5% BSA and 0.02% sodium azide.
Storage	Store at -20°C. Avoid repeated freeze-thaw cycles.
Protein Name	
Gene Name	
Cellular localization	
Purification	The antibody was affinity-purified from rabbit antiserum by affinity-chromatography using epitope-specific immunogen.
Clonality	Polyclonal
Concentration	
Observed band	
Human Gene ID	
Human Swiss-Prot Number	
Alternative Names	YM3229
Background	Enhanced Yellow fluorescent protein. Yellow Fluorescent Protein (YFP) is a genetic mutant of green fluorescent protein, derived from <i>Aequorea victoria</i> . Its excitation peak is 514nm and its emission peak is 527nm. Like green fluorescent protein (GFP), it is a useful tool in cell and molecular biology, usually explored using fluorescence microscopy. Three improved versions of YFP are Citrine, Venus, and Ypet. They have reduced chloride sensitivity, faster maturation, and increased





brightness (product of the extinction coefficient and quantum yield). Typically, yellow FPs serve as the acceptor for genetically-encoded FRET sensors of which the most likely donor FP is mCFP (monomeric cyan FP). The red-shift relative to GFP is caused by a Pi-Pi stacking interaction as a result of the T203Y mutation, which essentially increases the polarizability of the local chromophore environment as well as providing additional electron density into the chromophore.



Western blot analysis of EYFP recombinant protein, diluted at 1:5000. Secondary antibody(catalog#:RS0002) was diluted at 1:20000

