

KI18A rabbit pAb

Cat No.:ES15323

For research use only

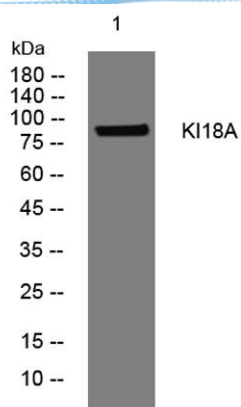
Overview

Product Name	KI18A rabbit pAb
Host species	Rabbit
Applications	WB;ELISA;IHC
Species Cross-Reactivity	Human; Mouse
Recommended dilutions	WB 1:500-2000;IHC-p 1:50-300; ELISA 2000-20000
Immunogen	Synthesized peptide derived from human KI18A AA range: 713-763
Specificity	This antibody detects endogenous levels of KI18A at Human/Mouse
Formulation	Liquid in PBS containing 50% glycerol, 0.5% BSA and 0.02% sodium azide.
Storage	Store at -20°C. Avoid repeated freeze-thaw cycles.
Protein Name	KI18A
Gene Name	KIF18A OK/SW-cl.108
Cellular localization	Cell projection, ruffle. Cytoplasm. Nucleus. Cytoplasm, cytoskeleton, microtubule organizing center, centrosome.
Purification	The antibody was affinity-purified from rabbit antiserum by affinity-chromatography using epitope-specific immunogen.
Clonality	Polyclonal
Concentration	1 mg/ml
Observed band	
Human Gene ID	81930
Human Swiss-Prot Number	Q8NI77
Alternative Names	
Background	KIF18A is a member of the kinesin superfamily of microtubule-associated molecular motors (see MIM 148760) that use hydrolysis of ATP to produce force and movement along microtubules (Luboshits and Benayahu, 2005 [PubMed 15878648]).[supplied by OMIM, Aug 2008],

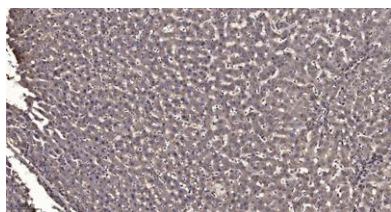




ELK Biotechnology



Western blot analysis of lysates from VEC cells, primary antibody was diluted at 1:1000, 4° over night



Immunohistochemical analysis of paraffin-embedded human liver cancer. 1, Antibody was diluted at 1:200(4° overnight). 2, Tris-EDTA, pH9.0 was used for antigen retrieval. 3, Secondary antibody was diluted at 1:200(room temperature, 45min).



+86-27-59760950

ELKbio@ELKbiotech.com

www.elkbiotech.com

23-2, No.388 Gaoxin 2nd Road, Wuhan East Lake Hi-tech Development Zone, Hubei, P.R.C.