

# NRAM2 rabbit pAb

Cat No.:ES14450

For research use only

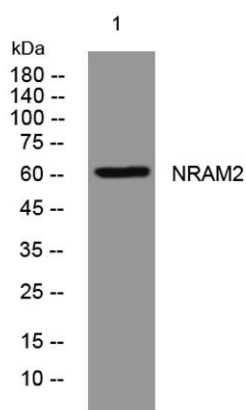
## Overview

Product Name	NRAM2 rabbit pAb
Host species	Rabbit
Applications	WB
Species Cross-Reactivity	Human; Mouse;Rat
Recommended dilutions	WB 1:500-2000
Immunogen	Synthesized peptide derived from human NRAM2 AA range: 474-524
Specificity	This antibody detects endogenous levels of NRAM2 at Human/Mouse/Rat
Formulation	Liquid in PBS containing 50% glycerol, 0.5% BSA and 0.02% sodium azide.
Storage	Store at -20°C. Avoid repeated freeze-thaw cycles.
Protein Name	NRAM2
Gene Name	SLC11A2 DCT1 DMT1 NRAMP2 OK/SW-cl.20
Cellular localization	[Isoform 2]: Cell membrane ; Multi-pass membrane protein . Early endosome .; Endosome membrane ; Multi-pass membrane protein . Mitochondrion outer membrane ; Multi-pass membrane protein. Cell membrane ; Multi-pass membrane protein . Also found in extracel
Purification	The antibody was affinity-purified from rabbit antiserum by affinity-chromatography using epitope-specific immunogen.
Clonality	Polyclonal
Concentration	1 mg/ml
Observed band	60kD
Human Gene ID	4891
Human Swiss-Prot Number	P49281
Alternative Names	Natural resistance-associated macrophage protein 2 (NRAMP 2) (Divalent cation transporter 1) (Divalent metal transporter 1) (DMT-1)
Background	This gene encodes a member of the solute carrier family 11 protein family. The product of this gene





transports divalent metals and is involved in iron absorption. Mutations in this gene are associated with hypochromic microcytic anemia with iron overload. A related solute carrier family 11 protein gene is located on chromosome 2. Multiple transcript variants encoding different isoforms have been found for this gene.[provided by RefSeq, Apr 2010],



Western blot analysis of lysates from A431 cells, primary antibody was diluted at 1:1000, 4° over night

