

# SNF8 rabbit pAb

Cat No.:ES13038

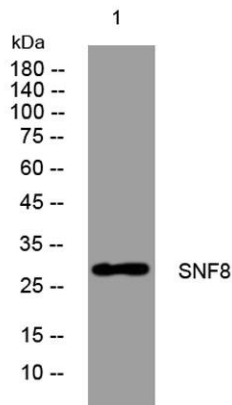
For research use only

## Overview

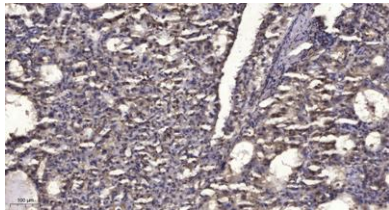
Product Name	SNF8 rabbit pAb
Host species	Rabbit
Applications	WB;IHC
Species Cross-Reactivity	Human; Mouse;Rat
Recommended dilutions	WB 1:500-2000;IHC-p 1:50-300
Immunogen	Synthesized peptide derived from human SNF8 AA range: 78-128
Specificity	This antibody detects endogenous levels of SNF8 at Human/Mouse/Rat
Formulation	Liquid in PBS containing 50% glycerol, 0.5% BSA and 0.02% sodium azide.
Storage	Store at -20°C. Avoid repeated freeze-thaw cycles.
Protein Name	SNF8
Gene Name	SNF8 EAP30
Cellular localization	Cytoplasm. Endosome membrane. Nucleus . Late endosome membrane. Recruited to the endosome membrane to participate in vesicle formation.
Purification	The antibody was affinity-purified from rabbit antiserum by affinity-chromatography using epitope-specific immunogen.
Clonality	Polyclonal
Concentration	1 mg/ml
Observed band	
Human Gene ID	11267
Human Swiss-Prot Number	Q96H20
Alternative Names	
Background	The protein encoded by this gene is a component of the endosomal sorting complex required for transport II (ESCRT-II), which regulates the movement of ubiquitinated transmembrane proteins to the lysosome for degradation. This complex also interacts with the RNA polymerase II elongation factor (ELL) to overcome the repressive



effects of ELL on RNA polymerase II activity. Several transcript variants encoding different isoforms have been found for this gene. [provided by RefSeq, Nov 2015],



Western blot analysis of lysates from HpeG2 cells, primary antibody was diluted at 1:1000, 4° over night



Immunohistochemical analysis of paraffin-embedded human liver cancer. 1, Antibody was diluted at 1:200(4° overnight). 2, Tris-EDTA, pH9.0 was used for antigen retrieval. 3, Secondary antibody was diluted at 1:200(room temperature, 45min).

