

# WFKN2 rabbit pAb

Cat No.:ES12305

For research use only

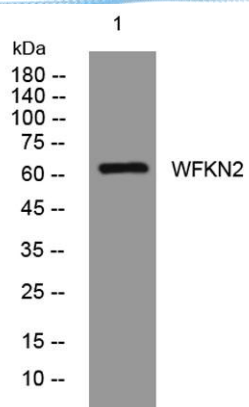
## Overview

Product Name	WFKN2 rabbit pAb
Host species	Rabbit
Applications	WB
Species Cross-Reactivity	Human; Mouse
Recommended dilutions	WB 1: 500-2000
Immunogen	Synthesized peptide derived from human WFKN2 AA range: 506-556
Specificity	This antibody detects endogenous levels of WFKN2 at Human/Mouse
Formulation	Liquid in PBS containing 50% glycerol, 0.5% BSA and 0.02% sodium azide.
Storage	Store at -20°C. Avoid repeated freeze-thaw cycles.
Protein Name	WFKN2
Gene Name	WFIKKN2 GASP1 WFIKKNRP UNQ9235/PRO31996
Cellular localization	Secreted .
Purification	The antibody was affinity-purified from rabbit antiserum by affinity-chromatography using epitope-specific immunogen.
Clonality	Polyclonal
Concentration	1 mg/ml
Observed band	
Human Gene ID	124857
Human Swiss-Prot Number	Q8TEU8
Alternative Names	
Background	The WFIKKN1 protein contains a WAP domain, follistatin domain, immunoglobulin domain, two tandem Kunitz domains, and an NTR domain. This gene encodes a WFIKKN1-related protein which has the same domain organization as the WFIKKN1 protein. The WAP-type, follistatin type, Kunitz-type, and NTR-type protease inhibitory domains may control the action of multiple types of proteases. [provided by RefSeq, Jul 2008],





**ELK Biotechnology**



Western blot analysis of lysates from HeLa cells, primary antibody was diluted at 1:1000, 4° over night



+86-27-59760950

ELKbio@ELKbiotech.com

[www.elkbiotech.com](http://www.elkbiotech.com)

23-2, No.388 Gaoxin 2nd Road, Wuhan East Lake Hi-tech Development Zone, Hubei, P.R.C.