

S29A4 rabbit pAb

Cat No.:ES13245

For research use only

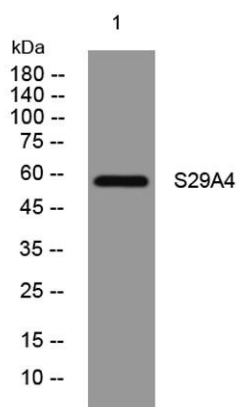
Overview

Product Name	S29A4 rabbit pAb
Host species	Rabbit
Applications	WB
Species Cross-Reactivity	Human; Mouse
Recommended dilutions	WB 1: 500-2000
Immunogen	Synthesized peptide derived from human S29A4 AA range: 404-454
Specificity	This antibody detects endogenous levels of S29A4 at Human/Mouse
Formulation	Liquid in PBS containing 50% glycerol, 0.5% BSA and 0.02% sodium azide.
Storage	Store at -20°C. Avoid repeated freeze-thaw cycles.
Protein Name	S29A4
Gene Name	SLC29A4 ENT4 PMAT PSEC0113
Cellular localization	Cell membrane ; Multi-pass membrane protein . Apical cell membrane ; Multi-pass membrane protein . Located to the plasma membranes of ventricular myocytes and vascular endothelial cells. Targeted to the apical membranes of differentiated kidney epithelial
Purification	The antibody was affinity-purified from rabbit antiserum by affinity-chromatography using epitope-specific immunogen.
Clonality	Polyclonal
Concentration	1 mg/ml
Observed band	
Human Gene ID	222962
Human Swiss-Prot Number	Q7RTT9
Alternative Names	
Background	This gene encodes a member of the SLC29A/ENT transporter protein family. The encoded membrane protein catalyzes the reuptake of monoamines into presynaptic neurons, thus determining the intensity





and duration of monoamine neural signaling. It has been shown to transport several compounds, including serotonin, dopamine, and the neurotoxin 1-methyl-4-phenylpyridinium. Alternative splicing results in multiple transcript variants. [provided by RefSeq, Jul 2014],



Western blot analysis of lysates from MCF-7 cells, primary antibody was diluted at 1:1000, 4° over night

