

# IF122 rabbit pAb

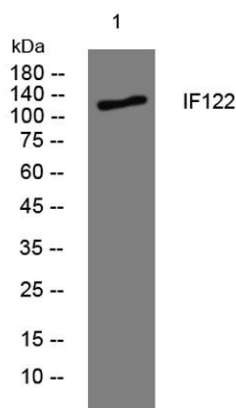
Cat No.:ES15533

For research use only

## Overview

Product Name	IF122 rabbit pAb
Host species	Rabbit
Applications	WB
Species Cross-Reactivity	Human; Mouse
Recommended dilutions	WB 1: 500-2000
Immunogen	Synthesized peptide derived from human IF122 AA range: 956-1006
Specificity	This antibody detects endogenous levels of IF122 at Human/Mouse
Formulation	Liquid in PBS containing 50% glycerol, 0.5% BSA and 0.02% sodium azide.
Storage	Store at -20°C. Avoid repeated freeze-thaw cycles.
Protein Name	IF122
Gene Name	IFT122 SPG WDR10 WDR140
Cellular localization	Cell projection, cilium . Cytoplasm, cytoskeleton, cilium basal body . Localizes to photoreceptor connecting cilia. .
Purification	The antibody was affinity-purified from rabbit antiserum by affinity-chromatography using epitope-specific immunogen.
Clonality	Polyclonal
Concentration	1 mg/ml
Observed band	
Human Gene ID	55764
Human Swiss-Prot Number	Q9HBG6
Alternative Names	
Background	This gene encodes a member of the WD repeat protein family. WD repeats are minimally conserved regions of approximately 40 amino acids typically bracketed by gly-his and trp-aspartic acid (GH-WD), which may facilitate formation of heterotrimeric or multiprotein complexes. Members of this family are involved in a variety of cellular processes, including

cell cycle progression, signal transduction, apoptosis, and gene regulation. This cytoplasmic protein contains seven WD repeats and an AF-2 domain which function by recruiting coregulatory molecules and in transcriptional activation. Mutations in this gene cause cranioectodermal dysplasia-1. A related pseudogene is located on chromosome 3. Alternative splicing results in multiple transcript variants encoding different isoforms. [provided by RefSeq, Jul 2013],



Western blot analysis of lysates from MCF-7 cells, primary antibody was diluted at 1:1000, 4°over night