

# TMPS2 rabbit pAb

Cat No.:ES12631

For research use only

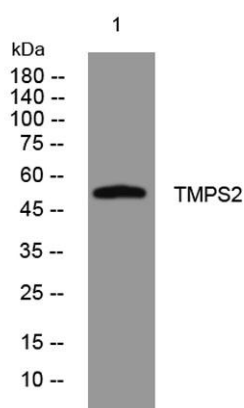
## Overview

Product Name	TMPS2 rabbit pAb
Host species	Rabbit
Applications	WB
Species Cross-Reactivity	Human; Mouse
Recommended dilutions	WB 1: 500-2000
Immunogen	Synthesized peptide derived from human TMPS2 AA range: 98-148
Specificity	This antibody detects endogenous levels of TMPS2 at Human/Mouse
Formulation	Liquid in PBS containing 50% glycerol, 0.5% BSA and 0.02% sodium azide.
Storage	Store at -20°C. Avoid repeated freeze-thaw cycles.
Protein Name	TMPS2
Gene Name	TMPRSS2 PRSS10
Cellular localization	Cell membrane ; Single-pass type II membrane protein .; [Transmembrane protease serine 2 catalytic chain]: Secreted . Activated by cleavage and secreted. .
Purification	The antibody was affinity-purified from rabbit antiserum by affinity-chromatography using epitope-specific immunogen.
Clonality	Polyclonal
Concentration	1 mg/ml
Observed band	
Human Gene ID	7113
Human Swiss-Prot Number	O15393
Alternative Names	
Background	This gene encodes a protein that belongs to the serine protease family. The encoded protein contains a type II transmembrane domain, a receptor class A domain, a scavenger receptor cysteine-rich domain and a protease domain. Serine proteases are known to be involved in many





physiological and pathological processes. This gene was demonstrated to be up-regulated by androgenic hormones in prostate cancer cells and down-regulated in androgen-independent prostate cancer tissue. The protease domain of this protein is thought to be cleaved and secreted into cell media after autocleavage. Alternatively spliced transcript variants encoding different isoforms have been found for this gene. [provided by RefSeq, Sep 2008],



Western blot analysis of lysates from THP-1 cells, primary antibody was diluted at 1:1000, 4° over night

