

MOSC1 rabbit pAb

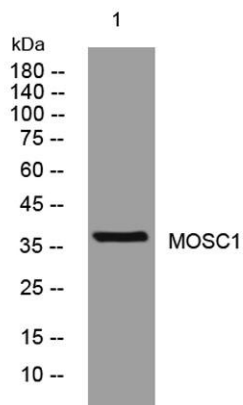
Cat No.:ES14884

For research use only

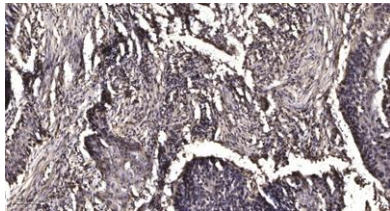
Overview

Product Name	MOSC1 rabbit pAb
Host species	Rabbit
Applications	WB;ELISA;IHC
Species Cross-Reactivity	Human; Mouse
Recommended dilutions	WB 1:500-2000;IHC-p 1:50-300; ELISA 2000-20000
Immunogen	Synthesized peptide derived from human MOSC1 AA range: 156-206
Specificity	This antibody detects endogenous levels of MOSC1 at Human/Mouse
Formulation	Liquid in PBS containing 50% glycerol, 0.5% BSA and 0.02% sodium azide.
Storage	Store at -20°C. Avoid repeated freeze-thaw cycles.
Protein Name	MOSC1
Gene Name	MARC1 MOSC1
Cellular localization	Mitochondrion outer membrane ; Single-pass type II membrane protein . Membrane ; Lipid-anchor . Mitochondrial import is mediated by AA 1-40 and requires ATP.
Purification	The antibody was affinity-purified from rabbit antiserum by affinity-chromatography using epitope-specific immunogen.
Clonality	Polyclonal
Concentration	1 mg/ml
Observed band	
Human Gene ID	64757
Human Swiss-Prot Number	Q5VT66
Alternative Names	
Background	





Western blot analysis of lysates from 3T3 cells, primary antibody was diluted at 1:1000, 4° over night



Immunohistochemical analysis of paraffin-embedded human Squamous cell carcinoma of lung. 1, Antibody was diluted at 1:200(4° overnight). 2, Tris-EDTA,pH9.0 was used for antigen retrieval. 3,Secondary antibody was diluted at 1:200(room temperature, 45min).

