

DHE3 rabbit pAb

Cat No.:ES16951

For research use only

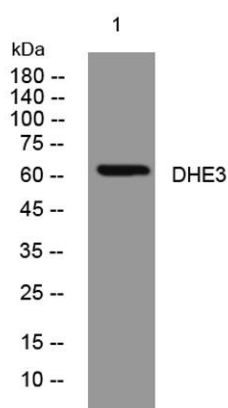
Overview

Product Name	DHE3 rabbit pAb
Host species	Rabbit
Applications	WB
Species Cross-Reactivity	Human; Mouse;Rat
Recommended dilutions	WB 1: 500-2000
Immunogen	Synthesized peptide derived from human DHE3
Specificity	This antibody detects endogenous levels of DHE3 at Human/Mouse/Rat
Formulation	Liquid in PBS containing 50% glycerol, 0.5% BSA and 0.02% sodium azide.
Storage	Store at -20°C. Avoid repeated freeze-thaw cycles.
Protein Name	DHE3
Gene Name	GLUD1 GLUD
Cellular localization	Mitochondrion . Endoplasmic reticulum . Mostly translocates into the mitochondria, only a small amount of the protein localizes to the endoplasmic reticulum. .
Purification	The antibody was affinity-purified from rabbit antiserum by affinity-chromatography using epitope-specific immunogen.
Clonality	Polyclonal
Concentration	1 mg/ml
Observed band	
Human Gene ID	2746
Human Swiss-Prot Number	P00367
Alternative Names	
Background	This gene encodes glutamate dehydrogenase, which is a mitochondrial matrix enzyme that catalyzes the oxidative deamination of glutamate to alpha-ketoglutarate and ammonia. This enzyme has an important role in regulating amino acid-induced insulin secretion. It is allosterically activated by ADP and inhibited by GTP and ATP. Activating mutations





in this gene are a common cause of congenital hyperinsulinism. Alternative splicing of this gene results in multiple transcript variants. The related glutamate dehydrogenase 2 gene on the human X-chromosome originated from this gene via retrotransposition and encodes a soluble form of glutamate dehydrogenase. Related pseudogenes have been identified on chromosomes 10, 18 and X. [provided by RefSeq, Jan 2016],



Western blot analysis of lysates from MDA-MB cells, primary antibody was diluted at 1:1000, 4° over night

