

# SIAT6 rabbit pAb

Cat No.:ES20440

For research use only

## Overview

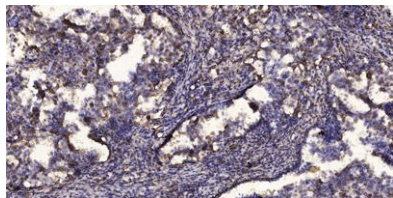
Product Name	SIAT6 rabbit pAb
Host species	Rabbit
Applications	WB;ELISA;IHC
Species Cross-Reactivity	Human;Mouse;Rat
Recommended dilutions	WB 1:500-2000;IHC-p 1:50-300; ELISA 2000-20000
Immunogen	Synthesized peptide derived from human SIAT6
Specificity	This antibody detects endogenous levels of Human,Mouse,Rat SIAT6
Formulation	Liquid in PBS containing 50% glycerol, 0.5% BSA and 0.02% sodium azide.
Storage	Store at -20°C. Avoid repeated freeze-thaw cycles.
Protein Name	SIAT6
Gene Name	ST3GAL3 SIAT6
Cellular localization	Golgi apparatus, Golgi stack membrane; Single-pass type II membrane protein. Secreted. Membrane-bound form in trans cisternae of Golgi. Secreted into the body fluid.
Purification	The antibody was affinity-purified from rabbit antiserum by affinity-chromatography using epitope-specific immunogen.
Clonality	Polyclonal
Concentration	1 mg/ml
Observed band	
Human Gene ID	6487
Human Swiss-Prot Number	Q11203
Alternative Names	CMP-N-acetylneuraminate-beta-1,4-galactoside alpha-2,3-sialyltransferase (EC 2.4.99.6;Beta-galactoside alpha-2,3-sialyltransferase 3;Alpha 2,3-ST 3;Gal beta-1,3(4) GlcNAc alpha-2,3 sialyltransferase;N-acetylglucosaminide alpha-2,3-sialyltransferase;ST3Gal

## Background





**ELK Biotechnology**



Immunohistochemical analysis of paraffin-embedded human Squamous cell carcinoma of lung. 1, Antibody was diluted at 1:200(4° overnight). 2, Tris-EDTA,pH9.0 was used for antigen retrieval. 3,Secondary antibody was diluted at 1:200(room temperature, 45min).



+86-27-59760950

[ELKbio@ELKbiotech.com](mailto:ELKbio@ELKbiotech.com)

[www.elkbiotech.com](http://www.elkbiotech.com)

23-2, No.388 Gaoxin 2nd Road,Wuhan East Lake Hi-tech Development Zone, Hubei , P.R.C