



## PRB2 rabbit pAb

Cat No.:ES13967

For research use only

### Overview

Product Name	PRB2 rabbit pAb
Host species	Rabbit
Applications	WB
Species Cross-Reactivity	Human;Rat;Mouse;
Recommended dilutions	WB 1: 500-2000
Immunogen	Synthesized peptide derived from human PRB2 AA range: 241-291
Specificity	This antibody detects endogenous levels of PRB2 at Human
Formulation	Liquid in PBS containing 50% glycerol, 0.5% BSA and 0.02% sodium azide.
Storage	Store at -20°C. Avoid repeated freeze-thaw cycles.
Protein Name	PRB2
Gene Name	PRB2
Cellular localization	Secreted .
Purification	The antibody was affinity-purified from rabbit antiserum by affinity-chromatography using epitope-specific immunogen.
Clonality	Polyclonal
Concentration	1 mg/ml
Observed band	
Human Gene ID	
Human Swiss-Prot Number	P02812
Alternative Names	
Background	This gene encodes a member of the heterogeneous family of basic, proline-rich, human salivary glycoproteins. The encoded preproprotein undergoes proteolytic processing to generate one or more mature isoforms before secretion from the parotid glands. Multiple alleles of this gene exhibiting variations in the length of the tandem repeats, polymorphic cleavage sites and polymorphic stop codons have been identified. This

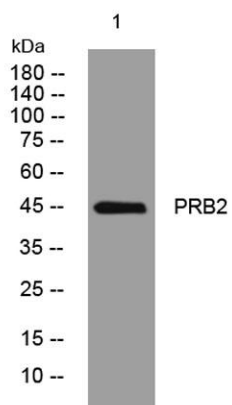




**ELK Biotechnology**

gene is located in a cluster of closely related salivary proline-rich proteins on chromosome 12. [provided by RefSeq, Oct 2015],

Western blot analysis of lysates from MDA-MB cells, primary antibody was diluted at 1:1000, 4°over night



+86-27-59760950

ELKbio@ELKbiotech.com

[www.elkbiotech.com](http://www.elkbiotech.com)

23-2, No.388 Gaoxin 2nd Road,Wuhan East Lake Hi-tech Development Zone, Hubei , P.R.C